

Datasheet for ABIN7043149

**anti-GPR17 antibody (Intracellular, Loop 3)****2** Images[Go to Product page](#)

## Overview

Quantity:	50 µL
Target:	GPR17
Binding Specificity:	AA 220-232, Intracellular, Loop 3
Reactivity:	Mouse, Rat
Host:	Rabbit
Clonality:	Polyclonal
Conjugate:	This GPR17 antibody is un-conjugated
Application:	Western Blotting (WB), Immunohistochemistry (IHC), Immunofluorescence (IF)

## Product Details

Immunogen:	Immunogen: Synthetic peptide Immunogen Sequence: (C)RQGPRIEKHLKNK, corresponding to amino acid residues 220-232 of rat GPR17
Isotype:	IgG
Cross-Reactivity (Details):	Not recommended for human samples.
Characteristics:	Anti-GPR17 Antibody (ABIN7043149, ABIN7044435 and ABIN7044436)) is a highly specific antibody directed against an epitope of the rat protein. The antibody can be used in western blot and immunohistochemistry applications. It has been designed to recognize GPR17 from rat and mouse samples. It is unlikely to recognize the protein from human samples.
Purification:	Affinity purified on immobilized antigen.

## Target Details

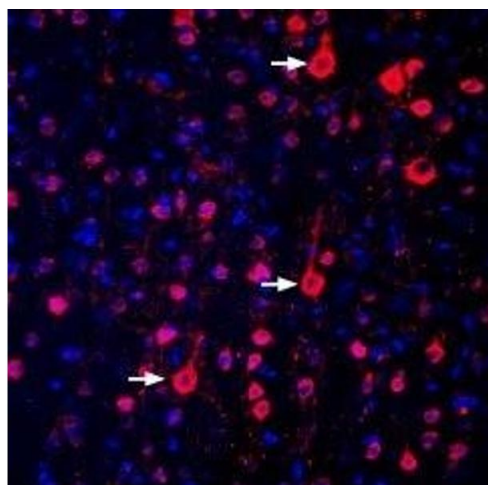
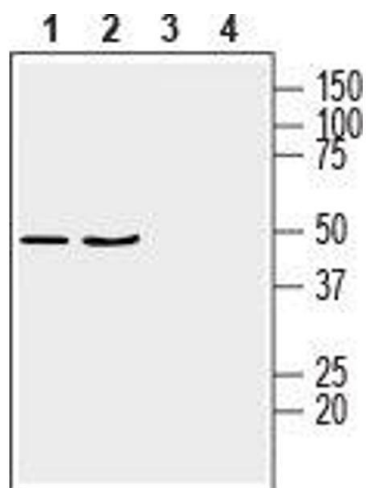
Target:	GPR17
Alternative Name:	GPR17 ( <a href="#">GPR17 Products</a> )
Background:	Alternative names: GPR17, G-protein coupled receptor 17, Uracil nucleotide/cysteinyl leukotriene receptor, UDP/CysLT Receptor, P2Y-like receptor
Gene ID:	767613
NCBI Accession:	<a href="#">NM_001161415</a>
UniProt:	<a href="#">Q09QM4</a>

## Application Details

Application Notes:	Optimal working dilution should be determined by the investigator.
Restrictions:	For Research Use only

## Handling

Format:	Lyophilized
Reconstitution:	25 µL, 50 µL or 0.2 mL double distilled water (DDW), depending on the sample size.
Concentration:	0.8 mg/mL
Buffer:	Reconstituted antibody contains phosphate buffered saline (PBS), pH 7.4, 1 % BSA, 0.05 % Sodium azide.
Preservative:	Sodium azide
Precaution of Use:	This product contains Sodium azide: a POISONOUS AND HAZARDOUS SUBSTANCE which should be handled by trained staff only.
Storage:	RT, 4 °C, -20 °C
Storage Comment:	<p>Storage before reconstitution: The antibody ships as a lyophilized powder at room temperature. Upon arrival, it should be stored at -20°C.</p> <p>Storage after reconstitution: The reconstituted solution can be stored at 4°C for up to 1 week. For longer periods, small aliquots should be stored at -20°C. Avoid multiple freezing and thawing. Centrifuge all antibody preparations before use (10000 x g 5 min).</p>



### Western Blotting

**Image 1.** Western blot analysis of rat brain membranes (lanes 1 and 3) and mouse brain lysate (lanes 2 and 4): - 1,2. Anti-GPR17 Antibody (ABIN7043149, ABIN7044435 and ABIN7044436), (1:200).3,4. Anti-GPR17 Antibody, preincubated with GPR17 Blocking Peptide (#BLP-GR048).

### Immunohistochemistry

**Image 2.** Expression of GPR17 in rat parietal cortex - Immunohistochemical staining of perfusion-fixed frozen rat brain sections with Anti-GPR17 Antibody (ABIN7043149, ABIN7044435 and ABIN7044436), (1:300), followed by donkey-anti-rabbit-biotin and streptavidin-Cy3. GPR17 immunoreactivity (red) appears in cortical cells (arrows). Cell nuclei are stained with DAPI (blue).