

Datasheet for ABIN7043150

anti-GPR171 antibody (2nd Extracellular Loop)**3** Images[Go to Product page](#)

Overview

Quantity:	0.2 mL
Target:	GPR171
Binding Specificity:	2nd Extracellular Loop, AA 155-169
Reactivity:	Human, Mouse, Rat
Host:	Rabbit
Clonality:	Polyclonal
Conjugate:	This GPR171 antibody is un-conjugated
Application:	Western Blotting (WB), Flow Cytometry (FACS)

Product Details

Immunogen:	Immunogen: Synthetic peptide Immunogen Sequence: Peptide (C)KDIKEKSNVG(S)MEFK, corresponding to amino acid residues 155 - 169 of mouse GPR171.
Isotype:	IgG
Characteristics:	Anti-GPR171 (extracellular) Antibody (ABIN7043150, ABIN7044447 and ABIN7044448)) is a highly specific antibody directed against an epitope of the mouse protein. The antibody can be used in western blot and live cell flow cytometry. It has been designed to recognize GPR171 from human, rat, and mouse samples.
Purification:	Affinity purified on immobilized antigen.

Target Details

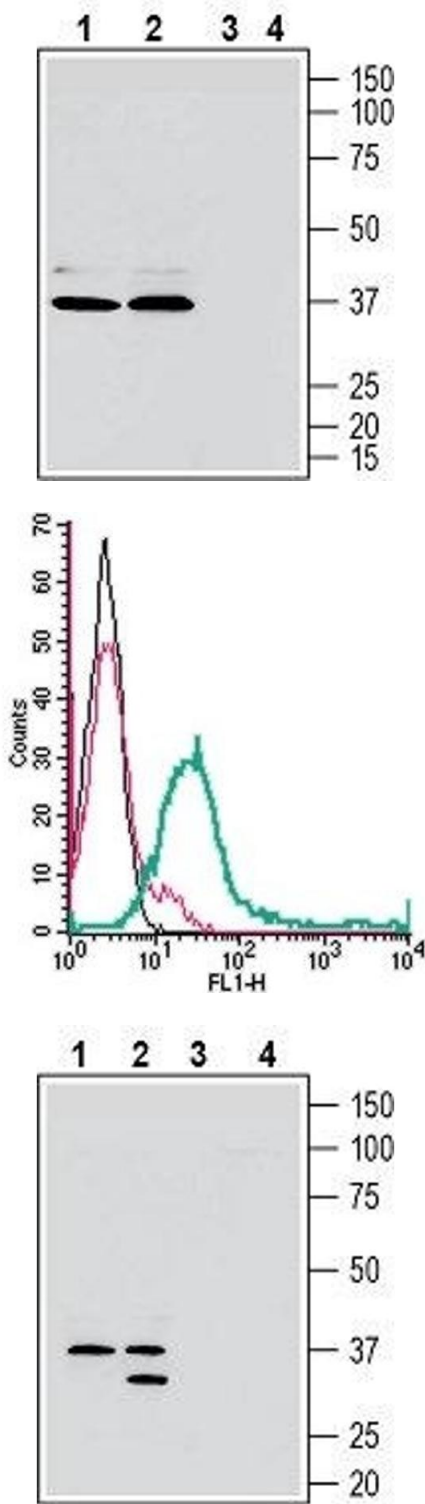
Target:	GPR171
Alternative Name:	GPR171 (GPR171 Products)
Background:	Alternative names: G-Protein Coupled Receptor 171, Platelet Activating Receptor Homolog, G-protein coupled receptor H963
Gene ID:	229323
NCBI Accession:	NM_013308
UniProt:	Q8BG55

Application Details

Application Notes:	Optimal working dilution should be determined by the investigator.
Restrictions:	For Research Use only

Handling

Format:	Lyophilized
Reconstitution:	25 µL, 50 µL or 0.2 mL double distilled water (DDW), depending on the sample size.
Concentration:	0.8 mg/mL
Buffer:	Reconstituted antibody contains phosphate buffered saline (PBS), pH 7.4, 1 % BSA, 0.05 % Sodium azide.
Preservative:	Sodium azide
Precaution of Use:	This product contains Sodium azide: a POISONOUS AND HAZARDOUS SUBSTANCE which should be handled by trained staff only.
Storage:	RT, 4 °C, -20 °C
Storage Comment:	<p>Storage before reconstitution: The antibody ships as a lyophilized powder at room temperature. Upon arrival, it should be stored at -20°C.</p> <p>Storage after reconstitution: The reconstituted solution can be stored at 4°C for up to 1 week. For longer periods, small aliquots should be stored at -20°C. Avoid multiple freezing and thawing. Centrifuge all antibody preparations before use (10000 x g 5 min).</p>



Western Blotting

Image 1. Western blot analysis of human MEG-01 megakaryoblastic leukemia cell line lysate (lanes 1 and 3) and human Jurkat T-cell leukemia cell line lysate (lanes 2 and 4): - 1, 2. Anti-GPR171 (extracellular) Antibody (ABIN7043150, ABIN7044447 and ABIN7044448), (1:200). 3, 4. Anti-GPR171 (extracellular) Antibody, preincubated with GPR171 (extracellular) Blocking Peptide (#BLP-GR054).

Flow Cytometry

Image 2. Cell surface detection of GPR171 in live intact human Jurkat T-cell leukemia cells: (black line) Cells.(red line) Cells + goat-anti-rabbit-FITC.(green line) Cells + Anti-GPR171 (extracellular) Antibody (ABIN7043150, ABIN7044447 and ABIN7044448), (5 µg) + goat-anti-rabbit-FITC.

Western Blotting

Image 3. Western blot analysis of rat brain membranes (lanes 1 and 3) and mouse brain membranes (lanes 2 and 4): - 1, 2. Anti-GPR171 (extracellular) Antibody (ABIN7043150, ABIN7044447 and ABIN7044448), (1:200). 3, 4. Anti-GPR171 (extracellular) Antibody, preincubated with GPR171 (extracellular) Blocking Peptide (#BLP-GR054).