

Datasheet for ABIN7043151
anti-GPR174 antibody (2nd Extracellular Loop)

3 Images

[Go to Product page](#)

Overview

Quantity:	0.2 mL
Target:	GPR174
Binding Specificity:	2nd Extracellular Loop, AA 160-175
Reactivity:	Human, Mouse, Rat
Host:	Rabbit
Clonality:	Polyclonal
Conjugate:	This GPR174 antibody is un-conjugated
Application:	Western Blotting (WB), Flow Cytometry (FACS)

Product Details

Immunogen:	Immunogen: Synthetic peptide Immunogen Sequence: (C)DTSGNRTK(S)FVDLPTR, corresponding to amino acid residues 160 - 175 of human GPR174
Isotype:	IgG
Characteristics:	Anti-GPR174 (extracellular) Antibody (ABIN7043151, ABIN7044455 and ABIN7044456)) is a highly specific antibody directed against an epitope of the human receptor. The antibody can be used in western blot and indirect flow cytometry applications. It has been designed to recognize GPR174 from human, mouse, and rat samples.
Purification:	Affinity purified on immobilized antigen.

Target Details

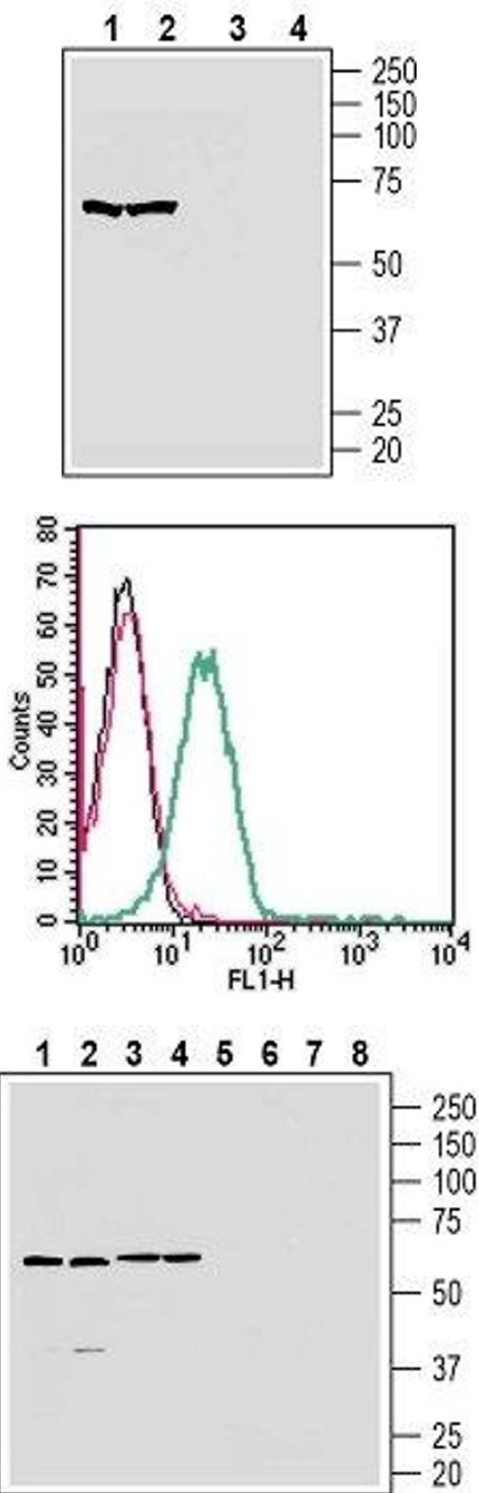
Target:	GPR174
Alternative Name:	GPR174 (GPR174 Products)
Background:	Alternative names: G-protein coupled receptor 174, LYPSR3, GPCR17, FKSG79
Gene ID:	43923
NCBI Accession:	NM_032553
UniProt:	Q9BXC1

Application Details

Application Notes:	Optimal working dilution should be determined by the investigator.
Restrictions:	For Research Use only

Handling

Format:	Lyophilized
Reconstitution:	25 µL, 50 µL or 0.2 mL double distilled water (DDW), depending on the sample size.
Concentration:	0.8 mg/mL
Buffer:	Reconstituted antibody contains phosphate buffered saline (PBS), pH 7.4, 1 % BSA, 0.05 % Sodium azide.
Preservative:	Sodium azide
Precaution of Use:	This product contains Sodium azide: a POISONOUS AND HAZARDOUS SUBSTANCE which should be handled by trained staff only.
Storage:	RT, 4 °C, -20 °C
Storage Comment:	<p>Storage before reconstitution: The antibody ships as a lyophilized powder at room temperature. Upon arrival, it should be stored at -20°C.</p> <p>Storage after reconstitution: The reconstituted solution can be stored at 4°C for up to 1 week. For longer periods, small aliquots should be stored at -20°C. Avoid multiple freezing and thawing. Centrifuge all antibody preparations before use (10000 x g 5 min).</p>



Western Blotting

Image 1. Western blot analysis of human MOLT-4 T-cell leukemia cell line lysate (lanes 1 and 3) and human Jurkat T-cell leukemia cell line lysate (lanes 2 and 4): - 1, 2. Anti-GPR174 (extracellular) Antibody (ABIN7043151, ABIN7044455 and ABIN7044456), (1:400). 3, 4. Anti-GPR174 (extracellular) Antibody, preincubated with GPR174 (extracellular) Blocking Peptide (#BLP-GR060).

Flow Cytometry

Image 2. Cell surface detection of GPR174 in live intact human Jurkat T-cell leukemia cells: (black line) Cells.(red line) Cells + goat-anti-rabbit-FITC.(green line) Cells + Anti-GPR174 (extracellular) Antibody (ABIN7043151, ABIN7044455 and ABIN7044456), (5 µg) + goat-anti-rabbit-FITC.

Western Blotting

Image 3. Western blot analysis of rat brain membranes (lanes 1 and 5), mouse brain lysate (lanes 2 and 6), rat spleen lysate (lanes 3 and 7) and mouse spleen membranes (lanes 4 and 8): - 1-4. Anti-GPR174 (extracellular) Antibody (ABIN7043151, ABIN7044455 and ABIN7044456), (1:400). 5-8. Anti-GPR174 (extracellular) Antibody, preincubated with GPR174 (extracellular) Blocking Peptide (#BLP-GR060).