



[Go to Product page](#)

Datasheet for ABIN7043152

anti-GPR183 antibody (Extracellular, N-Term)

5 Images

Overview

Quantity:	0.2 mL
Target:	GPR183
Binding Specificity:	AA 18-31, Extracellular, N-Term
Reactivity:	Human, Mouse, Rat
Host:	Rabbit
Clonality:	Polyclonal
Conjugate:	This GPR183 antibody is un-conjugated
Application:	Western Blotting (WB), Immunohistochemistry (IHC), Flow Cytometry (FACS)

Product Details

Immunogen:	Immunogen: Synthetic peptide Immunogen Sequence: (C)GND(S)DLYAHHSTAR, corresponding to amino acid residues 18 - 31 of human GPR183
Isotype:	IgG
Characteristics:	Anti-GPR183 (extracellular) Antibody (ABIN7043152, ABIN7044457 and ABIN7044458)) is a highly specific antibody directed against an extracellular epitope of the human protein. The antibody can be used in western blot, immunohistochemistry and flow cytometry applications. It has been designed to recognize GPR183 from mouse, rat and human samples.
Purification:	Affinity purified on immobilized antigen.

Target Details

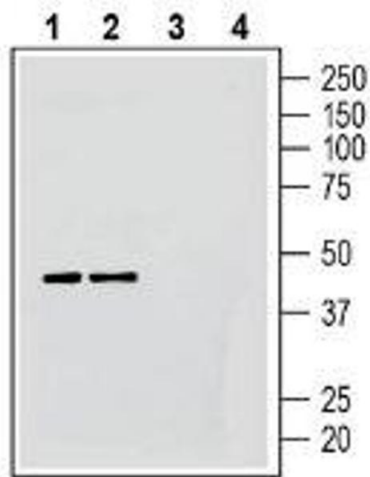
Target:	GPR183
Alternative Name:	GPR183 (GPR183 Products)
Background:	Alternative names: G-Protein Coupled Receptor 183, Epstein-Barr Virus-Induced G-Protein Coupled Receptor 2, EBI2
Gene ID:	41962
NCBI Accession:	NM_004951
UniProt:	P32249

Application Details

Application Notes:	Optimal working dilution should be determined by the investigator.
Restrictions:	For Research Use only

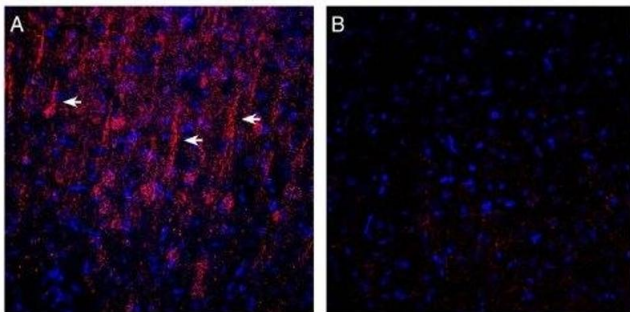
Handling

Format:	Lyophilized
Reconstitution:	25 µL, 50 µL or 0.2 mL double distilled water (DDW), depending on the sample size.
Concentration:	0.8 mg/mL
Buffer:	Reconstituted antibody contains phosphate buffered saline (PBS), pH 7.4, 1 % BSA, 0.05 % Sodium azide.
Preservative:	Sodium azide
Precaution of Use:	This product contains Sodium azide: a POISONOUS AND HAZARDOUS SUBSTANCE which should be handled by trained staff only.
Storage:	RT, 4 °C, -20 °C
Storage Comment:	Storage before reconstitution: The antibody ships as a lyophilized powder at room temperature. Upon arrival, it should be stored at -20°C. Storage after reconstitution: The reconstituted solution can be stored at 4°C for up to 1 week. For longer periods, small aliquots should be stored at -20°C. Avoid multiple freezing and thawing. Centrifuge all antibody preparations before use (10000 x g 5 min).



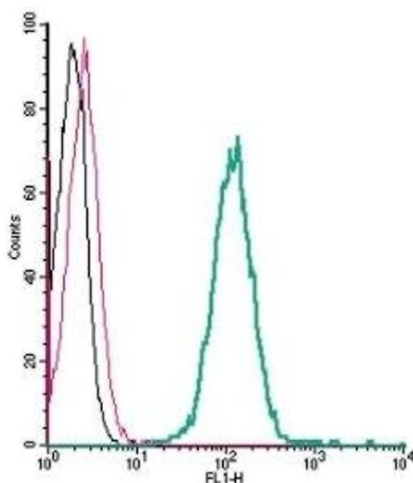
Western Blotting

Image 1. Western blot analysis of human Daudi B-lymphoblast cell line lysates (lanes 1 and 3) and human Jurkat T-cell leukemia cell line lysates (lanes 2 and 4): - 1-2. Anti-GPR183 (extracellular) Antibody (ABIN7043152, ABIN7044457 and ABIN7044458), (1:200). 3-4. Anti-GPR183 Antibody, preincubated with GPR183 (extracellular) Blocking Peptide (BLP-GR063).



Immunohistochemistry

Image 2. Expression of GPR183 in in rat parietal cortex. - Immunohistochemical staining of perfusion-fixed frozen mouse brain sections with Anti-GPR183 (extracellular) Antibody (ABIN7043152, ABIN7044457 and ABIN7044458), (1:1200), followed by donkey anti-rabbit-biotin and streptavidin-Cy3. A. GPR183 immunoreactivity (red) appears in soma and apical dendrite profiles (arrows). B. Pre-incubation of the antibody with GPR183 (extracellular) Blocking Peptide (BLP-GR063), suppressed staining. Cell nuclei are stained with DAPI (blue).



Flow Cytometry

Image 3. Cell surface detection of GPR183 by indirect flow cytometry in live intact human THP-1 monocytic leukemia cells: (black line) Cells.(red line) Cells + goat-anti-rabbit-FITC.(green line) Cells + Anti-GPR183 (extracellular) Antibody (ABIN7043152, ABIN7044457 and ABIN7044458), (2.5 µg) + goat-anti-rabbit-FITC.

Please check the [product details page](#) for more images. Overall 5 images are available for ABIN7043152.