

Datasheet for ABIN7043155

anti-GPR35 antibody (Extracellular, Loop 2) (FITC)[Go to Product page](#)**2** Images

Overview

Quantity:	50 µL
Target:	GPR35
Binding Specificity:	AA 156-170, Extracellular, Loop 2
Reactivity:	Mouse, Rat
Host:	Rabbit
Clonality:	Polyclonal
Conjugate:	This GPR35 antibody is conjugated to FITC
Application:	Flow Cytometry (FACS), Live Cell Imaging (LCI)

Product Details

Immunogen:	Immunogen: Synthetic peptide
	Immunogen Sequence: (C)EGGF(S)FSSQTRRNFS, corresponding to amino acid residues 156 - 170 of mouse GPR35
Isotype:	IgG
Cross-Reactivity (Details):	Not recommended for human samples.
Characteristics:	A Rabbit Polyclonal Antibody to GPR35 (extracellular) conjugated to the fluorescent dye FITC

Target Details

Target:	GPR35
Alternative Name:	G-Protein Coupled Receptor 35 (GPR35 Products)

Target Details

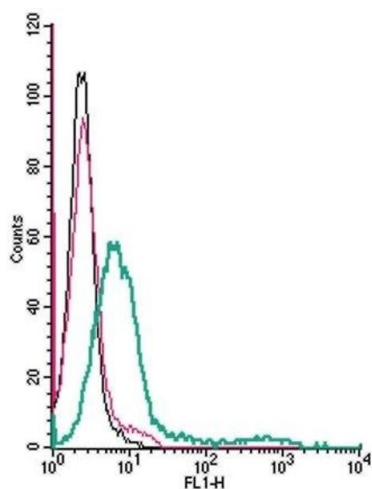
Background:	Alternative names: G-Protein Coupled Receptor 35, Kynurenic Acid Receptor
Gene ID:	2859
NCBI Accession:	NM_001195382
UniProt:	Q9ES90

Application Details

Application Notes:	Optimal working dilution should be determined by the investigator.
Restrictions:	For Research Use only

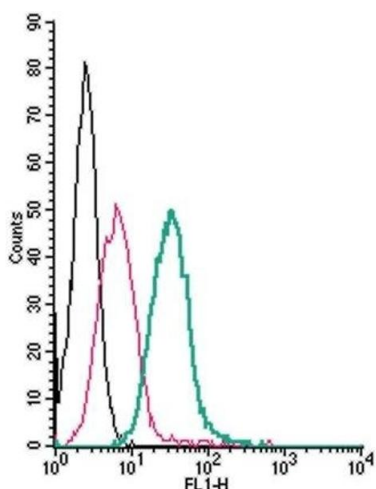
Handling

Format:	Lyophilized
Reconstitution:	50 µL double distilled water (DDW).
Concentration:	1 mg/mL
Buffer:	Reconstituted antibody contains phosphate buffered saline (PBS), pH 7.4, 1 % BSA, 0.05 % Sodium azide.
Preservative:	Sodium azide
Precaution of Use:	This product contains Sodium azide: a POISONOUS AND HAZARDOUS SUBSTANCE which should be handled by trained staff only.
Storage:	RT, 4 °C, -20 °C
Storage Comment:	<p>Storage before reconstitution: The antibody ships as a lyophilized powder at room temperature. Upon arrival, it should be stored at -20°C.</p> <p>Storage after reconstitution: The reconstituted solution can be stored at 4°C, protected from the light, for up to 1 week. For longer periods, small aliquots should be stored at -20°C. Avoid multiple freezing and thawing. Centrifuge all antibody preparations before use (10000 x g 5 min).</p>



Flow Cytometry

Image 1. Cell surface detection of GPR35 by direct flow cytometry in live intact mouse BV-2 microglia cells: (black line) Cells. (red line) Cells + Rabbit IgG isotype control-FITC. (green line) Cells + Anti-GPR35 (extracellular)-FITC Antibody (ABIN7043155, ABIN7045551, ABIN7045552 and ABIN7045553), (5 μ g).



Flow Cytometry

Image 2. Cell surface detection of GPR35 by direct flow cytometry in live intact mouse J774 macrophage cells: (black line) Cells. (red line) Cells + Rabbit IgG isotype control-FITC. (green line) Cells + Anti-GPR35 (extracellular)-FITC Antibody (ABIN7043155, ABIN7045551, ABIN7045552 and ABIN7045553), (2.5 μ g).