

## Datasheet for ABIN7043156 anti-GPR35 antibody (Extracellular, Loop 2)

### 5 Images

[Go to Product page](#)

### Overview

Quantity:	0.2 mL
Target:	GPR35
Binding Specificity:	AA 156-170, Extracellular, Loop 2
Reactivity:	Mouse, Rat
Host:	Rabbit
Clonality:	Polyclonal
Conjugate:	This GPR35 antibody is un-conjugated
Application:	Western Blotting (WB), Immunohistochemistry (IHC), Flow Cytometry (FACS), Live Cell Imaging (LCI)

### Product Details

Immunogen:	Immunogen: Synthetic peptide Immunogen Sequence: (C)EGGF(S)FSSQTRRNFS, corresponding to amino acid residues 156 - 170 of mouse GPR35
Isotype:	IgG
Cross-Reactivity (Details):	Not recommended for human samples.
Characteristics:	Anti-GPR35 (extracellular) Antibody (ABIN7043156, ABIN7044441 and ABIN7044442)) is a highly specific antibody directed against an extracellular epitope of the mouse GPR35. The antibody can be used in western blot and live cell flow cytometry applications. It has been designed to recognize GPR35 from mouse and rat samples. The antibody will not recognize the receptor from human samples.

## Product Details

Purification: Affinity purified on immobilized antigen.

## Target Details

Target: GPR35

Alternative Name: GPR35 ([GPR35 Products](#))

Background: Alternative names: G-Protein Coupled Receptor 35, Kynurenic Acid Receptor

Gene ID: 43473

NCBI Accession: [NM\\_001195382](#)

UniProt: [Q9HC97](#)

## Application Details

Application Notes: Optimal working dilution should be determined by the investigator.

Restrictions: For Research Use only

## Handling

Format: Lyophilized

Reconstitution: 25 µL, 50 µL or 0.2 mL double distilled water (DDW), depending on the sample size.

Concentration: 0.8 mg/mL

Buffer: Reconstituted antibody contains phosphate buffered saline (PBS), pH 7.4, 1 % BSA, 0.05 % Sodium azide.

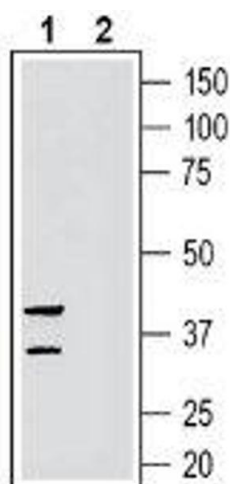
Preservative: Sodium azide

Precaution of Use: This product contains Sodium azide: a POISONOUS AND HAZARDOUS SUBSTANCE which should be handled by trained staff only.

Storage: RT, 4 °C, -20 °C

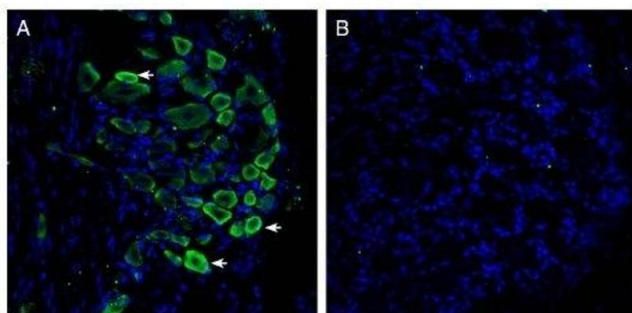
Storage Comment: Storage before reconstitution: The antibody ships as a lyophilized powder at room temperature. Upon arrival, it should be stored at -20°C.

Storage after reconstitution: The reconstituted solution can be stored at 4°C for up to 1 week. For longer periods, small aliquots should be stored at -20°C. Avoid multiple freezing and thawing. Centrifuge all antibody preparations before use (10000 x g 5 min).



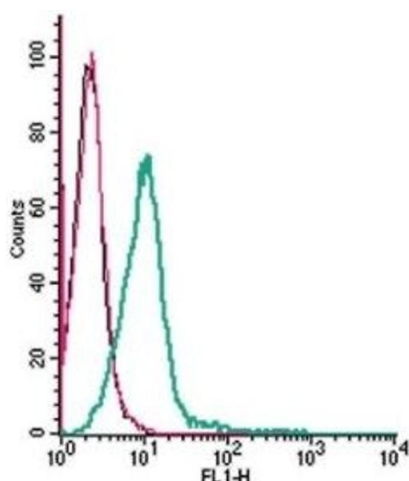
### Western Blotting

**Image 1.** Western blot analysis of rat small intestine lysate: - 1. Anti-GPR35 (extracellular) Antibody (ABIN7043156, ABIN7044441 and ABIN7044442), (1:200). 2. Anti-GPR35 (extracellular) Antibody, preincubated with GPR35 (extracellular) Blocking Peptide (BLP-GR051).



### Immunohistochemistry

**Image 2.** Expression of GPR35 in rat dorsal root ganglion. - Immunohistochemical staining of perfusion-fixed frozen rat dorsal root ganglion (DRG) sections with Anti-GPR35 (extracellular) Antibody (ABIN7043156, ABIN7044441 and ABIN7044442), followed by goat anti-rabbit-AlexaFluor-488. A. GPR35 immunoreactivity (green) appeared in neuron profiles (arrows). B. Pre-incubation of the antibody with GPR35 (extracellular) Blocking Peptide (#BLP-GR051), suppressed staining. Cell nuclei are stained with DAPI (blue).



### Flow Cytometry

**Image 3.** Cell surface detection of GPR35 by indirect flow cytometry in live intact mouse BV-2 microglia cell line: (black line) Cells.(red line) Cells + goat-anti-rabbit-FITC.(green line) Cells + Anti-GPR35 (extracellular) Antibody (ABIN7043156, ABIN7044441 and ABIN7044442), (5 µg) + goat-anti-rabbit-FITC.

Please check the [product details page](#) for more images. Overall 5 images are available for ABIN7043156.