

Datasheet for ABIN7043157
anti-GPR37 antibody (Extracellular, N-Term)[Go to Product page](#)

2 Images

Overview

Quantity:	50 µL
Target:	GPR37
Binding Specificity:	AA 234-247, Extracellular, N-Term
Reactivity:	Human, Rat, Mouse
Host:	Rabbit
Clonality:	Polyclonal
Conjugate:	This GPR37 antibody is un-conjugated
Application:	Western Blotting (WB), Flow Cytometry (FACS)

Product Details

Immunogen:	Immunogen: Synthetic peptide Immunogen Sequence: (C)RVRLKNPFYPLTQE, corresponding to amino acid residues 234-247 of rat GPR37
Isotype:	IgG
Characteristics:	Anti-GPR37 (extracellular) Antibody (ABIN7043157, ABIN7044437 and ABIN7044438)) is a highly specific antibody directed against an epitope of the rat protein. The antibody can be used in western blot and live cell flow cytometry applications. It has been designed to recognize GPR37 from human, rat and mouse samples.
Purification:	Affinity purified on immobilized antigen.

Target Details

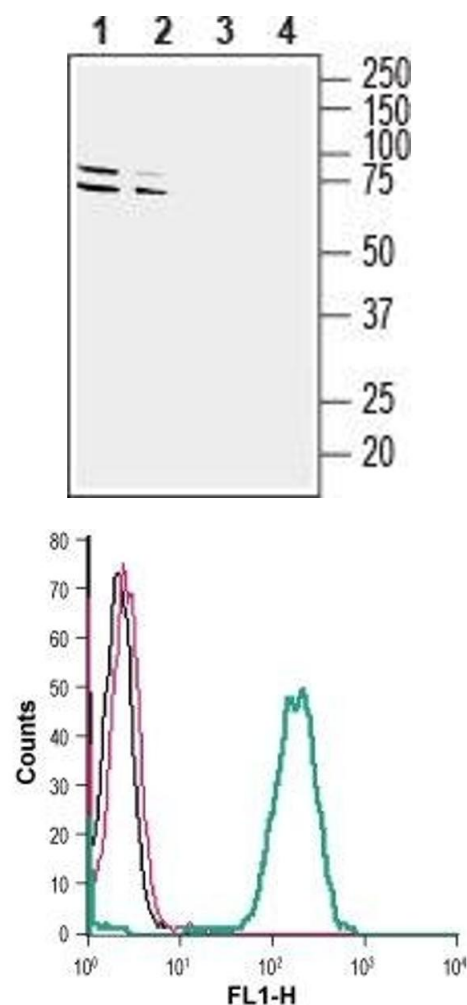
Target:	GPR37
Alternative Name:	GPR37 (GPR37 Products)
Background:	Alternative names: GPR37, G-protein coupled receptor 37, Prosaposin receptor GPR37, Parkin-associated endothelin receptor-like receptor, Endothelin B receptor-like protein 1
Gene ID:	117549
NCBI Accession:	NM_005302
UniProt:	Q9QYC6

Application Details

Application Notes:	Optimal working dilution should be determined by the investigator.
Restrictions:	For Research Use only

Handling

Format:	Lyophilized
Reconstitution:	25 µL, 50 µL or 0.2 mL double distilled water (DDW), depending on the sample size.
Concentration:	0.8 mg/mL
Buffer:	Reconstituted antibody contains phosphate buffered saline (PBS), pH 7.4, 1 % BSA, 0.05 % Sodium azide.
Preservative:	Sodium azide
Precaution of Use:	This product contains Sodium azide: a POISONOUS AND HAZARDOUS SUBSTANCE which should be handled by trained staff only.
Storage:	RT, 4 °C, -20 °C
Storage Comment:	<p>Storage before reconstitution: The antibody ships as a lyophilized powder at room temperature. Upon arrival, it should be stored at -20°C.</p> <p>Storage after reconstitution: The reconstituted solution can be stored at 4°C for up to 1 week. For longer periods, small aliquots should be stored at -20°C. Avoid multiple freezing and thawing. Centrifuge all antibody preparations before use (10000 x g 5 min).</p>



Western Blotting

Image 1. Western blot analysis of mouse (lanes 1 and 3) and rat (lanes 2 and 4) brain lysates: - 1,2. Anti-GPR37 (extracellular) Antibody (ABIN7043157, ABIN7044437 and ABIN7044438), (1:200).3,4. Anti-GPR37 (extracellular) Antibody, preincubated with GPR37 (extracellular) Blocking Peptide (#BLP-GR049).

Flow Cytometry

Image 2. Cell surface detection of GPR37 in live intact human THP-1 monocytic leukemia cells: (black line) Cells.(red line) Cells + goat-anti-rabbit-FITC.(green line) Cells + Anti-GPR37 (extracellular) Antibody (ABIN7043157, ABIN7044437 and ABIN7044438), (2.5 µg) + goat-anti-rabbit-FITC.