

Datasheet for ABIN7043158

anti-GPR37L1 antibody (Extracellular, N-Term)

4 Images

[Go to Product page](#)

Overview

Quantity:	0.2 mL
Target:	GPR37L1
Binding Specificity:	AA 66-80, Extracellular, N-Term
Reactivity:	Human, Mouse, Rat
Host:	Rabbit
Clonality:	Polyclonal
Conjugate:	This GPR37L1 antibody is un-conjugated
Application:	Western Blotting (WB), Immunohistochemistry (IHC), Flow Cytometry (FACS), Live Cell Imaging (LCI)

Product Details

Immunogen:	Immunogen: Synthetic peptide Immunogen Sequence: (C)EYPKPIHPAGLQPTK, corresponding to amino acid residues 66 - 80 of rat GPR37L1
Isotype:	IgG
Characteristics:	Anti-GPR37L1 (extracellular) Antibody (ABIN7043158, ABIN7044439 and ABIN7044440)) is a highly specific antibody directed against an extracellular epitope of the rat GPR37L1. The antibody can be used in western blot, immunohistochemistry, and live cell flow cytometry applications. It has been designed to recognize GPR37L1 from mouse, rat and human samples.
Purification:	Affinity purified on immobilized antigen.

Target Details

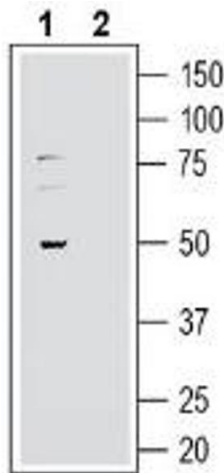
Target:	GPR37L1
Alternative Name:	GPR37L1 (GPR37L1 Products)
Background:	Alternative names: G-Protein Coupled Receptor 37-Like 1, Endothelin B Receptor-Like Protein 2, ETBRLP2, Prosaposin Receptor GPR37L1
Gene ID:	42648
NCBI Accession:	NM_004767
UniProt:	O60883

Application Details

Application Notes:	Optimal working dilution should be determined by the investigator.
Restrictions:	For Research Use only

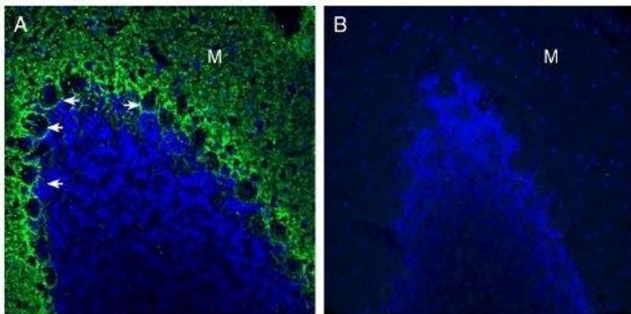
Handling

Format:	Lyophilized
Reconstitution:	25 µL, 50 µL or 0.2 mL double distilled water (DDW), depending on the sample size.
Concentration:	0.8 mg/mL
Buffer:	Reconstituted antibody contains phosphate buffered saline (PBS), pH 7.4, 1 % BSA, 0.05 % Sodium azide.
Preservative:	Sodium azide
Precaution of Use:	This product contains Sodium azide: a POISONOUS AND HAZARDOUS SUBSTANCE which should be handled by trained staff only.
Storage:	RT, 4 °C, -20 °C
Storage Comment:	<p>Storage before reconstitution: The antibody ships as a lyophilized powder at room temperature. Upon arrival, it should be stored at -20°C.</p> <p>Storage after reconstitution: The reconstituted solution can be stored at 4°C for up to 1 week. For longer periods, small aliquots should be stored at -20°C. Avoid multiple freezing and thawing. Centrifuge all antibody preparations before use (10000 x g 5 min).</p>



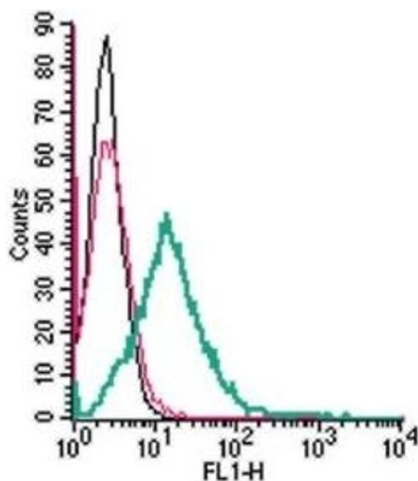
Western Blotting

Image 1. Western blot analysis of human U-87 MG glioblastoma cell line lysate: - 1. Anti-GPR37L1 (extracellular) Antibody (ABIN7043158, ABIN7044439 and ABIN7044440), (1:200). 2. Anti-GPR37L1 (extracellular) Antibody, preincubated with GPR37L1 (extracellular) Blocking Peptide (BLP-GR050).



Immunohistochemistry

Image 2. Expression of GPR37L1 in rat cerebellum. - Immunohistochemical staining of perfusion-fixed frozen rat brain sections with Anti-GPR37L1 (extracellular) Antibody (ABIN7043158, ABIN7044439 and ABIN7044440), (1:300), followed by goat anti-rabbit-AlexaFluor-488. A. GPR37L1 immunoreactivity (green) appeared around Purkinje cell soma (arrows) and in the molecular layer (M). B. Pre-incubation of the antibody with GPR37L1 (extracellular) Blocking Peptide (BLP-GR050), suppressed staining. Cell nuclei are stained with DAPI (blue).



Flow Cytometry

Image 3. Cell surface detection of GPR37L1 by indirect flow cytometry in live intact mouse BV-2 microglia cell line: (black line) Cells. (red line) Cells + goat-anti-rabbit-FITC. (green line) Cells + Anti-GPR37L1 (extracellular) Antibody (ABIN7043158, ABIN7044439 and ABIN7044440), (2.5 µg) + goat-anti-rabbit-FITC.

Please check the [product details page](#) for more images. Overall 4 images are available for ABIN7043158.