

Datasheet for ABIN7043159

**anti-GPR39 antibody (3rd Extracellular Loop)**

## 4 Images

[Go to Product page](#)

## Overview

Quantity:	25 µL
Target:	GPR39
Binding Specificity:	3rd Extracellular Loop, AA 309-320
Reactivity:	Human, Mouse, Rat
Host:	Rabbit
Clonality:	Polyclonal
Conjugate:	This GPR39 antibody is un-conjugated
Application:	Western Blotting (WB)

## Product Details

Immunogen:	Immunogen: Synthetic peptide Immunogen Sequence: (C)KPKHDWTRTYFR, corresponding to amino acid residues 309-320 of mouse GPR39
Isotype:	IgG
Characteristics:	Anti-GPR39 (extracellular) Antibody (ABIN7043159, ABIN7044429 and ABIN7044430)) is a highly specific antibody directed against an epitope of the mouse protein. The antibody can be used in western blot analysis. The antibody recognizes an extracellular epitope and can potentially be used for detecting the protein in living cells. It has been designed to recognize GPR39 from human, mouse, and rat samples.
Purification:	Affinity purified on immobilized antigen.

## Target Details

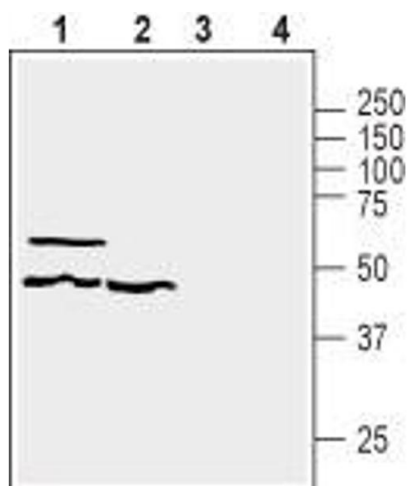
Target:	GPR39
Alternative Name:	GPR39 ( <a href="#">GPR39 Products</a> )
Background:	Alternative names: GPR39, G-protein coupled receptor 39, Zinc receptor GPR39
Gene ID:	71111
NCBI Accession:	<a href="#">NM_001508</a>
UniProt:	<a href="#">Q5U431</a>
Pathways:	<a href="#">Positive Regulation of Peptide Hormone Secretion</a> , <a href="#">Carbohydrate Homeostasis</a> , <a href="#">Feeding Behaviour</a>

## Application Details

Application Notes:	Optimal working dilution should be determined by the investigator.
Restrictions:	For Research Use only

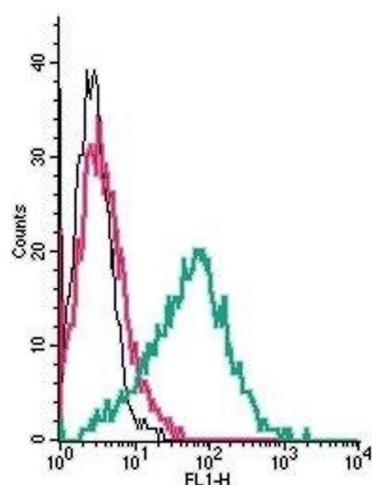
## Handling

Format:	Lyophilized
Reconstitution:	25 µL, 50 µL or 0.2 mL double distilled water (DDW), depending on the sample size.
Concentration:	0.8 mg/mL
Buffer:	Reconstituted antibody contains phosphate buffered saline (PBS), pH 7.4, 1 % BSA, 0.05 % Sodium azide.
Preservative:	Sodium azide
Precaution of Use:	This product contains Sodium azide: a POISONOUS AND HAZARDOUS SUBSTANCE which should be handled by trained staff only.
Storage:	RT, 4 °C, -20 °C
Storage Comment:	<p>Storage before reconstitution: The antibody ships as a lyophilized powder at room temperature. Upon arrival, it should be stored at -20°C.</p> <p>Storage after reconstitution: The reconstituted solution can be stored at 4°C for up to 1 week. For longer periods, small aliquots should be stored at -20°C. Avoid multiple freezing and thawing. Centrifuge all antibody preparations before use (10000 x g 5 min).</p>



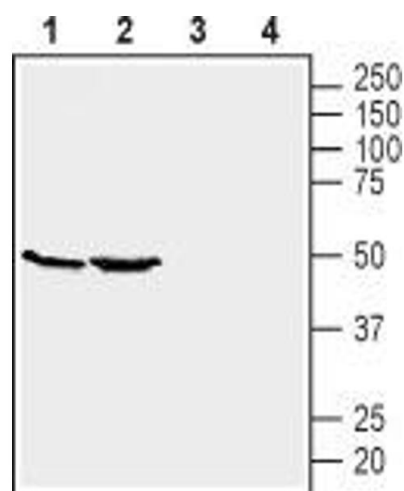
### Western Blotting

**Image 1.** Western blot analysis of human HT-29 colorectal adenocarcinoma (lanes 1 and 3) and human MEG-01 megakaryoblastic leukemia (lanes 2 and 4) cell line lysates: - 1,2 Anti-GPR39 (extracellular) Antibody (ABIN7043159, ABIN7044429 and ABIN7044430), (1:200).3,4. Anti-GPR39 (extracellular) Antibody, preincubated with GPR39 (extracellular) Blocking Peptide (#BLP-GR045).



### Flow Cytometry

**Image 2.** Cell surface detection of GPR39 by indirect flow cytometry in live intact human MEG-01 megakaryocytic leukemia cells: (black line) Cells.(red line) Cells + goat-anti-rabbit-FITC. (green line) Cells +Anti-GPR39 (extracellular) Antibody (ABIN7043159, ABIN7044429 and ABIN7044430), (2.5 µg) + goat-anti-rabbit-FITC



### Western Blotting

**Image 3.** Western blot analysis of mouse kidney (lanes 1 and 3) and brain (lanes 2 and 4) lysates: - 1,2 Anti-GPR39 (extracellular) Antibody (ABIN7043159, ABIN7044429 and ABIN7044430), (1:200).3,4. Anti-GPR39 (extracellular) Antibody, preincubated with GPR39 (extracellular) Blocking Peptide (#BLP-GR045).

Please check the [product details page](#) for more images. Overall 4 images are available for ABIN7043159.