

Datasheet for ABIN7043160
anti-GPR4 antibody (2nd Extracellular Loop)

3 Images

[Go to Product page](#)

Overview

Quantity:	25 µL
Target:	GPR4
Binding Specificity:	2nd Extracellular Loop, AA 162-177
Reactivity:	Human, Rat, Mouse
Host:	Rabbit
Clonality:	Polyclonal
Conjugate:	This GPR4 antibody is un-conjugated
Application:	Western Blotting (WB), Flow Cytometry (FACS)

Product Details

Immunogen:	Immunogen: Synthetic peptide Immunogen Sequence: (C)RDRYNHTF(S)FEKFPME, corresponding to amino acid residues 162-177 of rat GPR4
Isotype:	IgG
Characteristics:	Anti-GPR4 (extracellular) Antibody (ABIN7043160, ABIN7044423 and ABIN7044424)) is a highly specific antibody directed against an epitope of the rat protein. The antibody can be used in western blot and indirect live cell flow cytometry applications. The antibody recognizes an extracellular epitope and is thus ideal for detecting the receptor in living cells. It has been designed to recognize GPR4 from mouse, rat, and human samples.
Purification:	Affinity purified on immobilized antigen.

Target Details

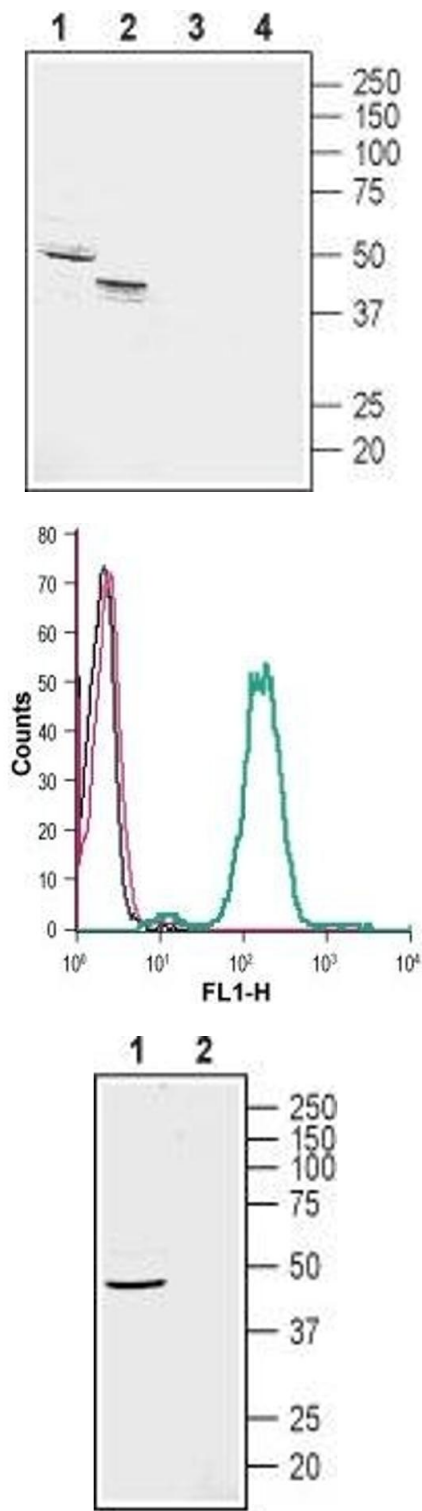
Target:	GPR4
Alternative Name:	GPR4 (GPR4 Products)
Background:	Alternative names: GPR4, Acid-sensing G-protein coupled receptor 4, GPR19
Gene ID:	308408
NCBI Accession:	NM_005282
UniProt:	Q4KLH9

Application Details

Application Notes:	Optimal working dilution should be determined by the investigator.
Restrictions:	For Research Use only

Handling

Format:	Lyophilized
Reconstitution:	25 µL, 50 µL or 0.2 mL double distilled water (DDW), depending on the sample size.
Concentration:	0.8 mg/mL
Buffer:	Reconstituted antibody contains phosphate buffered saline (PBS), pH 7.4, 1 % BSA, 0.05 % Sodium azide.
Preservative:	Sodium azide
Precaution of Use:	This product contains Sodium azide: a POISONOUS AND HAZARDOUS SUBSTANCE which should be handled by trained staff only.
Storage:	RT, 4 °C, -20 °C
Storage Comment:	<p>Storage before reconstitution: The antibody ships as a lyophilized powder at room temperature. Upon arrival, it should be stored at -20°C.</p> <p>Storage after reconstitution: The reconstituted solution can be stored at 4°C for up to 1 week. For longer periods, small aliquots should be stored at -20°C. Avoid multiple freezing and thawing. Centrifuge all antibody preparations before use (10000 x g 5 min).</p>



Western Blotting

Image 1. Western blot analysis of rat (lanes 1 and 3) and mouse (lanes 2 and 4) kidney membranes: - 1,2. Anti-GPR4 (extracellular) Antibody (ABIN7043160, ABIN7044423 and ABIN7044424), (1:200).3,4. Anti-GPR4 (extracellular) Antibody, preincubated with GPR4 (extracellular) Blocking Peptide (#BLP-GR041).

Flow Cytometry

Image 2. Cell surface detection of GPR4 in live intact human THP-1 monocytic leukemia cells: (black line) Cells.(red line) Cells + goat-anti-rabbit-FITC.(green line) Cells + Anti-GPR4 (extracellular) Antibody (ABIN7043160, ABIN7044423 and ABIN7044424), (2.5 µg) + goat-anti-rabbit-FITC.

Western Blotting

Image 3. Western blot analysis of rat dorsal root ganglion lysate: - 1. Anti-GPR4 (extracellular) Antibody (ABIN7043160, ABIN7044423 and ABIN7044424), (1:200).2. Anti-GPR4 (extracellular) Antibody, preincubated with GPR4 (extracellular) Blocking Peptide (#BLP-GR041).