

Datasheet for ABIN7043161  
**anti-GPR52 antibody (3rd Intracellular Loop)**

## 3 Images

[Go to Product page](#)

## Overview

|                      |                                      |
|----------------------|--------------------------------------|
| Quantity:            | 0.2 mL                               |
| Target:              | GPR52                                |
| Binding Specificity: | 3rd Intracellular Loop, AA 239-253   |
| Reactivity:          | Human, Mouse, Rat                    |
| Host:                | Rabbit                               |
| Clonality:           | Polyclonal                           |
| Conjugate:           | This GPR52 antibody is un-conjugated |
| Application:         | Western Blotting (WB)                |

## Product Details

|                  |   |
|------------------|---|
| Immunogen:       | Immunogen: Synthetic peptide  |
|                  | Immunogen Sequence: (C)DRRARFPSHEVEASR, corresponding to amino acid residues 239 - 253 of mouse GPR52   |
| Isotype:         | IgG   |
| Characteristics: | Anti-GPR52 Antibody (ABIN7043161, ABIN7044453 and ABIN7044454) is a highly specific antibody directed against an epitope of the mouse protein. The antibody can be used in western blot and immunohistochemistry. It has been designed to recognize GPR52 from human, mouse, and rat samples. |
| Purification:    | Affinity purified on immobilized antigen.   |

## Target Details

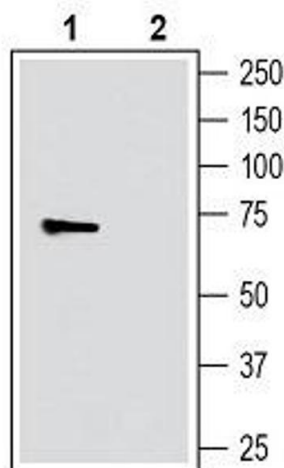
|                   |   |
|-------------------|---|
| Target:           | GPR52   |
| Alternative Name: | GPR52 ( <a href="#">GPR52 Products</a> )                |
| Background:       | Alternative names: G-Protein Coupled Receptor 52, GPR52 |
| Gene ID:          | 620246  |
| NCBI Accession:   | <a href="#">NM_005684</a>                               |
| UniProt:          | <a href="#">P0C5J4</a>                                  |

## Application Details

|                    |  |
|--------------------|--|
| Application Notes: | Optimal working dilution should be determined by the investigator. |
| Restrictions:      | For Research Use only  |

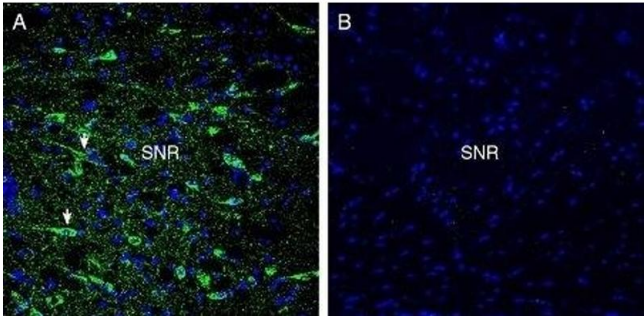
## Handling

|                    |  |
|--------------------|--|
| Format:            | Lyophilized  |
| Reconstitution:    | 25 µL, 50 µL or 0.2 mL double distilled water (DDW), depending on the sample size.   |
| Concentration:     | 0.8 mg/mL  |
| Buffer:            | Reconstituted antibody contains phosphate buffered saline (PBS), pH 7.4, 1 % BSA, 0.05 % Sodium azide.   |
| Preservative:      | Sodium azide   |
| Precaution of Use: | This product contains Sodium azide: a POISONOUS AND HAZARDOUS SUBSTANCE which should be handled by trained staff only.   |
| Storage:           | RT, 4 °C, -20 °C   |
| Storage Comment:   | <p>Storage before reconstitution: The antibody ships as a lyophilized powder at room temperature. Upon arrival, it should be stored at -20°C.</p> <p>Storage after reconstitution: The reconstituted solution can be stored at 4°C for up to 1 week. For longer periods, small aliquots should be stored at -20°C. Avoid multiple freezing and thawing. Centrifuge all antibody preparations before use (10000 x g 5 min).</p> |



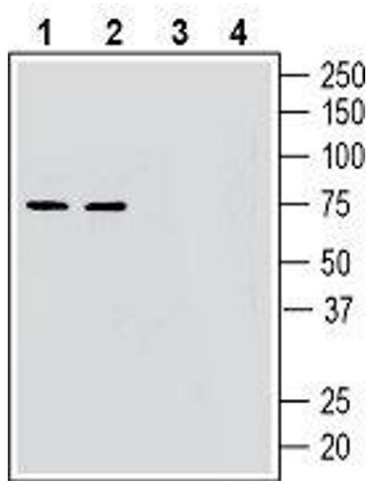
#### Western Blotting

**Image 1.** Western blot analysis of human SH-SY5Y neuroblastoma cell line lysate: - 1. Anti-GPR52 Antibody (ABIN7043161, ABIN7044453 and ABIN7044454), (1:200). 2. Anti-GPR52 Antibody, preincubated with GPR52 Blocking Peptide (#BLP-GR058) (#BLP-GR058).



#### Immunohistochemistry

**Image 2.** Expression of GPR52 in rat substantia nigra - Immunohistochemical staining of perfusion-fixed frozen rat brain sections with Anti-GPR52 Antibody (ABIN7043161, ABIN7044453 and ABIN7044454), (1:300), followed by goat anti-rabbit-AlexaFluor-488. A. GPR52 immunoreactivity (green) appears in neuronal profiles (arrows). B. Pre-incubation of the antibody with GPR52 Blocking Peptide (#BLP-GR058), suppresses staining. Cell nuclei are stained with DAPI (blue). SNR = substantia nigra pars reticulata.



#### Western Blotting

**Image 3.** Western blot analysis of mouse brain lysates (lanes 1 and 3) and rat brain lysates (lanes 2 and 4): - 1, 2. Anti-GPR52 Antibody (ABIN7043161, ABIN7044453 and ABIN7044454), (1:200). 3, 4. Anti-GPR52 Antibody, preincubated with GPR52 Blocking Peptide (#BLP-GR058) (#BLP-GR058).