

Datasheet for ABIN7043163
anti-GPR55 antibody (2nd Extracellular Loop)

4 Images

[Go to Product page](#)

Overview

Quantity:	0.2 mL
Target:	GPR55
Binding Specificity:	2nd Extracellular Loop, AA 160-174
Reactivity:	Human
Host:	Rabbit
Clonality:	Polyclonal
Conjugate:	This GPR55 antibody is un-conjugated
Application:	Western Blotting (WB), Flow Cytometry (FACS)

Product Details

Immunogen:	Immunogen: Synthetic peptide Immunogen Sequence: Peptide (C)HGKVEKYMSFHNMSD, corresponding to amino acid residues 160-174 of human GPR55
Isotype:	IgG
Cross-Reactivity (Details):	The antibody will not recognize the protein from rat or mouse samples.
Characteristics:	Anti-Human GPR55 (extracellular) Antibody (ABIN7043163, ABIN7044200 and ABIN7044201)) is a highly specific antibody directed against an epitope of the human protein. The antibody can be used in western blot and live cell flow cytometry applications. It has been designed to recognize GPR55 from human samples only.
Purification:	Affinity purified on immobilized antigen.

Target Details

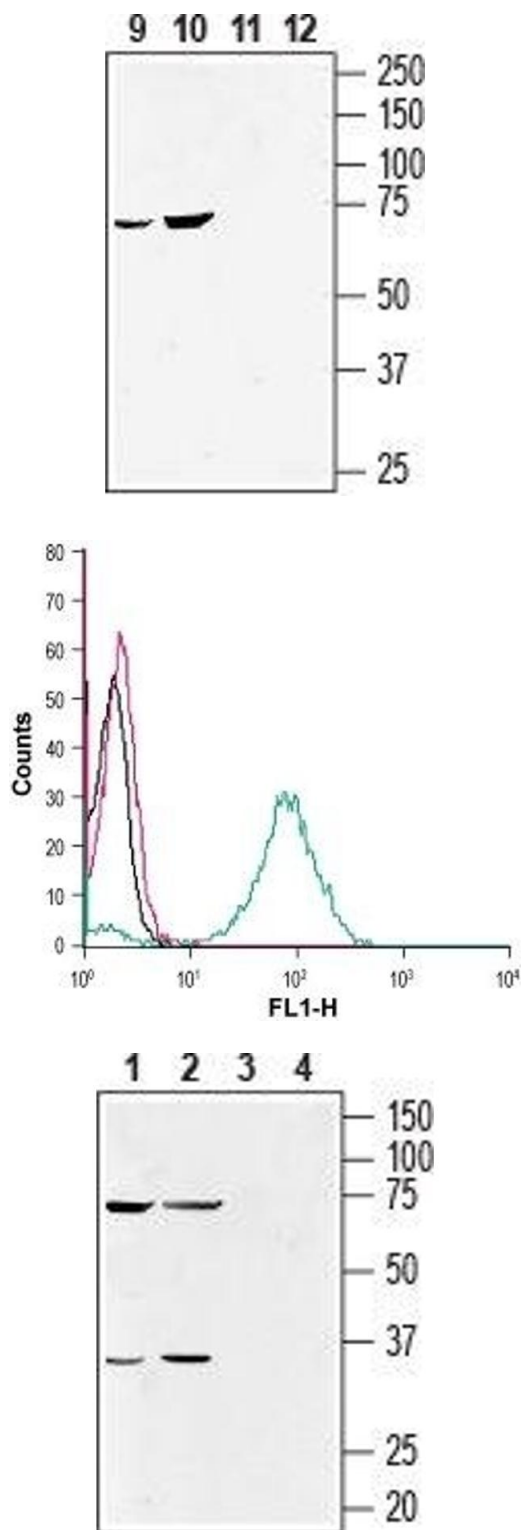
Target:	GPR55
Alternative Name:	GPR55 (GPR55 Products)
Background:	Alternative names: G-protein coupled receptor 55
Gene ID:	9290
NCBI Accession:	NM_005683
UniProt:	Q9Y2T6

Application Details

Application Notes:	Optimal working dilution should be determined by the investigator.
Restrictions:	For Research Use only

Handling

Format:	Lyophilized
Reconstitution:	25 µL, 50 µL or 0.2 mL double distilled water (DDW), depending on the sample size.
Concentration:	0.8 mg/mL
Buffer:	Reconstituted antibody contains phosphate buffered saline (PBS), pH 7.4, 1 % BSA, 0.05 % Sodium azide.
Preservative:	Sodium azide
Precaution of Use:	This product contains Sodium azide: a POISONOUS AND HAZARDOUS SUBSTANCE which should be handled by trained staff only.
Storage:	RT, 4 °C, -20 °C
Storage Comment:	<p>Storage before reconstitution: The antibody ships as a lyophilized powder at room temperature. Upon arrival, it should be stored at -20°C.</p> <p>Storage after reconstitution: The reconstituted solution can be stored at 4°C for up to 1 week. For longer periods, small aliquots should be stored at -20°C. Avoid multiple freezing and thawing. Centrifuge all antibody preparations before use (10000 x g 5 min).</p>



Western Blotting

Image 1. Western blot analysis of human HMC3 microglia cell (lanes 9 and 11) (1:500) and human chronic myelogenous leukemia MEG-O1 cell (lanes 10 and 12) (1:200) lysates: - 9, 10. Anti-Human GPR55 (extracellular) Antibody, (ABIN7043163, ABIN7044200 and ABIN7044201). 11, 12. Anti-Human GPR55 (extracellular) Antibody, preincubated with Human GPR55 (extracellular) Blocking Peptide (#BLP-CR061) (#BLP-CR061).

Flow Cytometry

Image 2. Cell surface detection of GPR55 in live intact human THP-1 monocytic leukemia cells: (black line) Cells.(red line) Cells + goat-anti-rabbit-FITC.(green line) Cells + Anti-Human GPR55 (extracellular) Antibody (ABIN7043163, ABIN7044200 and ABIN7044201), (2.5 µg/5x10⁵ cells) + goat-anti-rabbit-FITC.

Western Blotting

Image 3. Western blot analysis of human NK-92MI natural killer cell (lanes 1 and 3) (1:500) and human acute monocytic leukemia THP-1 cell (lanes 2 and 4) (1:200) lysates: - 1, 2. Anti-Human GPR55 (extracellular) Antibody (ABIN7043163, ABIN7044200 and ABIN7044201). 3, 4. Anti-Human GPR55 (extracellular) Antibody, preincubated with Human GPR55 (extracellular) Blocking Peptide (#BLP-CR061) (#BLP-CR061).

Please check the [product details page](#) for more images. Overall 4 images are available for ABIN7043163.