

Datasheet for ABIN7043164

anti-GPR55 antibody (3rd Extracellular Loop) (FITC)**2** Images[Go to Product page](#)

Overview

Quantity:	50 µL
Target:	GPR55
Binding Specificity:	3rd Extracellular Loop, AA 261-275
Reactivity:	Mouse, Rat
Host:	Rabbit
Clonality:	Polyclonal
Conjugate:	This GPR55 antibody is conjugated to FITC
Application:	Flow Cytometry (FACS)

Product Details

Immunogen:	Immunogen: Synthetic peptide Immunogen Sequence: (C)RNRFIELD(S)RMKQGIS, corresponding to amino acid residues 261 - 275 of mouse GPR55
Isotype:	IgG
Characteristics:	Anti-GPR55 (extracellular) Antibody (ABIN7043162, ABIN7044202 and ABIN7044203)) is a highly specific antibody directed against an epitope of the mouse protein. The antibody can be used in western blot and live cell flow cytometry applications. It has been designed to recognize GPR55 from human, rat, and mouse samples. The antibody will not recognize the protein from human samples. \nAnti-GPR55 (extracellular)-FITC Antibody (ABIN7043162, ABIN7044202 and ABIN7044203)-F is directly conjugated to fluorescein isothiocyanate (FITC). The antibody can be used in immunofluorescent applications such as direct live cell flow cytometry. The antibody will not recognize the protein from human samples.

Product Details

Purification: Affinity purified on immobilized antigen.

Target Details

Target: GPR55

Alternative Name: GPR55 ([GPR55 Products](#))

Background: Alternative names: G-Protein Coupled Receptor 55

Gene ID: 42648

NCBI Accession: [NM_005683](#)

UniProt: [Q9Y2T6](#)

Application Details

Application Notes: Optimal working dilution should be determined by the investigator.

Restrictions: For Research Use only

Handling

Format: Lyophilized

Reconstitution: 50 µL double distilled water (DDW).

Concentration: 1 mg/mL

Buffer: Reconstituted antibody contains phosphate buffered saline (PBS), pH 7.4, 1 % BSA, 0.05 % Sodium azide.

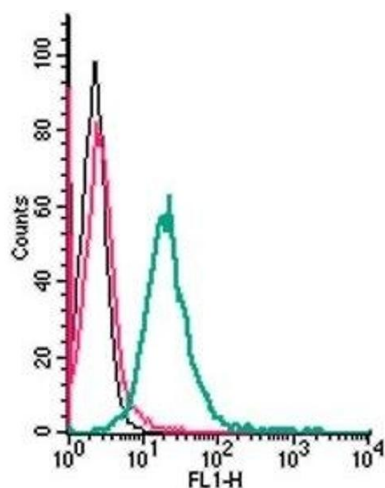
Preservative: Sodium azide

Precaution of Use: This product contains Sodium azide: a POISONOUS AND HAZARDOUS SUBSTANCE which should be handled by trained staff only.

Storage: RT, 4 °C, -20 °C

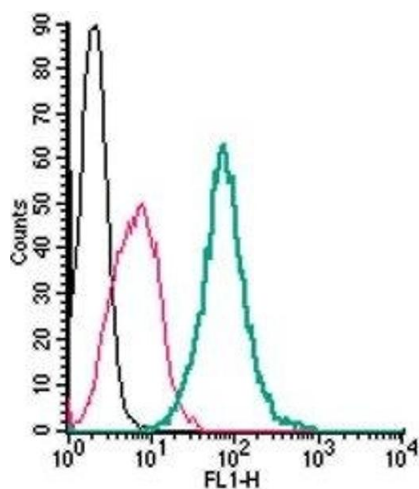
Storage Comment: Storage before reconstitution: The antibody ships as a lyophilized powder at room temperature. Upon arrival, it should be stored at -20°C.

Storage after reconstitution: The reconstituted solution can be stored at 4°C, protected from the light, for up to 1 week. For longer periods, small aliquots should be stored at -20°C. Avoid multiple freezing and thawing. Centrifuge all antibody preparations before use (10000 x g 5 min).



Flow Cytometry

Image 1. Cell surface detection of GPR55 in live intact mouse BV-2 microglia cells: (black line) Cells.(red line) Cells + Rabbit IgG isotype control-FITC.(green line) Cells + Anti-GPR55 (extracellular)-FITC Antibody (ABIN7043164, ABIN7045508, ABIN7045509 and ABIN7045510), (2.5 μ g).



Flow Cytometry

Image 2. Cell surface detection of GPR55 in live intact mouse J774 macrophage cells: (black line) Cells.(red line) Cells + Rabbit IgG isotype control-FITC.(green line) Cells + Anti-GPR55 (extracellular)-FITC Antibody (ABIN7043164, ABIN7045508, ABIN7045509 and ABIN7045510), (2.5 μ g).