

Datasheet for ABIN7043165 anti-GPR56 antibody (Extracellular, N-Term)

[Go to Product page](#)

3 Images

Overview

Quantity:	50 µL
Target:	GPR56
Binding Specificity:	AA 86-109, Extracellular, N-Term
Reactivity:	Human, Mouse, Rat
Host:	Rabbit
Clonality:	Polyclonal
Conjugate:	This GPR56 antibody is un-conjugated
Application:	Western Blotting (WB), Flow Cytometry (FACS)

Product Details

Immunogen:	Immunogen: Synthetic peptide
	Immunogen Sequence: (C)RHTGRLHLRYGKND, corresponding to amino acid residues 86-109 of rat GPR56
Isotype:	IgG
Cross-Reactivity (Details):	This antibody recognizes the N-terminal fragment (GPR56-NT), that can be secreted to the media.
Characteristics:	Anti-GPR56 (extracellular) Antibody (ABIN7043165, ABIN7044433 and ABIN7044434)) is a highly specific antibody directed against an epitope of the rat protein. The antibody can be used in western blot and indirect flow cytometry applications. It recognizes an extracellular epitope and can potentially detect the protein in living cells. It has been designed to recognize ADGRG1 from rat, mouse, and human samples. The antibody recognizes the N-terminal fragment

Product Details

(GPR56-NT) that can be secreted to the media.

Purification: Affinity purified on immobilized antigen.

Target Details

Target: GPR56

Alternative Name: GPR56 ([GPR56 Products](#))

Background: Alternative names: GPR56, G-protein coupled receptor 56, Adhesion G-protein coupled receptor G1, ADGRG1

Gene ID: 260326

NCBI Accession: [NM_001145770](#)

UniProt: [Q8K3V3](#)

Application Details

Application Notes: Optimal working dilution should be determined by the investigator.

Restrictions: For Research Use only

Handling

Format: Lyophilized

Reconstitution: 25 µL, 50 µL or 0.2 mL double distilled water (DDW), depending on the sample size.

Concentration: 0.8 mg/mL

Buffer: Reconstituted antibody contains phosphate buffered saline (PBS), pH 7.4, 1 % BSA, 0.05 % Sodium azide.

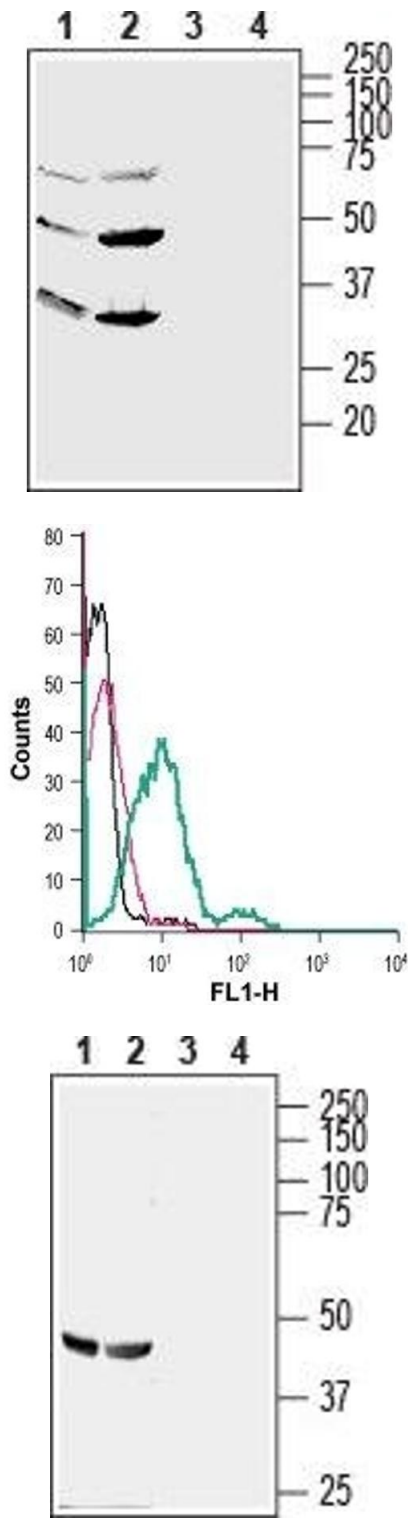
Preservative: Sodium azide

Precaution of Use: This product contains Sodium azide: a POISONOUS AND HAZARDOUS SUBSTANCE which should be handled by trained staff only.

Storage: RT, 4 °C, -20 °C

Storage Comment: Storage before reconstitution: The antibody ships as a lyophilized powder at room temperature. Upon arrival, it should be stored at -20°C.
Storage after reconstitution: The reconstituted solution can be stored at 4°C for up to 1 week. For longer periods, small aliquots should be stored at -20°C. Avoid multiple freezing and

thawing. Centrifuge all antibody preparations before use (10000 x g 5 min).



Western Blotting

Image 1. Western blot analysis of human HL-60 promyelocytic leukemia (lanes 1 and 3) and human NK-92 natural killer (lanes 2 and 4) cell line lysates: - 1,2. Anti-GPR56 (extracellular) Antibody (ABIN7043165, ABIN7044433 and ABIN7044434), (1:200).3,4. Anti-GPR56 (extracellular) Antibody, preincubated with GPR56 (extracellular) Blocking Peptide (#BLP-GR047).

Flow Cytometry

Image 2. Cell surface detection of GPR56 in live intact human HL-60 promyelocytic leukemia cells: (black line) Cells.(red line) Cells + goat-anti-rabbit-FITC.(green line) Cells + Anti-GPR56 (extracellular) Antibody (ABIN7043165, ABIN7044433 and ABIN7044434), 5 µg + goat-anti-rabbit-FITC.

Western Blotting

Image 3. Western blot analysis of rat (lanes 1 and 3) and mouse (lanes 2 and 4) brain lysates: - 1,2. Anti-GPR56 (extracellular) Antibody (ABIN7043165, ABIN7044433 and ABIN7044434), (1:200).3,4. Anti-GPR56 (extracellular) Antibody, preincubated with GPR56 (extracellular) Blocking Peptide (#BLP-GR047).