

Datasheet for ABIN7043166

anti-GPR56 antibody (Extracellular, N-Term) (FITC)



[Go to Product page](#)

2 Images

Overview

Quantity:	50 µL
Target:	GPR56
Binding Specificity:	AA 86-109, Extracellular, N-Term
Reactivity:	Human, Mouse, Rat
Host:	Rabbit
Clonality:	Polyclonal
Conjugate:	This GPR56 antibody is conjugated to FITC
Application:	Flow Cytometry (FACS)

Product Details

Immunogen:	Immunogen: Synthetic peptide Immunogen Sequence: (C)RHTGRLHLRYGKND, corresponding to amino acid residues 86-109 of rat GPR56
Isotype:	IgG
Cross-Reactivity (Details):	This antibody recognizes the N-terminal fragment (GPR56-NT), that can be secreted to the media.
Characteristics:	Anti-GPR56 (extracellular) Antibody (ABIN7043165, ABIN7044433 and ABIN7044434)) is a highly specific antibody directed against an epitope of the rat protein. The antibody can be used in western blot and indirect flow cytometry applications. It recognizes an extracellular epitope and can potentially detect the protein in living cells. It has been designed to recognize ADGRG1 from rat, mouse, and human samples. The antibody recognizes the N-terminal fragment

Product Details

(GPR56-NT) that can be secreted to the media. \nAnti-GPR56 (extracellular)-FITC Antibody (ABIN7043165, ABIN7044433 and ABIN7044434)-F) is directly conjugated to fluorescein isothiocyanate (FITC). The antibody can be used in immunofluorescent applications such as direct live cell flow cytometry.

Purification: Affinity purified on immobilized antigen.

Target Details

Target:	GPR56
Alternative Name:	GPR56 (GPR56 Products)
Background:	Alternative names: G-protein coupled receptor 56, Adhesion G-protein coupled receptor G1, ADGRG1
Gene ID:	260326
NCBI Accession:	NM_001145770
UniProt:	Q8K3V3

Application Details

Application Notes:	Optimal working dilution should be determined by the investigator.
Restrictions:	For Research Use only

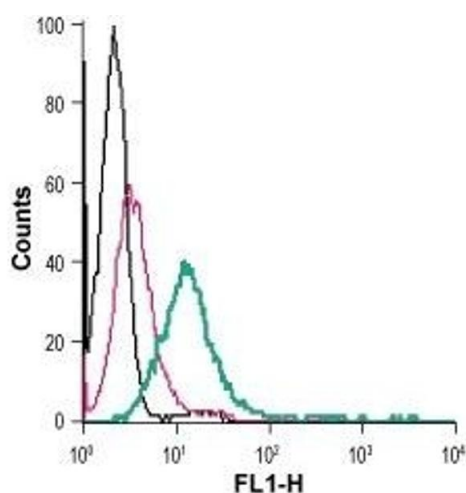
Handling

Format:	Lyophilized
Reconstitution:	50 µL double distilled water (DDW).
Concentration:	1 mg/mL
Buffer:	Reconstituted antibody contains phosphate buffered saline (PBS), pH 7.4, 1 % BSA, 0.05 % Sodium azide.
Preservative:	Sodium azide
Precaution of Use:	This product contains Sodium azide: a POISONOUS AND HAZARDOUS SUBSTANCE which should be handled by trained staff only.
Storage:	RT, 4 °C, -20 °C
Storage Comment:	Storage before reconstitution: The antibody ships as a lyophilized powder at room temperature.

Upon arrival, it should be stored at -20°C.

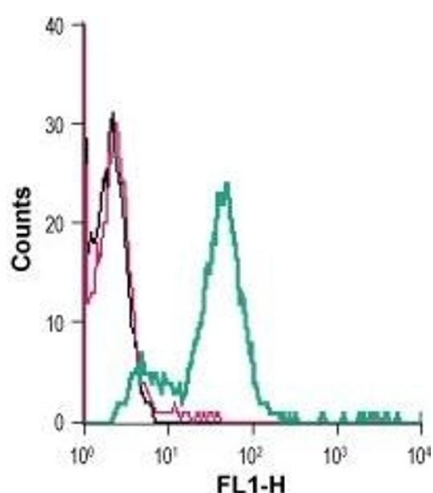
Storage after reconstitution: The reconstituted solution can be stored at 4°C, protected from the light, for up to 1 week. For longer periods, small aliquots should be stored at -20°C. Avoid multiple freezing and thawing. Centrifuge all antibody preparations before use (10000 x g 5 min).

Images



Flow Cytometry

Image 1. Cell surface detection of GPR56 in live intact human HL-60 promyelocytic leukemia cells: (black line) Cells. (red line) Cells + Rabbit IgG isotype control-FITC. (green line) Cells + Anti-GPR56 (extracellular)-FITC Antibody (ABIN7043166, ABIN7045548, ABIN7045549 and ABIN7045550), (5 µg).



Flow Cytometry

Image 2. Cell surface detection of GPR56 in live intact mouse BV-2 microglia cells: (black line) Cells. (red line) Cells + Rabbit IgG isotype control-FITC. (green line) Cells + Anti-GPR56 (extracellular)-FITC Antibody (ABIN7043166, ABIN7045548, ABIN7045549 and ABIN7045550), (2.5 µg).