

Datasheet for ABIN7043169

**anti-GPR65 antibody (1st Extracellular Loop) (PE)**[Go to Product page](#)**2** Images

## Overview

Quantity:	50 µL
Target:	GPR65
Binding Specificity:	1st Extracellular Loop, AA 72-84
Reactivity:	Human, Mouse, Rat
Host:	Rabbit
Clonality:	Polyclonal
Conjugate:	This GPR65 antibody is conjugated to PE
Application:	Flow Cytometry (FACS)

## Product Details

Immunogen:	Immunogen: Synthetic peptide
	Immunogen Sequence: (C)DYTWNKDNWTFSP, corresponding to amino acid residues 72 - 84 of human GPR65
Isotype:	IgG
Characteristics:	Anti-GPR65 (TDAG8) (extracellular) Antibody (ABIN7043167, ABIN7044427 and ABIN7044428)) is a highly specific antibody directed against an epitope of the human protein. The antibody can be used in western blot, immunohistochemistry, and live cell flow cytometry. It has been designed to recognize GPR65 from rat, mouse, and human samples. \nAnti-GPR65 (TDAG8) (extracellular)-PE Antibody (ABIN7043169, ABIN7045545, ABIN7045546 and ABIN7045547)) is directly conjugated to Phycoerythrin (PE). This labeled antibody can be used in immunofluorescent applications such as direct flow cytometry and live cell imaging.

## Product Details

Purification: Affinity purified on immobilized antigen.

## Target Details

Target: GPR65

Alternative Name: GPR65 (TDAG8) ([GPR65 Products](#))

Background: Alternative names: G-protein coupled receptor 65, T-cell death-associated gene 8 protein, Psychosine receptor

Gene ID: 8477

NCBI Accession: [NM\\_003608](#)

UniProt: [Q8IYL9](#)

Pathways: [cAMP Metabolic Process](#)

## Application Details

Application Notes: Optimal working dilution should be determined by the investigator.

Restrictions: For Research Use only

## Handling

Format: Lyophilized

Reconstitution: 50 µL double distilled water (DDW).

Concentration: 1 mg/mL

Buffer: Reconstituted antibody contains phosphate buffered saline (PBS), pH 7.4, 1 % BSA, 0.05 % Sodium azide.

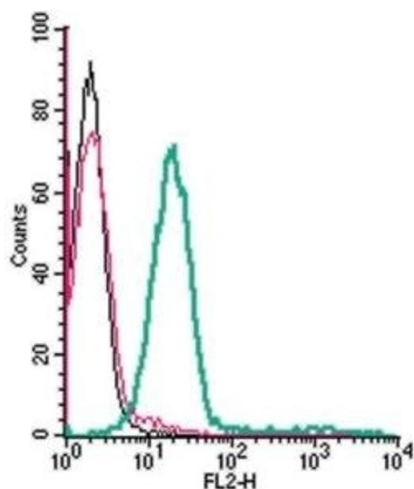
Preservative: Sodium azide

Precaution of Use: This product contains Sodium azide: a POISONOUS AND HAZARDOUS SUBSTANCE which should be handled by trained staff only.

Storage: RT, 4 °C, -20 °C

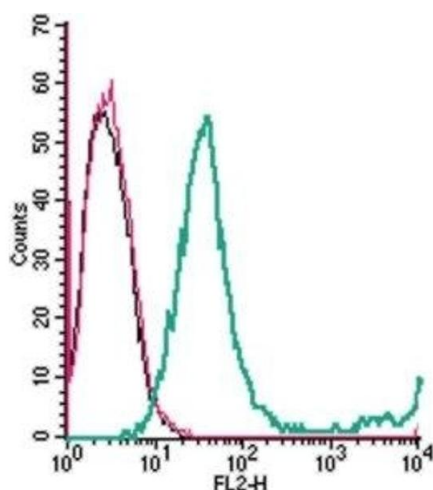
Storage Comment: Storage before reconstitution: The antibody ships as a lyophilized powder at room temperature. Upon arrival, it should be stored at -20°C.  
Storage after reconstitution: The reconstituted solution can be stored at 4°C, protected from the light, for up to 1 week. For longer periods, small aliquots should be stored at -20°C. Avoid

multiple freezing and thawing. Centrifuge all antibody preparations before use (10000 x g 5 min).



### Flow Cytometry

**Image 1.** Cell surface detection of GPR65 in live intact human THP-1 monocytic leukemia cells: (black line) Cells. (red line) Cells + Rabbit IgG isotype control-PE. (green line) Cells + Anti-GPR65 (TDAG8) (extracellular)-PE Antibody (ABIN7043169, ABIN7045545, ABIN7045546 and ABIN7045547), (5  $\mu$ g).



### Flow Cytometry

**Image 2.** Cell surface detection of GPR65 in live intact mouse EL4 T-cell lymphoma cells: (black line) Cells. (red line) Cells + Rabbit IgG isotype control-PE. (green line) Cells + Anti-GPR65 (TDAG8) (extracellular)-PE Antibody (ABIN7043169, ABIN7045545, ABIN7045546 and ABIN7045547), (5  $\mu$ g).