

Datasheet for ABIN7043170  
**anti-GPR68 antibody (2nd Extracellular Loop)**

## 3 Images

[Go to Product page](#)

## Overview

Quantity:	25 µL
Target:	GPR68
Binding Specificity:	2nd Extracellular Loop, AA 169-183
Reactivity:	Human, Mouse, Rat
Host:	Rabbit
Clonality:	Polyclonal
Conjugate:	This GPR68 antibody is un-conjugated
Application:	Western Blotting (WB), Flow Cytometry (FACS)

## Product Details

Immunogen:	Immunogen: Synthetic peptide Immunogen Sequence: (C)HRV(S)FEHYPIQAWQR, corresponding to amino acid residues 169-183 of mouse GPR68
Isotype:	IgG
Characteristics:	Anti-GPR68 (OGR1) (extracellular) Antibody (ABIN7043170, ABIN7044425 and ABIN7044426)) is a highly specific antibody directed against an epitope of the mouse ovarian cancer G-protein coupled receptor 1. The antibody can be used in western blot and live cell flow cytometry applications. It has been designed to recognize GPR68 from rat, mouse, and human samples.
Purification:	Affinity purified on immobilized antigen.

## Target Details

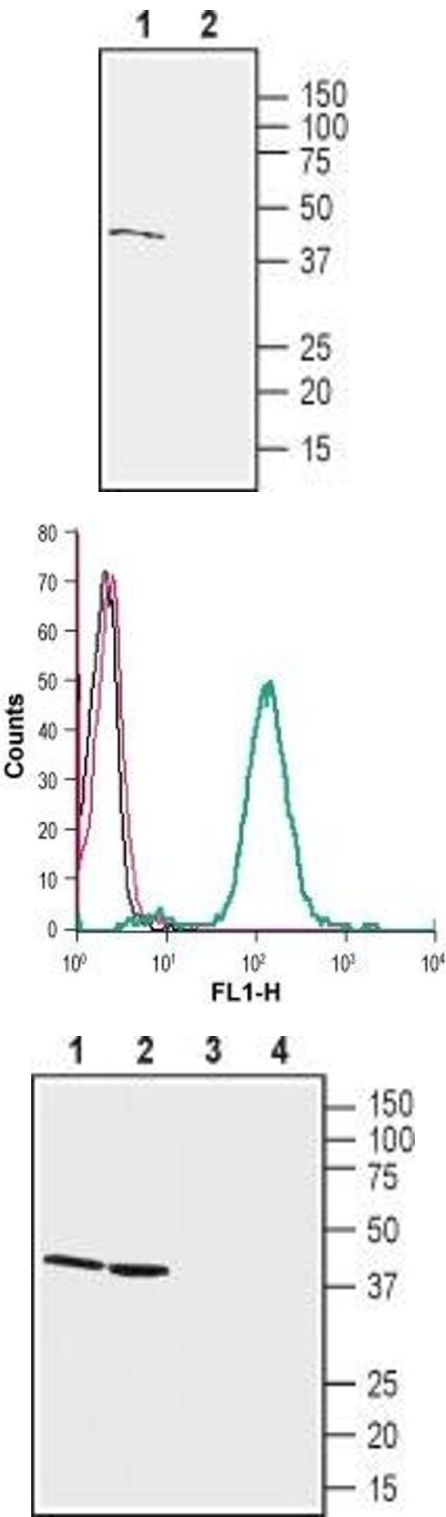
Target:	GPR68
Alternative Name:	GPR68 (OGR1) ( <a href="#">GPR68 Products</a> )
Background:	Alternative names: GPR68/OGR1, Acid-sensing G-protein coupled receptor 68, Ovarian cancer G-protein coupled receptor 1, Sphingosylphosphorylcholine receptor
Gene ID:	238377
NCBI Accession:	<a href="#">NM_001177676</a>
UniProt:	<a href="#">Q8BFQ3</a>

## Application Details

Application Notes:	Optimal working dilution should be determined by the investigator.
Restrictions:	For Research Use only

## Handling

Format:	Lyophilized
Reconstitution:	25 µL, 50 µL or 0.2 mL double distilled water (DDW), depending on the sample size.
Concentration:	0.8 mg/mL
Buffer:	Reconstituted antibody contains phosphate buffered saline (PBS), pH 7.4, 1 % BSA, 0.05 % Sodium azide.
Preservative:	Sodium azide
Precaution of Use:	This product contains Sodium azide: a POISONOUS AND HAZARDOUS SUBSTANCE which should be handled by trained staff only.
Storage:	RT, 4 °C, -20 °C
Storage Comment:	<p>Storage before reconstitution: The antibody ships as a lyophilized powder at room temperature. Upon arrival, it should be stored at -20°C.</p> <p>Storage after reconstitution: The reconstituted solution can be stored at 4°C for up to 1 week. For longer periods, small aliquots should be stored at -20°C. Avoid multiple freezing and thawing. Centrifuge all antibody preparations before use (10000 x g 5 min).</p>



Western Blotting

**Image 1.** Western blot analysis of rat heart membranes: -  
1. Anti-GPR68 (OGR1) (extracellular) Antibody (ABIN7043170, ABIN7044425 and ABIN7044426), (1:200).2. Anti-GPR68 (OGR1) (extracellular) Antibody, preincubated with GPR68/OGR1 (extracellular) Blocking Peptide (#BLP-GR042).

Flow Cytometry

**Image 2.** Cell surface detection of GPR68 in live intact human THP-1 monocytic leukemia cells: (black line) Cells.(red line) Cells + goat-anti-rabbit-FITC.(green line) Cells + Anti-GPR68 (OGR1) (extracellular) Antibody (ABIN7043170, ABIN7044425 and ABIN7044426), (2.5 µg) + goat-anti-rabbit-FITC.

Western Blotting

**Image 3.** Western blot analysis of rat kidney lysates (lanes 1 and 3) and mouse kidney membranes (lanes 2 and 4): -  
1,2. Anti-GPR68 (OGR1) (extracellular) Antibody (ABIN7043170, ABIN7044425 and ABIN7044426), (1:200).3,4. Anti-GPR68 (OGR1) (extracellular) Antibody, preincubated with GPR68/OGR1 (extracellular) Blocking Peptide (#BLP-GR042).