

Datasheet for ABIN7043171

anti-GPR68 antibody (2nd Extracellular Loop) (FITC)



[Go to Product page](#)

2 Images

Overview

Quantity:	50 µL
Target:	GPR68
Binding Specificity:	2nd Extracellular Loop, AA 169-183
Reactivity:	Human, Mouse, Rat
Host:	Rabbit
Clonality:	Polyclonal
Conjugate:	This GPR68 antibody is conjugated to FITC
Application:	Flow Cytometry (FACS)

Product Details

Immunogen:	<p>Immunogen: Synthetic peptide</p> <p>Immunogen Sequence: (C)HRV(S)FEHYPIQAWQR, corresponding to amino acid residues 169-183 of mouse GPR68</p>
Isotype:	IgG
Characteristics:	<p>Anti-GPR68 (OGR1) (extracellular) Antibody (ABIN7043170, ABIN7044425 and ABIN7044426) is a highly specific antibody directed against an epitope of the mouse ovarian cancer G-protein coupled receptor 1. The antibody can be used in western blot and live cell flow cytometry applications. It has been designed to recognize GPR68 from rat, mouse, and human samples.</p> <p>Anti-GPR68 (OGR1) (extracellular)-FITC Antibody (ABIN7043170, ABIN7044425 and ABIN7044426)-F is directly conjugated to fluorescein isothiocyanate (FITC). The antibody can be used in immunofluorescent applications such as direct live cell flow cytometry.</p>

Product Details

Purification: Affinity purified on immobilized antigen.

Target Details

Target: GPR68

Alternative Name: GPR68 (OGR1) ([GPR68 Products](#))

Background: Alternative names: GPR68/OGR1, Acid-sensing G-protein coupled receptor 68, Ovarian cancer G-protein coupled receptor 1, Sphingosylphosphorylcholine receptor

Gene ID: 238377

NCBI Accession: [NM_001177676](#)

UniProt: [Q8BFQ3](#)

Application Details

Application Notes: Optimal working dilution should be determined by the investigator.

Restrictions: For Research Use only

Handling

Format: Lyophilized

Reconstitution: 15 µL or 50 µL double distilled water (DDW), depending on the sample size.

Concentration: 1 mg/mL

Buffer: Reconstituted antibody contains phosphate buffered saline (PBS), pH 7.4, 1 % BSA, 0.05 % Sodium azide.

Preservative: Sodium azide

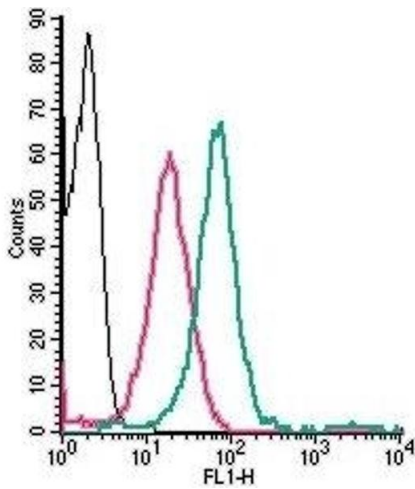
Precaution of Use: This product contains Sodium azide: a POISONOUS AND HAZARDOUS SUBSTANCE which should be handled by trained staff only.

Storage: RT, 4 °C, -20 °C

Storage Comment: Storage before reconstitution: The antibody ships as a lyophilized powder at room temperature. Upon arrival, it should be stored at -20°C.
Storage after reconstitution: The reconstituted solution can be stored at 4°C, protected from the light, for up to 1 week. For longer periods, small aliquots should be stored at -20°C. Avoid multiple freezing and thawing. Centrifuge all antibody preparations before use (10000 x g 5

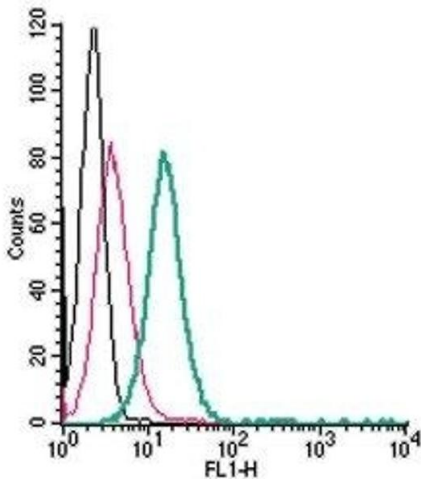
min).

Images



Flow Cytometry

Image 1. Cell surface detection of GPR68 in live intact human THP-1 monocytic leukemia cells: (black line) Cells.(red line) Cells + Rabbit IgG isotype control-FITC.(green line) Cells + Anti-GPR68 (OGR1) (extracellular) Antibody-FITC (ABIN7043171, ABIN7045538, ABIN7045539, ABIN7045540 and ABIN7045541), (2.5 µg).



Flow Cytometry

Image 2. Cell surface detection of GPR68 in live intact human HL-60 acute promyelocytic leukemia cells: (black line) Cells.(red line) Cells + Rabbit IgG isotype control-FITC.(green line) Cells + Anti-GPR68 (OGR1) (extracellular) Antibody-FITC (ABIN7043171, ABIN7045538, ABIN7045539, ABIN7045540 and ABIN7045541), (2.5 µg).