

Datasheet for ABIN7043178

anti-SLC6A1 antibody (2nd Extracellular Loop)**2** Images[Go to Product page](#)

Overview

Quantity:	25 µL
Target:	SLC6A1 (GAT1)
Binding Specificity:	2nd Extracellular Loop, AA 194-206
Reactivity:	Human, Rat, Mouse
Host:	Rabbit
Clonality:	Polyclonal
Conjugate:	This SLC6A1 antibody is un-conjugated
Application:	Western Blotting (WB), Immunohistochemistry (IHC), Immunofluorescence (IF)

Product Details

Immunogen:	Immunogen: Synthetic peptide
	Immunogen Sequence: (C)ERNMHQMTDGLDK, corresponding to amino acids residues 194-206 of rat GAT-1
Isotype:	IgG
Characteristics:	Anti-GABA Transporter 1 (GAT-1) (extracellular) Antibody (ABIN7043178, ABIN7044459 and ABIN7044460)) is a highly specific antibody directed against an epitope of the rat protein. The antibody can be used in western blot and immunohistochemistry applications. It has been designed to recognize GAT-1 from rat, mouse, and human samples.
Purification:	Affinity purified on immobilized antigen.

Target Details

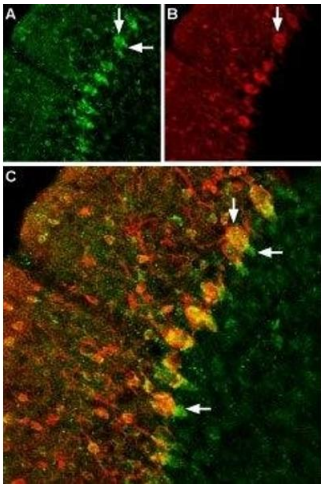
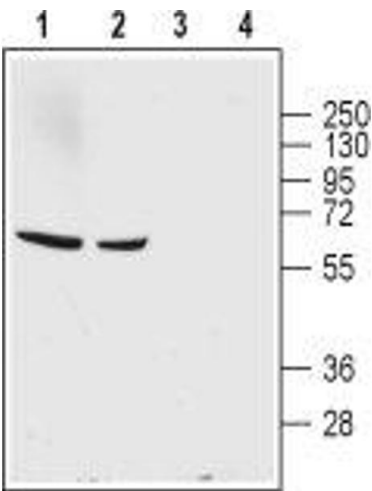
Target:	SLC6A1 (GAT1)
Alternative Name:	GABA Transporter 1 (GAT-1) (GAT1 Products)
Background:	Alternative names: GABA Transporter 1 (GAT-1), GABATR, GABT1, GABATHG, SLC6A1, Na ⁺ /Cl ⁻ -dependent GABA transporter 1
Gene ID:	79212
NCBI Accession:	NM_003042
UniProt:	P23978

Application Details

Application Notes:	Optimal working dilution should be determined by the investigator.
Restrictions:	For Research Use only

Handling

Format:	Lyophilized
Reconstitution:	25 µL, 50 µL or 0.2 mL double distilled water (DDW), depending on the sample size.
Concentration:	0.8 mg/mL
Buffer:	Reconstituted antibody contains phosphate buffered saline (PBS), pH 7.4, 1 % BSA, 0.05 % Sodium azide.
Preservative:	Sodium azide
Precaution of Use:	This product contains Sodium azide: a POISONOUS AND HAZARDOUS SUBSTANCE which should be handled by trained staff only.
Storage:	RT, 4 °C, -20 °C
Storage Comment:	<p>Storage before reconstitution: The antibody ships as a lyophilized powder at room temperature. Upon arrival, it should be stored at -20°C.</p> <p>Storage after reconstitution: The reconstituted solution can be stored at 4°C for up to 1 week. For longer periods, small aliquots should be stored at -20°C. Avoid multiple freezing and thawing. Centrifuge all antibody preparations before use (10000 x g 5 min).</p>



Western Blotting

Image 1. Western blot analysis of rat (lanes 1 and 3) and mouse (lanes 2 and 4) brain lysates: - 1,2. Anti-GABA Transporter 1 (GAT-1) (extracellular) Antibody (ABIN7043178, ABIN7044459 and ABIN7044460), (1:200).3,4. Anti-GABA Transporter 1 (GAT-1) (extracellular) Antibody, preincubated with GABA Transporter 1/GAT-1 (extracellular) Blocking Peptide (#BLP-GT001).

Immunohistochemistry

Image 2. Expression of GABATR in rat cerebellum - Immunohistochemical staining of rat cerebellum using Anti-GABA Transporter 1 (GAT-1) (extracellular) Antibody (ABIN7043178, ABIN7044459 and ABIN7044460), (1:200). A. GAT-1 staining is shown in green. B. Neurons expressing gamma amino butyric acid (GABA) were labeled with mouse Anti-parvalbumin (red). C. Merge of the two images demonstrates partial colocalization (arrows). GAT-1 appears both in the soma of Purkinje cells (vertical arrows) and in the pinceau (horizontal arrows).