

Datasheet for ABIN7043190

anti-GABRA6 antibody (Extracellular, N-Term)**3** Images[Go to Product page](#)

Overview

| | |
|----------------------|--|
| Quantity: | 50 µL |
| Target: | GABRA6 |
| Binding Specificity: | AA 20-37, Extracellular, N-Term |
| Reactivity: | Rat, Mouse |
| Host: | Rabbit |
| Clonality: | Polyclonal |
| Conjugate: | This GABRA6 antibody is un-conjugated |
| Application: | Western Blotting (WB), Immunohistochemistry (IHC), Immunocytochemistry (ICC), Immunofluorescence (IF), Live Cell Imaging (LCI) |

Product Details

| | |
|------------------|---|
| Immunogen: | Immunogen: Synthetic peptide Immunogen Sequence: QLEDEGNFYSENVSRILDN(C), corresponding to amino acid residues 20-37 of rat GABRA6 |
| Isotype: | IgG |
| Characteristics: | Anti-GABA(A) alpha6 Receptor (extracellular) Antibody is directed against an extracellular epitope of the rat GABA(A) α6 receptor. Anti-GABA(A) α6 Receptor (extracellular) Antibody (ABIN7043190, ABIN7044301 and ABIN7044302)) can be used in western blot, immunohistochemical and live cell imaging applications. It has been designed to recognize GABRA6 from rat, mouse and human samples. |
| Purification: | Affinity purified on immobilized antigen. |

Target Details

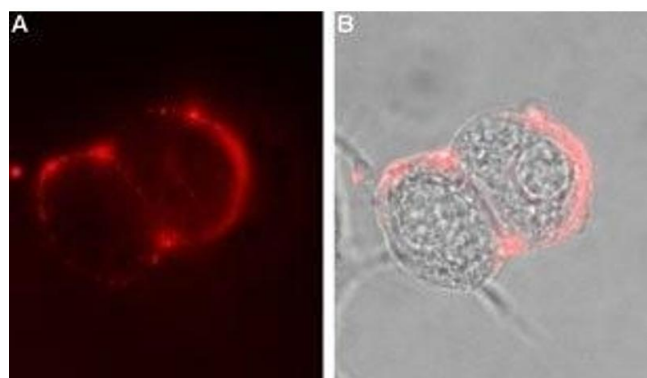
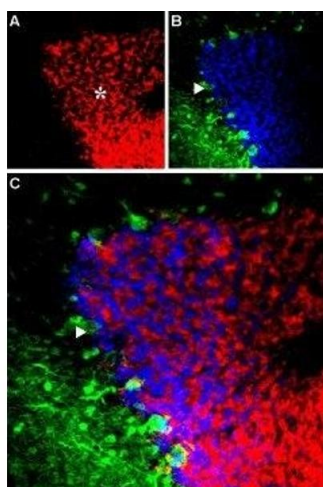
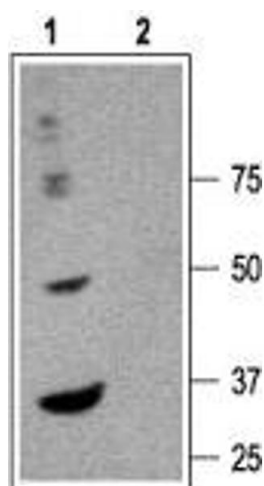
| | |
|-------------------|--|
| Target: | GABRA6 |
| Alternative Name: | GABA(A) alpha6 Receptor (GABRA6 Products) |
| Background: | Alternative names: GABA(A) alpha6 Receptor, gamma-Aminobutyric acid receptor type A subunit alpha6, GABRA6 |
| Gene ID: | 29708 |
| NCBI Accession: | NM_000811 |
| UniProt: | P30191 |
| Pathways: | Synaptic Membrane |

Application Details

| | |
|--------------------|--|
| Application Notes: | Optimal working dilution should be determined by the investigator. |
| Restrictions: | For Research Use only |

Handling

| | |
|--------------------|--|
| Format: | Lyophilized |
| Reconstitution: | 25 µL, 50 µL or 0.2 mL double distilled water (DDW), depending on the sample size. |
| Concentration: | 0.7 mg/mL |
| Buffer: | Reconstituted antibody contains phosphate buffered saline (PBS), pH 7.4, 1 % BSA, 0.05 % Sodium azide. |
| Preservative: | Sodium azide |
| Precaution of Use: | This product contains Sodium azide: a POISONOUS AND HAZARDOUS SUBSTANCE which should be handled by trained staff only. |
| Storage: | RT, 4 °C, -20 °C |
| Storage Comment: | <p>Storage before reconstitution: The antibody ships as a lyophilized powder at room temperature. Upon arrival, it should be stored at -20°C.</p> <p>Storage after reconstitution: The reconstituted solution can be stored at 4°C for up to 1 week. For longer periods, small aliquots should be stored at -20°C. Avoid multiple freezing and thawing. Centrifuge all antibody preparations before use (10000 x g 5 min).</p> |



Western Blotting

Image 1. Western blot analysis of rat brain membranes: -
1. Anti-GABA(A) $\alpha 6$ Receptor (extracellular) Antibody, (1:200). 2. Anti-GABA(A) $\alpha 6$ Receptor (extracellular) Antibody, preincubated with GABA(A) $\alpha 6$ Receptor (extracellular) Blocking Peptide (#BLP-GA004).

Immunohistochemistry

Image 2. Expression of GABRA6 in mouse cerebellum -
Immunohistochemical staining of mouse cerebellum using Anti-GABA(A) $\alpha 6$ Receptor (extracellular) Antibody (ABIN7043190, ABIN7044301 and ABIN7044302). A. GABRA6 (red) appears in the granule layer (asterisk). B. Parvalbumin (green) appears in Purkinje cells and in the molecular layer. C. Merge of GABRA6 and parvalbumin indicates that GABRA6 is restricted to granule cells. DAPI is used as the counterstain (blue).

Immunocytochemistry

Image 3. Expression of GABRA6 in rat PC12 cells - Cell surface detection of GABRA6 in intact living rat pheochromocytoma (PC12) cells. A. Extracellular staining of cells using Anti-GABA(A) $\alpha 6$ Receptor (extracellular) Antibody (ABIN7043190, ABIN7044301 and ABIN7044302), (1:100), (red). B. Merge of A with the live view of the cell.