

Datasheet for ABIN7043199

anti-Connexin 43/GJA1 antibody (C-Term, Intracellular)[Go to Product page](#)

4 Images

Overview

Quantity:	50 µL
Target:	Connexin 43/GJA1 (GJA1)
Binding Specificity:	AA 331-345, C-Term, Intracellular
Reactivity:	Human, Rat, Mouse
Host:	Guinea Pig
Clonality:	Polyclonal
Conjugate:	This Connexin 43/GJA1 antibody is un-conjugated
Application:	Western Blotting (WB), Immunohistochemistry (IHC), Immunofluorescence (IF)

Product Details

Immunogen:	Immunogen: Synthetic peptide Immunogen Sequence: (C)HAQPFDFPDDNQNSK, corresponding to amino acids residues 331-345 of human Connexin-43
Isotype:	IgG
Characteristics:	Guinea pig Anti-Connexin-43 Antibody (#), raised in guinea pigs, is a highly specific antibody directed against an epitope of the human protein. The antibody can be used in western blot and immunohistochemistry applications. It has been designed to recognize CX43 from mouse, rat and human samples. The antigen used to immunize guinea pigs is the same as Anti-Connexin-43 Antibody (ABIN7043198, ABIN7044079 and ABIN7044080) raised in rabbit. Our line of guinea pig antibodies enables more flexibility with our products such as multiplex staining studies, immunoprecipitation, etc.

Product Details

Purification: Affinity purified on immobilized antigen.

Target Details

Target: Connexin 43/GJA1 (GJA1)

Alternative Name: Connexin-43 ([GJA1 Products](#))

Background: Alternative names: CX43, Gap junction α 1 protein, GJA1, GJAL, Gap junction 43 kDa heart protein

Gene ID: 2697

NCBI Accession: [NM_000165](#)

UniProt: [P17302](#)

Pathways: [MAPK Signaling](#), [Myometrial Relaxation and Contraction](#), [Cell-Cell Junction Organization](#)

Application Details

Application Notes: Optimal working dilution should be determined by the investigator.

Restrictions: For Research Use only

Handling

Format: Lyophilized

Reconstitution: 25 μ L, 50 μ L or 0.2 mL double distilled water (DDW), depending on the sample size.

Concentration: 0.8 mg/mL

Buffer: Reconstituted antibody contains phosphate buffered saline (PBS), pH 7.4, 1 % BSA, 0.05 % Sodium azide.

Preservative: Sodium azide

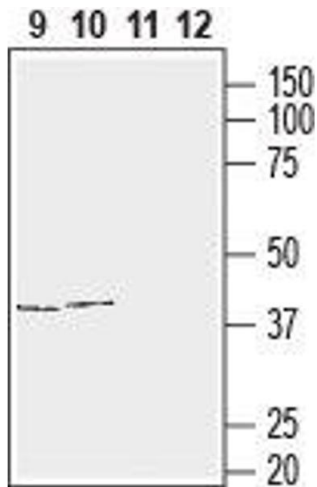
Precaution of Use: This product contains Sodium azide: a POISONOUS AND HAZARDOUS SUBSTANCE which should be handled by trained staff only.

Storage: RT, 4 °C, -20 °C

Storage Comment: Storage before reconstitution: The antibody ships as a lyophilized powder at room temperature. Upon arrival, it should be stored at -20°C.
Storage after reconstitution: The reconstituted solution can be stored at 4°C for up to 1 week. For longer periods, small aliquots should be stored at -20°C. Avoid multiple freezing and

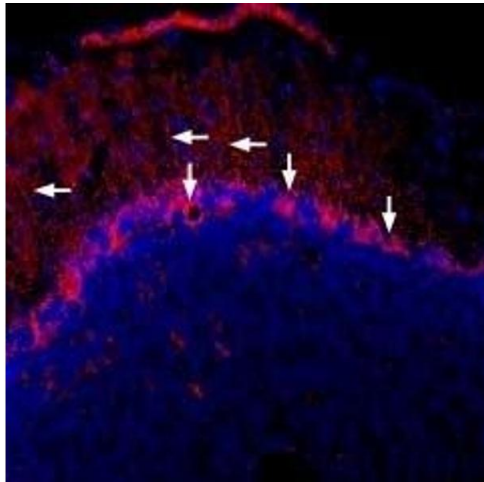
thawing. Centrifuge all antibody preparations before use (10000 x g 5 min).

Images



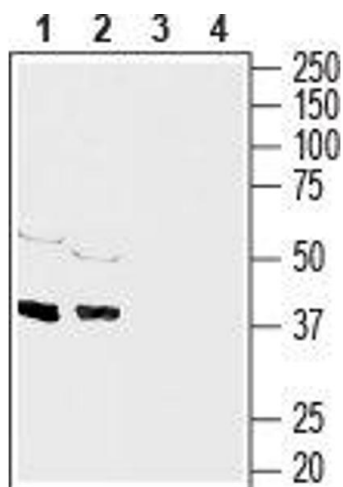
Western Blotting

Image 1. Western blot analysis of human T-cell leukemia (Jurkat) (lanes 9 and 11) and human neuroblastoma (SH-SY5Y) (lanes 10 and 12) cell line lysates: - 9,10. Guinea pig Anti-Connexin-43 Antibody (ABIN7043199, ABIN7045438 and ABIN7045439), (1:400). 11,12. Guinea pig Anti-Connexin-43 Antibody, preincubated with Connexin-43 Blocking Peptide (#BLP-CC201).



Immunohistochemistry

Image 2. Expression of Connexin-43 in mouse brain - Immunohistochemical staining of frozen mouse cerebellum free floating sections using Guinea pig Anti-Connexin-43 Antibody (ABIN7043199, ABIN7045438 and ABIN7045439). CX43 immunoreactivity (red) appears in the Purkinje layer (vertical arrows) and in puncta along dendritic processes (horizontal arrows). Nuclei are stained using DAPI as the counterstain (blue).



Western Blotting

Image 3. Western blot analysis of rat brain (lanes 1 and 3), (1:1000) and mouse brain (lanes 2 and 4), (1:200) membranes: - 1,2. Guinea pig Anti-Connexin-43 Antibody (ABIN7043199, ABIN7045438 and ABIN7045439). 3,4. Guinea pig Anti-Connexin-43 Antibody, preincubated with Connexin-43 Blocking Peptide (#BLP-CC201).

Please check the [product details page](#) for more images. Overall 4 images are available for ABIN7043199.