

Datasheet for ABIN7043203

**anti-GJB2 antibody (Cytoplasmic Loop, Intracellular)**[Go to Product page](#)**2** Images

## Overview

Quantity:	50 µL
Target:	GJB2
Binding Specificity:	AA 100-112, Cytoplasmic Loop, Intracellular
Reactivity:	Human, Mouse, Rat
Host:	Rabbit
Clonality:	Polyclonal
Conjugate:	This GJB2 antibody is un-conjugated
Application:	Western Blotting (WB), Immunohistochemistry (IHC), Immunofluorescence (IF), Immunocytochemistry (ICC)

## Product Details

Immunogen:	Immunogen: Synthetic peptide Immunogen Sequence: (C)HEKKRKFMKGEIK, corresponding to amino acid residues 100-112 of rat Connexin-26
Isotype:	IgG
Characteristics:	Anti-Connexin-26 (GJB2) Antibody (ABIN7043203, ABIN7044090 and ABIN7044091)) is a highly specific antibody directed against an epitope of the rat protein. The antibody can be used in western blot, immunohistochemistry, and immunocytochemistry applications. It has been designed to recognize Cx26 from human, rat, and mouse samples.
Purification:	Affinity purified on immobilized antigen.

## Target Details

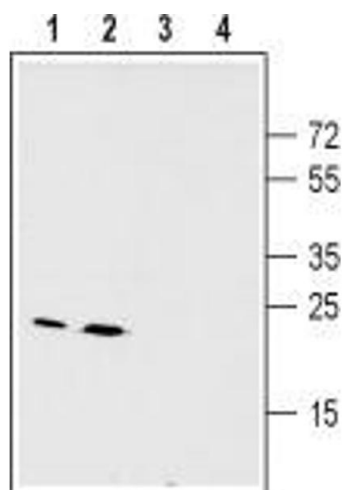
Target:	GJB2
Alternative Name:	Connexin-26 (GJB2) ( <a href="#">GJB2 Products</a> )
Background:	Alternative names: Connexin-26 (GJB2), CX26, Gap junction beta2 protein
Gene ID:	394266
NCBI Accession:	<a href="#">NM_004004</a>
UniProt:	<a href="#">P21994</a>
Pathways:	<a href="#">Sensory Perception of Sound</a> , <a href="#">Cell-Cell Junction Organization</a>

## Application Details

Application Notes:	Optimal working dilution should be determined by the investigator.
Restrictions:	For Research Use only

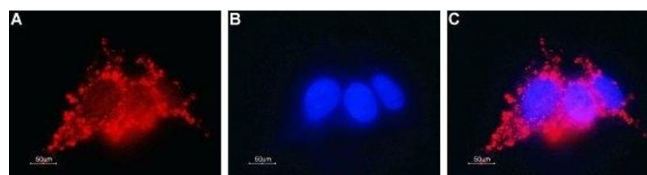
## Handling

Format:	Lyophilized
Reconstitution:	25 µL, 50 µL or 0.2 mL double distilled water (DDW), depending on the sample size.
Concentration:	0.8 mg/mL
Buffer:	Reconstituted antibody contains phosphate buffered saline (PBS), pH 7.4, 1 % BSA, 0.05 % Sodium azide.
Preservative:	Sodium azide
Precaution of Use:	This product contains Sodium azide: a POISONOUS AND HAZARDOUS SUBSTANCE which should be handled by trained staff only.
Storage:	RT, 4 °C, -20 °C
Storage Comment:	<p>Storage before reconstitution: The antibody ships as a lyophilized powder at room temperature. Upon arrival, it should be stored at -20°C.</p> <p>Storage after reconstitution: The reconstituted solution can be stored at 4°C for up to 1 week. For longer periods, small aliquots should be stored at -20°C. Avoid multiple freezing and thawing. Centrifuge all antibody preparations before use (10000 x g 5 min).</p>



### Western Blotting

**Image 1.** Western blot analysis of mouse (lanes 1 and 3) and rat (lanes 2 and 4) liver membranes: - 1,2. Anti-Connexin-26 (GJB2) Antibody (ABIN7043203, ABIN7044090 and ABIN7044091), (1:200).3,4. Anti-Connexin-26 (GJB2) Antibody, preincubated with Connexin-26/GJB2 Blocking Peptide (#BLP-CC212).



### Immunocytochemistry

**Image 2.** Expression of Connexin-26 in human HepG2 liver hepatocellular carcinoma cells - Immunocytochemical staining of fixed and permeabilized HepG2 liver hepatocellular carcinoma cells. A. Cells were stained with Anti-Connexin-26 (GJB2) Antibody (ABIN7043203, ABIN7044090 and ABIN7044091), (1:400), followed by goat anti-rabbit-AlexaFluor-594 secondary antibody (red). B. Cell nuclei were visualized using Hoechst 33342 (blue). C. Merge of the two images.