

Datasheet for ABIN7043204

## anti-Connexin 31 antibody (C-Term, Intracellular)



[Go to Product page](#)

### 1 Image

#### Overview

Quantity:	50 µL
Target:	Connexin 31 (GJB3)
Binding Specificity:	AA 216-228, C-Term, Intracellular
Reactivity:	Mouse, Rat
Host:	Rabbit
Clonality:	Polyclonal
Conjugate:	This Connexin 31 antibody is un-conjugated
Application:	Western Blotting (WB)

#### Product Details

Immunogen:	Immunogen: Synthetic peptide Immunogen Sequence: (C)EINKLLSEQDGSLK, corresponding to amino acid residues 216-228 of mouse Connexin-31
Isotype:	IgG
Cross-Reactivity (Details):	Not recommended for human samples.
Characteristics:	Anti-Connexin-31 (GJB3) Antibody (ABIN7043204, ABIN7044092 and ABIN7044093)) is a highly specific antibody directed against an epitope of the mouse protein. The antibody can be used in western blot analysis. It has been designed to recognize Cx31 from rat and mouse samples. It will unlikely recognize the protein from human samples.
Purification:	Affinity purified on immobilized antigen.

### Target Details

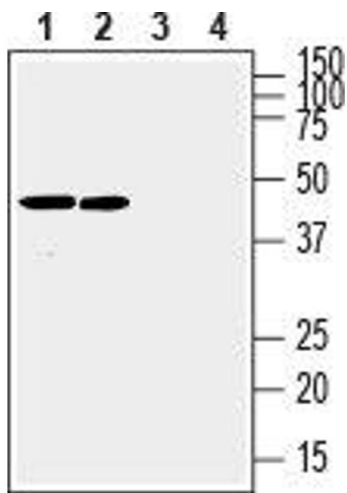
Target:	Connexin 31 (GJB3)
Alternative Name:	Connexin-31 (GJB3) ( <a href="#">GJB3 Products</a> )
Background:	Alternative names: Connexin-31 (GJB3), CX31, Gap junction beta3 protein
Gene ID:	14620
NCBI Accession:	<a href="#">NM_024009</a>
UniProt:	<a href="#">P28231</a>
Pathways:	<a href="#">Sensory Perception of Sound</a>

### Application Details

Application Notes:	Optimal working dilution should be determined by the investigator.
Restrictions:	For Research Use only

### Handling

Format:	Lyophilized
Reconstitution:	25 µL, 50 µL or 0.2 mL double distilled water (DDW), depending on the sample size.
Concentration:	0.8 mg/mL
Buffer:	Reconstituted antibody contains phosphate buffered saline (PBS), pH 7.4, 1 % BSA, 0.05 % Sodium azide.
Preservative:	Sodium azide
Precaution of Use:	This product contains Sodium azide: a POISONOUS AND HAZARDOUS SUBSTANCE which should be handled by trained staff only.
Storage:	RT,4 °C,-20 °C
Storage Comment:	<p>Storage before reconstitution: The antibody ships as a lyophilized powder at room temperature. Upon arrival, it should be stored at -20°C.</p> <p>Storage after reconstitution: The reconstituted solution can be stored at 4°C for up to 1 week. For longer periods, small aliquots should be stored at -20°C. Avoid multiple freezing and thawing. Centrifuge all antibody preparations before use (10000 x g 5 min).</p>



Western Blotting

**Image 1.** Western blot analysis of rat (lanes 1 and 3) and mouse (lanes 2 and 4) brain membranes: - 1,2. Anti-Connexin-31 (GJB3) Antibody (ABIN7043204, ABIN7044092 and ABIN7044093), (1:200).3,4. Anti-Connexin-31 (GJB3) Antibody, preincubated with Connexin-31/GJB3 Blocking Peptide (#BLP-CC213).