

Datasheet for ABIN7043207
anti-GJC1 antibody (Intracellular)

3 Images

[Go to Product page](#)

Overview

Quantity:	25 µL
Target:	GJC1
Binding Specificity:	AA 153-166, Intracellular
Reactivity:	Human, Mouse, Rat
Host:	Rabbit
Clonality:	Polyclonal
Conjugate:	This GJC1 antibody is un-conjugated
Application:	Western Blotting (WB), Immunohistochemistry (IHC), Immunofluorescence (IF)

Product Details

Immunogen:	Immunogen: Synthetic peptide Immunogen Sequence: (C)KEQSQPKPKHDGRR, corresponding to amino acid residues 153-166 of rat Connexin-45
Isotype:	IgG
Characteristics:	Anti-Connexin-45 (GJC1) Antibody is directed against an epitope of rat Connexin-45. Anti-Connexin-45 (GJC1) Antibody (ABIN7043207, ABIN7044085 and ABIN7044086)) can be used in western blot and immunohistochemistry applications. It has been designed to recognize Cx45 from human, rat and mouse samples.
Purification:	Affinity purified on immobilized antigen.

Target Details

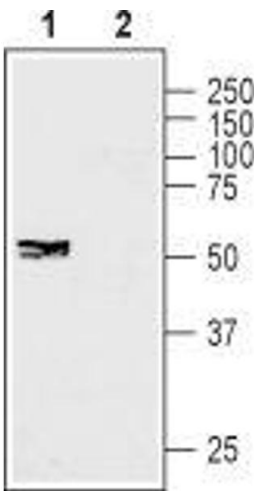
Target:	GJC1
Alternative Name:	Connexin-45 (GJC1) (GJC1 Products)
Background:	Alternative names: Connexin-45 (GJC1), CX45, Gap junction gamma1 protein, Gap junction alpha7 protein, GJA7
Gene ID:	266706
NCBI Accession:	NM_005497
UniProt:	A4GG66
Pathways:	Cell-Cell Junction Organization

Application Details

Application Notes:	Optimal working dilution should be determined by the investigator.
Restrictions:	For Research Use only

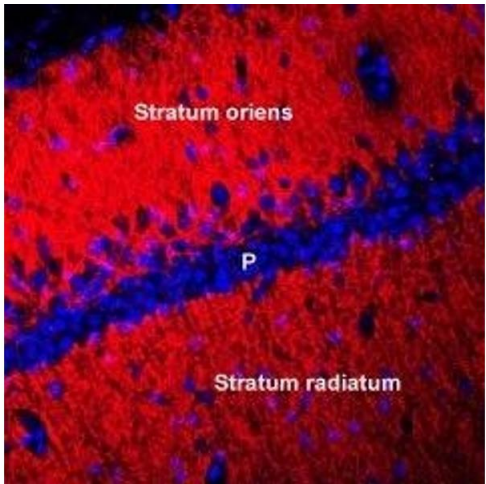
Handling

Format:	Lyophilized
Reconstitution:	25 µL, 50 µL or 0.2 mL double distilled water (DDW), depending on the sample size.
Concentration:	0.8 mg/mL
Buffer:	Reconstituted antibody contains phosphate buffered saline (PBS), pH 7.4, 1 % BSA, 0.05 % Sodium azide.
Preservative:	Sodium azide
Precaution of Use:	This product contains Sodium azide: a POISONOUS AND HAZARDOUS SUBSTANCE which should be handled by trained staff only.
Storage:	RT, 4 °C, -20 °C
Storage Comment:	<p>Storage before reconstitution: The antibody ships as a lyophilized powder at room temperature. Upon arrival, it should be stored at -20°C.</p> <p>Storage after reconstitution: The reconstituted solution can be stored at 4°C for up to 1 week. For longer periods, small aliquots should be stored at -20°C. Avoid multiple freezing and thawing. Centrifuge all antibody preparations before use (10000 x g 5 min).</p>



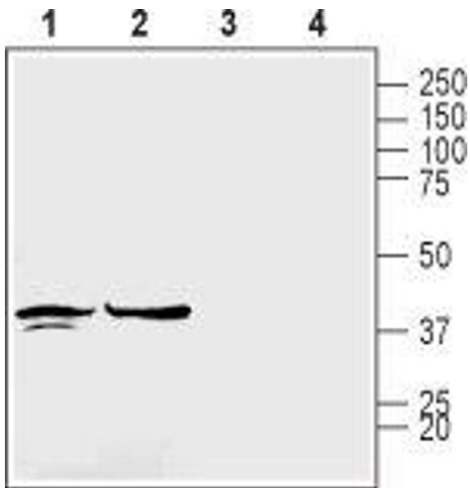
Western Blotting

Image 1. Western blot analysis of human SH-SY5Y neuroblastoma cell lysate: - 1. Anti-Connexin-45 (GJC1) Antibody (ABIN7043207, ABIN7044085 and ABIN7044086), (1:200). 2. Anti-Connexin-45 (GJC1) Antibody, preincubated with Connexin-45/GJC1 Blocking Peptide (#BLP-CC207).



Immunohistochemistry

Image 2. Expression of Connexin-45 in rat hippocampus - Immunohistochemical staining of perfusion-fixed frozen mouse brain sections using Anti-Connexin-45 (GJC1) Antibody (ABIN7043207, ABIN7044085 and ABIN7044086), (1:400), followed by anti-rabbit-Cy3 antibody. Cx45 staining (red) appears in the neuropil of layers stratum oriens and stratum radiatum but not in the pyramidal layer. Nuclei are stained with DAPI (blue).



Western Blotting

Image 3. Western blot analysis of rat brain membranes (lanes 1 and 3) and mouse brain lysates (lanes 2 and 4): - 1,2. Anti-Connexin-45 (GJC1) Antibody (ABIN7043207, ABIN7044085 and ABIN7044086), (1:200). 3,4. Anti-Connexin-45 (GJC1) Antibody, preincubated with Connexin-45/GJC1 Blocking Peptide (#BLP-CC207).