

Datasheet for ABIN7043209  
**anti-GIPR antibody (Extracellular, N-Term)**[Go to Product page](#)

## 2 Images

## Overview

Quantity:	25 µL
Target:	GIPR
Binding Specificity:	AA 25-38, Extracellular, N-Term
Reactivity:	Mouse, Rat
Host:	Rabbit
Clonality:	Polyclonal
Conjugate:	This GIPR antibody is un-conjugated
Application:	Western Blotting (WB), Immunohistochemistry (IHC), Immunofluorescence (IF)

## Product Details

Immunogen:	Immunogen: Synthetic peptide Immunogen Sequence: (C)EGQTTGELYQRWER,corresponding to amino acid residues 25-38 of rat GIPR
Isotype:	IgG
Characteristics:	Anti-GIPR (extracellular) Antibody (ABIN7043209, ABIN7044412 and ABIN7044413)) is a highly specific antibody directed against an epitope of the rat Gastric inhibitory polypeptide receptor. The antibody can be used in western blot and immunohistochemistry applications. The antibody recognizes an extracellular epitope and can potentially detect the receptor in living cells. It has been designed to recognize GIPR from rat, human, and mouse samples.
Purification:	Affinity purified on immobilized antigen.

## Target Details

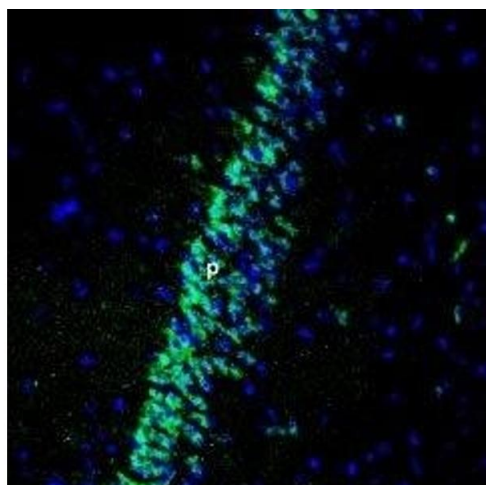
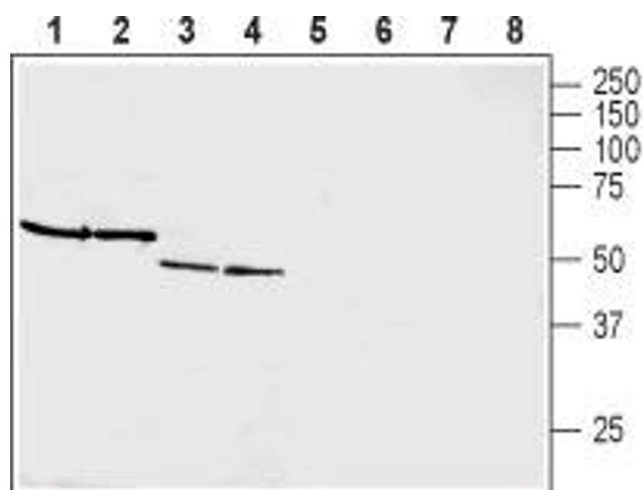
Target:	GIPR
Alternative Name:	GIPR ( <a href="#">GIPR Products</a> )
Background:	Alternative names: GIPR, Gastric inhibitory polypeptide receptor, GIP receptor, Glucose-dependent insulintropic polypeptide receptor
Gene ID:	25024
NCBI Accession:	<a href="#">NM_000164</a>
UniProt:	<a href="#">P43219</a>
Pathways:	<a href="#">Positive Regulation of Peptide Hormone Secretion</a> , <a href="#">cAMP Metabolic Process</a> , <a href="#">Regulation of G-Protein Coupled Receptor Protein Signaling</a>

## Application Details

Application Notes:	Optimal working dilution should be determined by the investigator.
Restrictions:	For Research Use only

## Handling

Format:	Lyophilized
Reconstitution:	25 µL, 50 µL or 0.2 mL double distilled water (DDW), depending on the sample size.
Concentration:	0.8 mg/mL
Buffer:	Reconstituted antibody contains phosphate buffered saline (PBS), pH 7.4, 1 % BSA, 0.05 % Sodium azide.
Preservative:	Sodium azide
Precaution of Use:	This product contains Sodium azide: a POISONOUS AND HAZARDOUS SUBSTANCE which should be handled by trained staff only.
Storage:	RT, 4 °C, -20 °C
Storage Comment:	<p>Storage before reconstitution: The antibody ships as a lyophilized powder at room temperature. Upon arrival, it should be stored at -20°C.</p> <p>Storage after reconstitution: The reconstituted solution can be stored at 4°C for up to 1 week. For longer periods, small aliquots should be stored at -20°C. Avoid multiple freezing and thawing. Centrifuge all antibody preparations before use (10000 x g 5 min).</p>



### Western Blotting

**Image 1.** Western blot analysis of rat brain membranes (lanes 1 and 5), mouse brain membranes (lanes 2 and 6), rat pancreas membranes (lanes 3 and 7) and mouse heart membranes (lanes 4 and 8): - 1-4. Anti-GIPR (extracellular) Antibody (ABIN7043209, ABIN7044412 and ABIN7044413), (1:200). 5-8. Anti-GIPR (extracellular) Antibody, preincubated with GIPR (extracellular) Blocking Peptide (#BLP-GR025).

### Immunohistochemistry

**Image 2.** Expression of Gastric inhibitory polypeptide receptor in rat hippocampus - Immunohistochemical staining of perfusion-fixed frozen rat brain sections using Anti-GIPR (extracellular) Antibody (ABIN7043209, ABIN7044412 and ABIN7044413), (1:400), followed by anti-rabbit-Alexa-488 antibody. GIPR is expressed (green) in the pyramidal layer (P) of the CA1 rat hippocampal region. Nuclei are labeled with DAPI (blue).