

Datasheet for ABIN7043214  
**anti-Gephyrin antibody (Intracellular)**

## 2 Images

[Go to Product page](#)

## Overview

Quantity:	25 µL
Target:	Gephyrin (GPHN)
Binding Specificity:	AA 183-195, Intracellular
Reactivity:	Human, Mouse, Rat
Host:	Rabbit
Clonality:	Polyclonal
Conjugate:	This Gephyrin antibody is un-conjugated
Application:	Western Blotting (WB), Immunohistochemistry (IHC), Immunofluorescence (IF)

## Product Details

Immunogen:	Immunogen: Synthetic peptide Immunogen Sequence: (C)RDAIVKVKEVHDE, corresponding to amino acid residues 183-195 of rat Gephyrin
Isotype:	IgG
Characteristics:	Anti-Gephyrin Antibody is directed against an epitope of rat Gephyrin. Anti-Gephyrin Antibody (ABIN7043214, ABIN7044520 and ABIN7044521)) can be used in western blot and immunohistochemistry applications. It has been designed to recognize GPHN from rat, mouse, and human samples.
Purification:	Affinity purified on immobilized antigen.

## Target Details

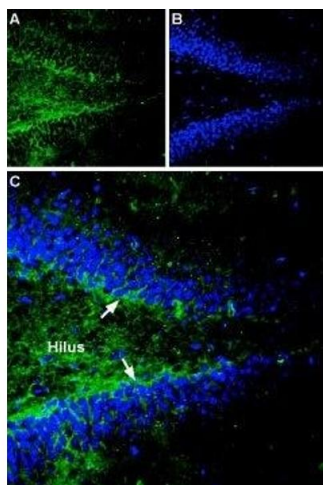
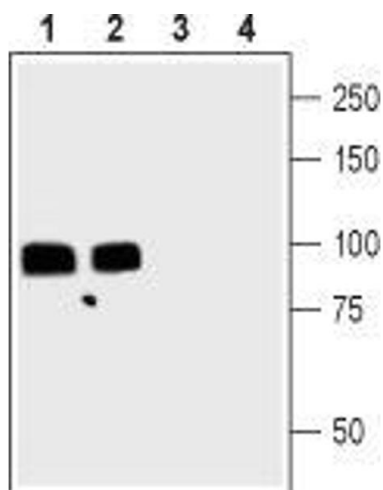
Target:	Gephyrin (GPHN)
Alternative Name:	Gephyrin ( <a href="#">GPHN Products</a> )
Background:	Alternative names: Gephyrin, GPHN, Putative glycine receptor-tubulin linker protein, MPT adenylyltransferase, MPT Mo-transferase
Gene ID:	69194
NCBI Accession:	<a href="#">NM_020806</a>
UniProt:	<a href="#">Q03555</a>
Pathways:	<a href="#">Synaptic Membrane</a> , <a href="#">Skeletal Muscle Fiber Development</a>

## Application Details

Application Notes:	Optimal working dilution should be determined by the investigator.
Restrictions:	For Research Use only

## Handling

Format:	Lyophilized
Reconstitution:	25 µL, 50 µL or 0.2 mL double distilled water (DDW), depending on the sample size.
Concentration:	0.85 mg/mL
Buffer:	Reconstituted antibody contains phosphate buffered saline (PBS), pH 7.4, 1 % BSA, 0.05 % Sodium azide.
Preservative:	Sodium azide
Precaution of Use:	This product contains Sodium azide: a POISONOUS AND HAZARDOUS SUBSTANCE which should be handled by trained staff only.
Storage:	RT, 4 °C, -20 °C
Storage Comment:	<p>Storage before reconstitution: The antibody ships as a lyophilized powder at room temperature. Upon arrival, it should be stored at -20°C.</p> <p>Storage after reconstitution: The reconstituted solution can be stored at 4°C for up to 1 week. For longer periods, small aliquots should be stored at -20°C. Avoid multiple freezing and thawing. Centrifuge all antibody preparations before use (10000 x g 5 min).</p>



### Western Blotting

**Image 1.** Western blot analysis of rat (lanes 1 and 3) and mouse (lanes 2 and 4) brain lysates: - 1,2. Anti-Gephyrin Antibody (ABIN7043214, ABIN7044520 and ABIN7044521), (1:200).3,4. Anti-Gephyrin Antibody, preincubated with Gephyrin Blocking Peptide (#BLP-IP005).

### Immunohistochemistry

**Image 2.** Expression of Gephyrin in rat hippocampus - Immunohistochemical staining of rat hippocampal dentate gyrus sections using Anti-Gephyrin Antibody (ABIN7043214, ABIN7044520 and ABIN7044521). A. Gephyrin staining (green) appears in hilus of the dentate gyrus (arrows). B. Nuclear staining using DAPI as the counterstain (blue). C. Merge image of panel A and B.