

Datasheet for ABIN7043215
anti-GIPC1 antibody (Intracellular, N-Term)[Go to Product page](#)

3 Images

Overview

Quantity:	50 µL
Target:	GIPC1
Binding Specificity:	AA 10-24, Intracellular, N-Term
Reactivity:	Human, Mouse, Rat
Host:	Rabbit
Clonality:	Polyclonal
Conjugate:	This GIPC1 antibody is un-conjugated
Application:	Western Blotting (WB), Immunohistochemistry (IHC), Immunofluorescence (IF)

Product Details

Immunogen:	Immunogen: Synthetic peptide Immunogen Sequence: (C)KAPPLVENEEAEPGR, corresponding to amino acid residues 10-24 of human GIPC1
Isotype:	IgG
Characteristics:	Anti-GIPC1 Antibody (ABIN7043215, ABIN7045188 and ABIN7045189)) is a highly specific antibody directed against an epitope of the human protein. The antibody can be used in western blot and immunohistochemistry applications. It has been designed to recognize GIPC1 from human, rat, and mouse samples.
Purification:	Affinity purified on immobilized antigen.

Target Details

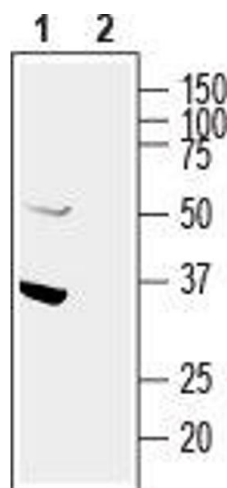
Target:	GIPC1
Alternative Name:	GIPC1 (GIPC1 Products)
Background:	Alternative names: GIPC1, PDZ domain-containing protein GIPC1, GIPC, GAIP C-terminus-interacting protein, RGS-GAIP-interacting protein, Synectin, NIP, TIP-2
Gene ID:	10755
NCBI Accession:	NM_005716
UniProt:	O14908
Pathways:	Dicarboxylic Acid Transport

Application Details

Application Notes:	Optimal working dilution should be determined by the investigator.
Restrictions:	For Research Use only

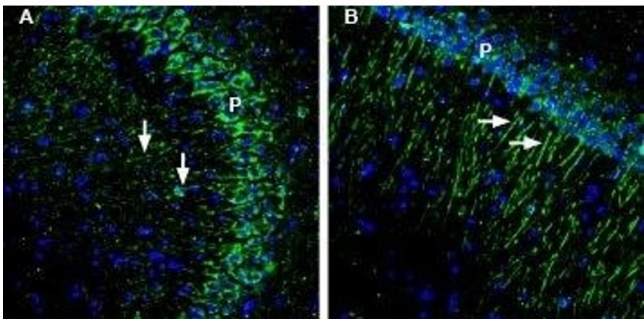
Handling

Format:	Lyophilized
Reconstitution:	25 µL, 50 µL or 0.2 mL double distilled water (DDW), depending on the sample size.
Concentration:	0.8 mg/mL
Buffer:	Reconstituted antibody contains phosphate buffered saline (PBS), pH 7.4, 1 % BSA, 0.05 % Sodium azide.
Preservative:	Sodium azide
Precaution of Use:	This product contains Sodium azide: a POISONOUS AND HAZARDOUS SUBSTANCE which should be handled by trained staff only.
Storage:	RT, 4 °C, -20 °C
Storage Comment:	<p>Storage before reconstitution: The antibody ships as a lyophilized powder at room temperature. Upon arrival, it should be stored at -20°C.</p> <p>Storage after reconstitution: The reconstituted solution can be stored at 4°C for up to 1 week. For longer periods, small aliquots should be stored at -20°C. Avoid multiple freezing and thawing. Centrifuge all antibody preparations before use (10000 x g 5 min).</p>



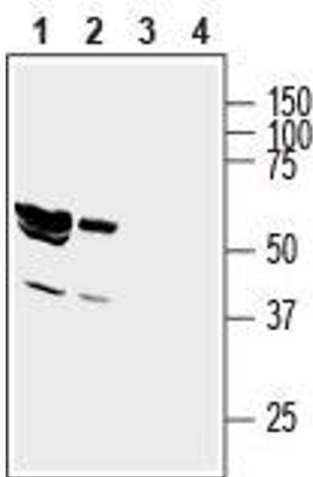
Western Blotting

Image 1. Western blot analysis of human U87-MG glioblastoma cell line lysate: - 1. Anti-GIPC1 Antibody (ABIN7043215, ABIN7045188 and ABIN7045189), (1:400).2. Anti-GIPC1 Antibody, preincubated with GIPC1 Blocking Peptide (#BLP-PZ045).



Immunohistochemistry

Image 2. Expression of GIPC1 in mouse and rat hippocampus - Immunohistochemical staining of perfusion-fixed frozen mouse and rat brain sections with Anti-GIPC1 Antibody (ABIN7043215, ABIN7045188 and ABIN7045189), (1:200), followed by goat-anti-rabbit-AlexaFluor-488. A. In mouse brain GIPC1 staining (green) appears in neurons of the pyramidal layer (P) and their apical dendrites (arrows). B. In rat brain similar staining is observed. Cell nuclei are stained with DAPI (blue).



Western Blotting

Image 3. Western blot analysis of rat brain lysate (lanes 1 and 3) and mouse brain membranes (lanes 2 and 4): - 1,2. Anti-GIPC1 Antibody (ABIN7043215, ABIN7045188 and ABIN7045189), (1:400).3,4. Anti-GIPC1 Antibody, preincubated with GIPC1 Blocking Peptide (#BLP-PZ045).