

Datasheet for ABIN7043219

**anti-GLP1R antibody (2nd Extracellular Loop)**

## 4 Images

[Go to Product page](#)

## Overview

Quantity:	50 µL
Target:	GLP1R
Binding Specificity:	2nd Extracellular Loop, AA 288-301
Reactivity:	Human, Mouse, Rat
Host:	Rabbit
Clonality:	Polyclonal
Conjugate:	This GLP1R antibody is un-conjugated
Application:	Western Blotting (WB), Immunohistochemistry (IHC), Immunofluorescence (IF), Immunocytochemistry (ICC), Live Cell Imaging (LCI)

## Product Details

Immunogen:	Immunogen: Synthetic peptide Immunogen Sequence: (C)KYLYEDEG(S)WTRNS, corresponding to amino acid residues 288-301 of rat GLP1R
Isotype:	IgG
Characteristics:	Anti-GLP1R (extracellular) Antibody (ABIN7043219, ABIN7044406 and ABIN7044407)) is a highly specific antibody directed against an epitope of the rat glucagon-like peptide 1 receptor. The antibody can be used in western blot, immunohistochemistry, immunocytochemistry, and live cell imaging applications. It has been designed to recognize GLP1R from human, rat, and mouse samples.
Purification:	Affinity purified on immobilized antigen.

## Target Details

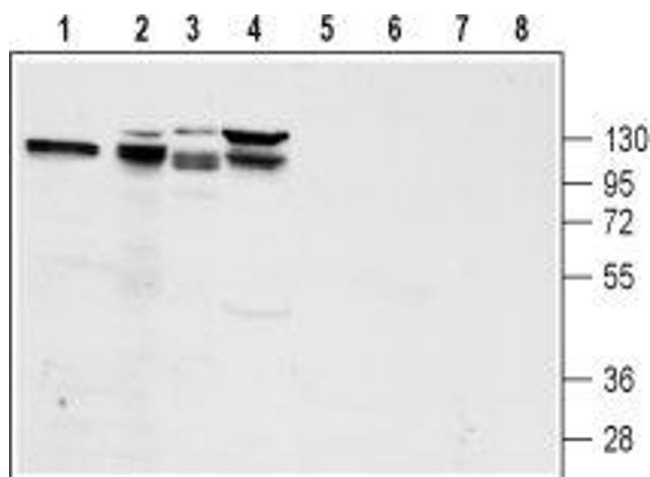
Target:	GLP1R
Alternative Name:	GLP1R ( <a href="#">GLP1R Products</a> )
Background:	Alternative names: GLP1R, Glucagon-like peptide 1 receptor, GLP-1 receptor
Gene ID:	25021
NCBI Accession:	<a href="#">NM_002062</a>
UniProt:	<a href="#">P32301</a>
Pathways:	<a href="#">Positive Regulation of Peptide Hormone Secretion</a> , <a href="#">Hormone Transport</a> , <a href="#">cAMP Metabolic Process</a> , <a href="#">Feeding Behaviour</a>

## Application Details

Application Notes:	Optimal working dilution should be determined by the investigator.
Restrictions:	For Research Use only

## Handling

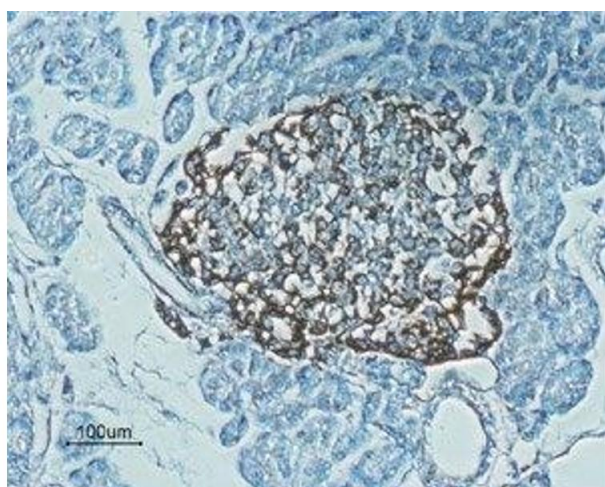
Format:	Lyophilized
Reconstitution:	25 µL, 50 µL or 0.2 mL double distilled water (DDW), depending on the sample size.
Concentration:	0.8 mg/mL
Buffer:	Reconstituted antibody contains phosphate buffered saline (PBS), pH 7.4, 1 % BSA, 0.05 % Sodium azide.
Preservative:	Sodium azide
Precaution of Use:	This product contains Sodium azide: a POISONOUS AND HAZARDOUS SUBSTANCE which should be handled by trained staff only.
Storage:	RT, 4 °C, -20 °C
Storage Comment:	<p>Storage before reconstitution: The antibody ships as a lyophilized powder at room temperature. Upon arrival, it should be stored at -20°C.</p> <p>Storage after reconstitution: The reconstituted solution can be stored at 4°C for up to 1 week. For longer periods, small aliquots should be stored at -20°C. Avoid multiple freezing and thawing. Centrifuge all antibody preparations before use (10000 x g 5 min).</p>



### Western Blotting

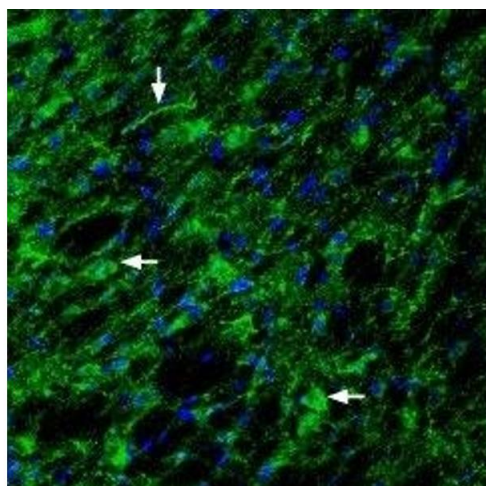
**Image 1.** Western blot analysis of rat pancreas lysate (lanes 1 and 5), mouse preadipocyte 3T3-L1 lysate (lanes 2 and 6), rat pancreatic islet cell line RIN-5F lysate (lanes 3 and 7) and human pancreatic carcinoma PANC-1 lysate (lanes 4 and 8):

- 1-4. Anti-GLP1R (extracellular) Antibody (ABIN7043219, ABIN7044406 and ABIN7044407), (1:200).
- 5-8. Anti-GLP1R (extracellular) Antibody, preincubated with GLP1R (extracellular) Blocking Peptide (#BLP-GR021).



### Immunohistochemistry

**Image 2.** Expression of Glucagon-like peptide 1 receptor in rat pancreas - Immunohistochemical staining of rat pancreas paraffin embedded sections using Anti-GLP1R (extracellular) Antibody (ABIN7043219, ABIN7044406 and ABIN7044407), (1:100). Staining (brown color) is present in endocrine cells of the Isles of Langerhans. Hematoxylin is used as the counterstain.



### Immunohistochemistry

**Image 3.** Expression of Glucagon-like peptide 1 receptor in rat hypothalamus - Immunohistochemical staining of rat hypothalamus with Anti-GLP1R (extracellular) Antibody (ABIN7043219, ABIN7044406 and ABIN7044407), (1:200). Glucagon-like peptide 1 receptor (green) appears in the lateral hypothalamic region axonal profiles (vertical arrow) and nerve cell profiles (horizontal arrows). DAPI is used as the counterstain (blue).

Please check the [product details page](#) for more images. Overall 4 images are available for ABIN7043219.