

Datasheet for ABIN7043221  
**anti-GLP2R antibody (1st Extracellular Loop)**[Go to Product page](#)

## 2 Images

## Overview

Quantity:	50 µL
Target:	GLP2R
Binding Specificity:	1st Extracellular Loop, AA 241-255
Reactivity:	Rat
Host:	Rabbit
Clonality:	Polyclonal
Conjugate:	This GLP2R antibody is un-conjugated
Application:	Western Blotting (WB), Immunohistochemistry (IHC), Immunofluorescence (IF)

## Product Details

Immunogen:	Immunogen: Synthetic peptide Immunogen Sequence: (C)KRPDDESGWMSYLSE, corresponding to amino acid residues 241-255 of rat GLP2R
Isotype:	IgG
Characteristics:	Anti-GLP2R (extracellular) Antibody (ABIN7043221, ABIN7044408 and ABIN7044409)) is a highly specific antibody directed against an epitpe of the rat glucagon-like peptide 2 receptor. The antibody can be used in western blot and immunohistochemistry applications. It has been designed to recognize GLP2R from human, rat, and mouse samples.
Purification:	Affinity purified on immobilized antigen.

## Target Details

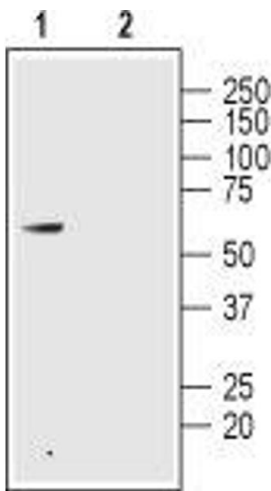
Target:	GLP2R
Alternative Name:	GLP2R ( <a href="#">GLP2R Products</a> )
Background:	Alternative names: GLP2R, Glucagon-like peptide 2 receptor, GLP2 receptor
Gene ID:	60432
NCBI Accession:	<a href="#">NM_004246</a>
UniProt:	<a href="#">Q9Z0W0</a>
Pathways:	<a href="#">Positive Regulation of Peptide Hormone Secretion</a> , <a href="#">Peptide Hormone Metabolism</a> , <a href="#">cAMP Metabolic Process</a> , <a href="#">Feeding Behaviour</a>

## Application Details

Application Notes:	Optimal working dilution should be determined by the investigator.
Restrictions:	For Research Use only

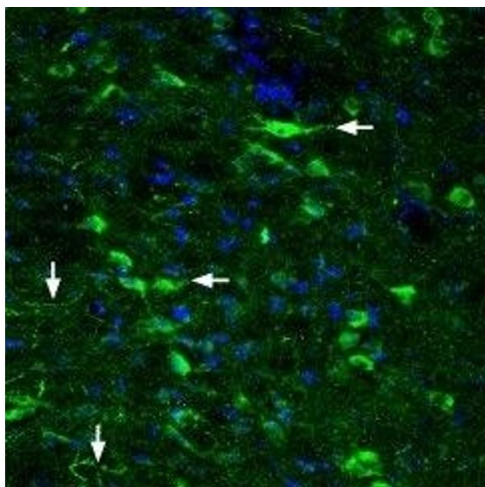
## Handling

Format:	Lyophilized
Reconstitution:	25 µL, 50 µL or 0.2 mL double distilled water (DDW), depending on the sample size.
Concentration:	0.8 mg/mL
Buffer:	Reconstituted antibody contains phosphate buffered saline (PBS), pH 7.4, 1 % BSA, 0.05 % Sodium azide.
Preservative:	Sodium azide
Precaution of Use:	This product contains Sodium azide: a POISONOUS AND HAZARDOUS SUBSTANCE which should be handled by trained staff only.
Storage:	RT, 4 °C, -20 °C
Storage Comment:	<p>Storage before reconstitution: The antibody ships as a lyophilized powder at room temperature. Upon arrival, it should be stored at -20°C.</p> <p>Storage after reconstitution: The reconstituted solution can be stored at 4°C for up to 1 week. For longer periods, small aliquots should be stored at -20°C. Avoid multiple freezing and thawing. Centrifuge all antibody preparations before use (10000 x g 5 min).</p>



### Western Blotting

**Image 1.** Western blot analysis of rat colon lysate: - 1. Anti-GLP2R (extracellular) Antibody (ABIN7043221, ABIN7044408 and ABIN7044409), (1:200). 2. Anti-GLP2R (extracellular) Antibody, preincubated with GLP2R (extracellular) Blocking Peptide (#BLP-GR022).



### Immunohistochemistry

**Image 2.** Expression of Glucagon-like peptide 2 receptor in rat hypothalamus - Immunohistochemical staining of rat hypothalamus with Anti-GLP2R (extracellular) Antibody (ABIN7043221, ABIN7044408 and ABIN7044409), (1:200). Glucagon-like peptide 2 receptor (green) appears in the lateral hypothalamic region axonal profiles (vertical white arrow) and nerve cell profiles (horizontal white arrows) were labeled. DAPI is used as the counterstain (blue).