

Datasheet for ABIN7043245  
**anti-Metabotropic Glutamate Receptor 1 antibody**  
**(Extracellular, N-Term)**

[Go to Product page](#)**5** Images

## Overview

Quantity:	25 µL
Target:	Metabotropic Glutamate Receptor 1 (GRM1)
Binding Specificity:	AA 501-516, Extracellular, N-Term
Reactivity:	Human, Rat, Mouse
Host:	Rabbit
Clonality:	Polyclonal
Conjugate:	This Metabotropic Glutamate Receptor 1 antibody is un-conjugated
Application:	Western Blotting (WB), Immunocytochemistry (ICC), Immunoprecipitation (IP), Immunofluorescence (IF), Flow Cytometry (FACS), Live Cell Imaging (LCI)

## Product Details

Immunogen:	Immunogen: Synthetic peptide Immunogen Sequence: (C)HEGVLNIDDYKIQMNK, corresponding to amino acids 501-516 of rat mGluR1
Isotype:	IgG
Characteristics:	Anti-mGluR1 (extracellular) Antibody (ABIN7043245, ABIN7044330 and ABIN7044331)) is a highly specific antibody directed against the extracellular N-terminus domain of rat mGluR1. The antibody can be used in western blot and immunocytochemistry applications, and recognizes mGluR1 in rat, mouse and human samples.
Purification:	Affinity purified on immobilized antigen.

## Target Details

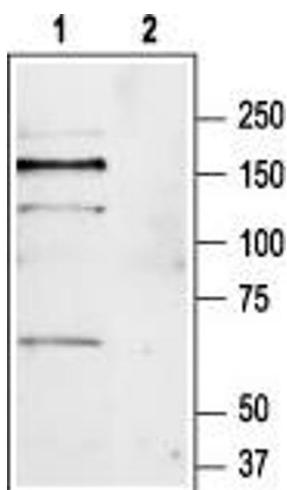
Target:	Metabotropic Glutamate Receptor 1 (GRM1)
Alternative Name:	mGluR1 ( <a href="#">GRM1 Products</a> )
Background:	Alternative names: mGluR1, Metabotropic glutamate receptor 1, GRM1, mGlu1, GPRC1a, PPP1R85, SCAR13
Gene ID:	24414
NCBI Accession:	<a href="#">NM_000838</a>
UniProt:	<a href="#">P23385</a>

## Application Details

Application Notes:	Optimal working dilution should be determined by the investigator.
Restrictions:	For Research Use only

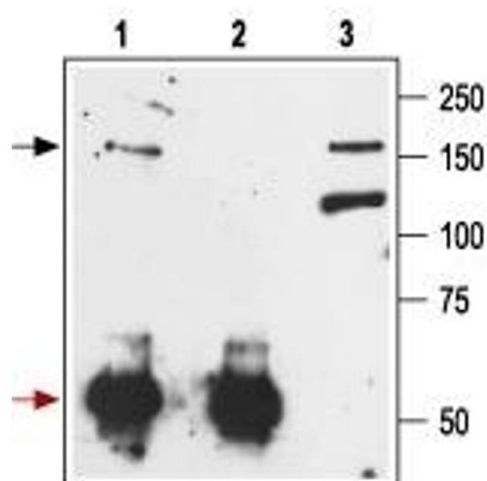
## Handling

Format:	Lyophilized
Reconstitution:	25 µL, 50 µL or 0.2 mL double distilled water (DDW), depending on the sample size.
Concentration:	0.8 mg/mL
Buffer:	Reconstituted antibody contains phosphate buffered saline (PBS), pH 7.4, 1 % BSA, 0.05 % Sodium azide.
Preservative:	Sodium azide
Precaution of Use:	This product contains Sodium azide: a POISONOUS AND HAZARDOUS SUBSTANCE which should be handled by trained staff only.
Storage:	RT, 4 °C, -20 °C
Storage Comment:	<p>Storage before reconstitution: The antibody ships as a lyophilized powder at room temperature. Upon arrival, it should be stored at -20°C.</p> <p>Storage after reconstitution: The reconstituted solution can be stored at 4°C for up to 1 week. For longer periods, small aliquots should be stored at -20°C. Avoid multiple freezing and thawing. Centrifuge all antibody preparations before use (10000 x g 5 min).</p>



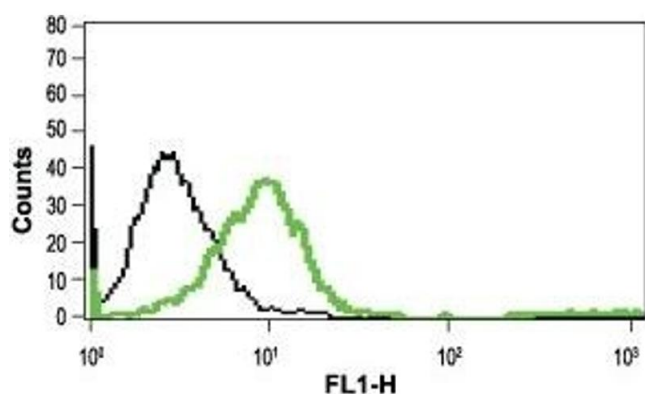
### Western Blotting

**Image 1.** Western blot analysis of mouse brain lysate: - 1. Anti-mGluR1 (extracellular) Antibody (ABIN7043245, ABIN7044330 and ABIN7044331), (1:200). 2. Anti-mGluR1 (extracellular) Antibody, preincubated with mGluR1 (extracellular) Blocking Peptide (#BLP-GC006).



### Immunoprecipitation

**Image 2.** Immunoprecipitation of rat brain lysate: - 1. Cell lysate + protein A beads + Anti-mGluR1 (extracellular) Antibody (ABIN7043245, ABIN7044330 and ABIN7044331). 2. Cell lysate + protein A beads + pre-immune rabbit serum. 3. Cell lysate. Black arrow indicates the mGluR1 protein (glycosylated form) while the red arrow shows the IgG heavy chain. Immunoblot was performed with the Anti-mGluR1 (extracellular) Antibody.



### Flow Cytometry

**Image 3.** Cell surface detection of mGluR1 in live intact Jurkat cells: (black line) Unstained cells + goat-anti-rabbit-FITC. (green line) Cells + Anti-mGluR1 (extracellular) Antibody (ABIN7043245, ABIN7044330 and ABIN7044331), (10 µg) + goat-anti-rabbit-FITC.

Please check the [product details page](#) for more images. Overall 5 images are available for ABIN7043245.