

Datasheet for ABIN7043247
anti-GRM2 antibody (Extracellular, N-Term)[Go to Product page](#)

4 Images

Overview

Quantity:	25 µL
Target:	GRM2
Binding Specificity:	AA 109-121, Extracellular, N-Term
Reactivity:	Human, Rat, Mouse
Host:	Rabbit
Clonality:	Polyclonal
Conjugate:	This GRM2 antibody is un-conjugated
Application:	Western Blotting (WB), Immunohistochemistry (IHC), Immunofluorescence (IF), Immunocytochemistry (ICC), Live Cell Imaging (LCI)

Product Details

Immunogen:	Immunogen: Synthetic peptide Immunogen Sequence: SLSRGADGSRHIC, corresponding to amino acids 109-121 of rat mGluR2
Isotype:	IgG
Characteristics:	Anti-mGluR2 (extracellular) Antibody is directed against an epitope of rat mGluR2. The epitope is specific for mGluR2 and will not cross-react with the closely related mGluR3 channel. Anti-mGluR2 (extracellular) Antibody (ABIN7043247, ABIN7044340 and ABIN7044341)) can be used in western blot, immunohistochemistry and live cell imaging applications. It has been designed to recognize mGluR2 from human, rat and mouse samples.
Purification:	Affinity purified on immobilized antigen.

Target Details

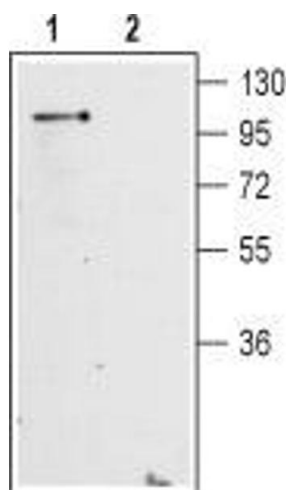
Target:	GRM2
Alternative Name:	mGluR2 (GRM2 Products)
Background:	Alternative names: mGluR2, Metabotropic glutamate receptor 2, GRM2, mGlu2, GPRC1B
Gene ID:	24415
NCBI Accession:	NM_000839
UniProt:	P31421
Pathways:	cAMP Metabolic Process , Dicarboxylic Acid Transport

Application Details

Application Notes:	Optimal working dilution should be determined by the investigator.
Restrictions:	For Research Use only

Handling

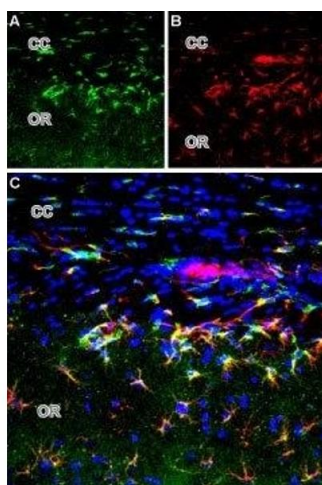
Format:	Lyophilized
Reconstitution:	25 µL, 50 µL or 0.2 mL double distilled water (DDW), depending on the sample size.
Concentration:	0.8 mg/mL
Buffer:	Reconstituted antibody contains phosphate buffered saline (PBS), pH 7.4, 1 % BSA, 0.05 % Sodium azide.
Preservative:	Sodium azide
Precaution of Use:	This product contains Sodium azide: a POISONOUS AND HAZARDOUS SUBSTANCE which should be handled by trained staff only.
Storage:	RT, 4 °C, -20 °C
Storage Comment:	<p>Storage before reconstitution: The antibody ships as a lyophilized powder at room temperature. Upon arrival, it should be stored at -20°C.</p> <p>Storage after reconstitution: The reconstituted solution can be stored at 4°C for up to 1 week. For longer periods, small aliquots should be stored at -20°C. Avoid multiple freezing and thawing. Centrifuge all antibody preparations before use (10000 x g 5 min).</p>



Western Blotting

Image 1. Western blot analysis of mouse brain membranes:

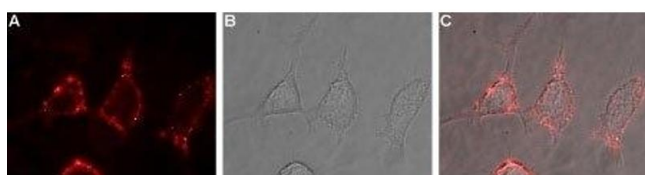
- 1. Anti-mGluR2 (extracellular) Antibody (ABIN7043247, ABIN7044340 and ABIN7044341), (1:200).
- 2. Anti-mGluR2 (extracellular) Antibody, preincubated with mGluR2 (extracellular) Blocking Peptide (#BLP-GC011).



Immunohistochemistry

Image 2. Expression of mGluR2 in rat brain -

Immunohistochemical staining of perfusion-fixed brain frozen sections using Anti-mGluR2 (extracellular) Antibody (ABIN7043247, ABIN7044340 and ABIN7044341). A. mGluR2 (green) is visualized in the corpus callosum (CC) and hippocampal stratum oriens (OR). B. Glial fibrillary acidic protein (GFAP) (red), a marker of astrocytes. C. Merge of the two images demonstrates expression of mGluR2 in astrocytes. DAPI is used as the nuclear counterstain (blue).



Immunocytochemistry

Image 3. Expression of mGluR2 in rat PC12 cells -

Cell surface detection of mGluR2 in live intact rat PC12 pheochromocytoma cells. A. Extracellular staining of cells with Anti-mGluR2 (extracellular) Antibody (ABIN7043247, ABIN7044340 and ABIN7044341), (1:100), followed by goat anti-rabbit-AlexaFluor-594 secondary antibody (red). B. Live view of the cells. C. Merge of A and B.

Please check the [product details page](#) for more images. Overall 4 images are available for ABIN7043247.