

Datasheet for ABIN7043248
anti-Metabotropic Glutamate Receptor 3 antibody
(Extracellular, N-Term)

[Go to Product page](#)

3 Images

Overview

Quantity:	25 µL
Target:	Metabotropic Glutamate Receptor 3 (GRM3)
Binding Specificity:	AA 24-38, Extracellular, N-Term
Reactivity:	Mouse, Rat
Host:	Rabbit
Clonality:	Polyclonal
Conjugate:	This Metabotropic Glutamate Receptor 3 antibody is un-conjugated
Application:	Western Blotting (WB), Immunohistochemistry (IHC), Immunocytochemistry (ICC), Immunofluorescence (IF), Live Cell Imaging (LCI)

Product Details

Immunogen:	Immunogen: Synthetic peptide Immunogen Sequence: (C)GDHNFMRREIKIEGD, corresponding to amino acids 24-38 of rat mGluR3
Isotype:	IgG
Characteristics:	Anti-mGluR3 (extracellular) Antibody is directed against an extracellular epitope of rat mGluR3. The epitope is specific for mGluR3 and will not cross-react with the closely related mGluR2. Anti-mGluR3 (extracellular) Antibody (ABIN7043248, ABIN7044342 and ABIN7044343)) can be used in western blot, live cell imaging and immunohistochemistry applications. It has been designed to recognize mGluR3 from rat and mouse samples.
Purification:	Affinity purified on immobilized antigen.

Target Details

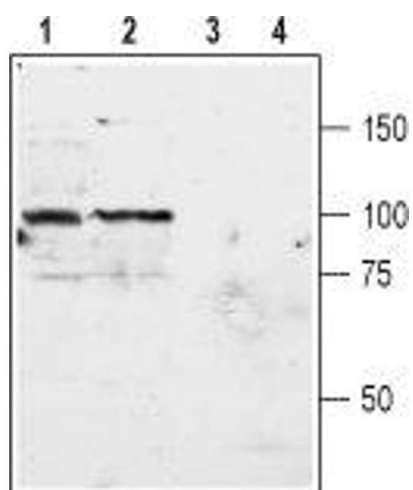
Target:	Metabotropic Glutamate Receptor 3 (GRM3)
Alternative Name:	mGluR3 (GRM3 Products)
Background:	Alternative names: mGluR3, Metabotropic glutamate receptor 3, GRM3, mGlu3, GPRC1C
Gene ID:	24416
NCBI Accession:	NM_000840
UniProt:	P31422
Pathways:	cAMP Metabolic Process , Synaptic Membrane

Application Details

Application Notes:	Optimal working dilution should be determined by the investigator.
Restrictions:	For Research Use only

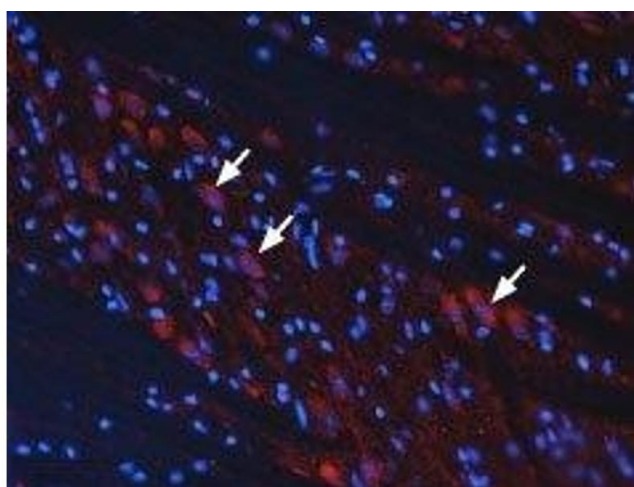
Handling

Format:	Lyophilized
Reconstitution:	25 µL, 50 µL or 0.2 mL double distilled water (DDW), depending on the sample size.
Concentration:	0.8 mg/mL
Buffer:	Reconstituted antibody contains phosphate buffered saline (PBS), pH 7.4, 1 % BSA, 0.05 % Sodium azide.
Preservative:	Sodium azide
Precaution of Use:	This product contains Sodium azide: a POISONOUS AND HAZARDOUS SUBSTANCE which should be handled by trained staff only.
Storage:	RT, 4 °C, -20 °C
Storage Comment:	<p>Storage before reconstitution: The antibody ships as a lyophilized powder at room temperature. Upon arrival, it should be stored at -20°C.</p> <p>Storage after reconstitution: The reconstituted solution can be stored at 4°C for up to 1 week. For longer periods, small aliquots should be stored at -20°C. Avoid multiple freezing and thawing. Centrifuge all antibody preparations before use (10000 x g 5 min).</p>



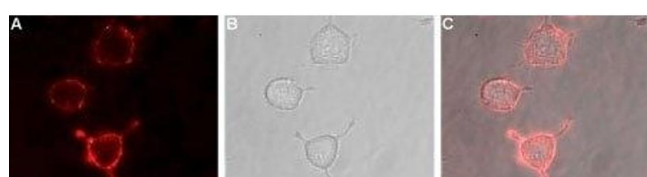
Western Blotting

Image 1. Western blot analysis of rat (lanes 1 and 3) and mouse (lanes 2 and 4) brain membranes: - 1,2. Anti-mGluR3 (extracellular) Antibody (ABIN7043248, ABIN7044342 and ABIN7044343), (1:600).3,4. Anti-mGluR3 (extracellular) Antibody, preincubated with mGluR3 (extracellular) Blocking Peptide (#BLP-GC012).



Immunohistochemistry

Image 2. Expression of mGluR3 in rat brain stem - Immunohistochemical staining of frozen brain stem sections using Anti-mGluR3 (extracellular) Antibody (ABIN7043248, ABIN7044342 and ABIN7044343), (1:100) followed by goat anti-rabbit AlexaFluor-555 secondary antibody (red). Staining is present in neuronal cell bodies (arrows) in the brainstem nuclei. Hoechst 33342 is used as the counterstain (blue).



Immunocytochemistry

Image 3. Expression of mGluR3 in rat PC12 cells - Cell surface detection of mGluR3 in live intact rat PC12 pheochromocytoma cells. A. Extracellular staining of cells with Anti-mGluR3 (extracellular) Antibody (ABIN7043248, ABIN7044342 and ABIN7044343), (1:50), followed by goat anti-rabbit-AlexaFluor-594 secondary antibody (red). B. Live view of the cells. C. Merge of A and B.