

Datasheet for ABIN7043250
anti-Metabotropic Glutamate Receptor 5 antibody
(Extracellular, N-Term)



[Go to Product page](#)

5 Images

Overview

Quantity:	25 µL
Target:	Metabotropic Glutamate Receptor 5 (GRM5)
Binding Specificity:	AA 367-380, Extracellular, N-Term
Reactivity:	Human, Rat, Mouse
Host:	Rabbit
Clonality:	Polyclonal
Conjugate:	This Metabotropic Glutamate Receptor 5 antibody is un-conjugated
Application:	Western Blotting (WB), Immunohistochemistry (IHC), Immunofluorescence (IF), Immunocytochemistry (ICC), Live Cell Imaging (LCI)

Product Details

Immunogen:	Immunogen: Synthetic peptide Immunogen Sequence: EGFAQENSKYNKTC, corresponding to amino acids 367-380 of rat mGluR5
Isotype:	IgG
Characteristics:	Anti-mGluR5 (extracellular) Antibody (ABIN7043250, ABIN7044332 and ABIN7044333)) is a highly specific antibody directed against an extracellular epitope of rat mGluR5. The antibody can be used in western blot, immunohistochemistry, live cell imaging, and indirect live cell flow cytometry applications. It has been designed to recognize mGluR5 from rat, mouse, and human samples.
Purification:	Affinity purified on immobilized antigen.

Target Details

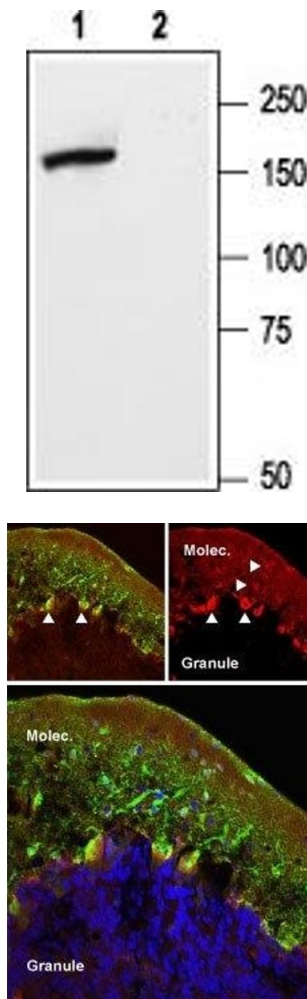
Target:	Metabotropic Glutamate Receptor 5 (GRM5)
Alternative Name:	mGluR5 (GRM5 Products)
Background:	Alternative names: mGluR5, Metabotropic glutamate receptor 5, GRM5, mGlu5, GPRC1E
Gene ID:	24418
NCBI Accession:	NM_000842
UniProt:	P31424
Pathways:	Regulation of G-Protein Coupled Receptor Protein Signaling , Regulation of long-term Neuronal Synaptic Plasticity

Application Details

Application Notes:	Optimal working dilution should be determined by the investigator.
Restrictions:	For Research Use only

Handling

Format:	Lyophilized
Reconstitution:	25 µL, 50 µL or 0.2 mL double distilled water (DDW), depending on the sample size.
Concentration:	0.75 mg/mL
Buffer:	Reconstituted antibody contains phosphate buffered saline (PBS), pH 7.4, 1 % BSA, 0.05 % Sodium azide.
Preservative:	Sodium azide
Precaution of Use:	This product contains Sodium azide: a POISONOUS AND HAZARDOUS SUBSTANCE which should be handled by trained staff only.
Storage:	RT, 4 °C, -20 °C
Storage Comment:	<p>Storage before reconstitution: The antibody ships as a lyophilized powder at room temperature. Upon arrival, it should be stored at -20°C.</p> <p>Storage after reconstitution: The reconstituted solution can be stored at 4°C for up to 1 week. For longer periods, small aliquots should be stored at -20°C. Avoid multiple freezing and thawing. Centrifuge all antibody preparations before use (10000 x g 5 min).</p>



Western Blotting

Image 1. Western blot analysis of rat brain membranes: - 1. Anti-mGluR5 (extracellular) Antibody (ABIN7043250, ABIN7044332 and ABIN7044333), (1:500). 2. Anti-mGluR5 (extracellular) Antibody, preincubated with mGluR5 (extracellular) Blocking Peptide (#BLP-GC007).

Immunohistochemistry

Image 2. Expression of mGluR5 in rat cerebellum - Immunohistochemical staining of perfusion-fixed frozen rat cerebellum sections using Anti-mGluR5 (extracellular) Antibody (ABIN7043250, ABIN7044332 and ABIN7044333), (1:50). mGluR5 (red) was detected in cerebellar Purkinje cells (vertical arrows) and in the molecular layer (horizontal arrows). Staining with mouse anti-parvalbumin (green) revealed co-localization in Purkinje but not in the molecular layer. Little staining of mGluR5 was detected in the granule layer. DAPI counterstain is used to visualize nuclei of all cells (blue).

Immunohistochemistry

Image 3. Expression of mGluR5 in rat hippocampus - Immunohistochemical staining of perfusion-fixed frozen rat hippocampus sections using Anti-mGluR5 (extracellular) Antibody (ABIN7043250, ABIN7044332 and ABIN7044333), (1:50). mGluR5 (red) was detected in CA3 cells (arrows). Staining with mouse anti-parvalbumin (green) revealed co-localization in pyramidal layer. DAPI counterstain was used to visualize nuclei of all cells (blue).

Please check the [product details page](#) for more images. Overall 5 images are available for ABIN7043250.