

Datasheet for ABIN7043255

anti-GRM7 antibody (Extracellular, N-Term)



[Go to Product page](#)

4 Images

Overview

| | |
|----------------------|--|
| Quantity: | 25 µL |
| Target: | GRM7 |
| Binding Specificity: | AA 377-390, Extracellular, N-Term |
| Reactivity: | Human, Rat, Mouse |
| Host: | Rabbit |
| Clonality: | Polyclonal |
| Conjugate: | This GRM7 antibody is un-conjugated |
| Application: | Western Blotting (WB), Immunohistochemistry (IHC), Immunofluorescence (IF), Immunocytochemistry (ICC), Flow Cytometry (FACS), Live Cell Imaging (LCI) |

Product Details

| | |
|------------------|--|
| Immunogen: | Immunogen: Synthetic peptide Immunogen Sequence: TISGSKKEDTRKC, corresponding to amino acid residues 377-390 of rat mGluR7 |
| Isotype: | IgG |
| Characteristics: | Anti-mGluR7 (extracellular) Antibody is directed against an extracellular epitope of rat mGluR7. Anti-mGluR7 (extracellular) Antibody (ABIN7043255, ABIN7044346 and ABIN7044347)) can be used in western blot, immunohistochemistry, immunocytochemistry and indirect flow cytometry applications. It has been designed to recognize mGluR7 from human, rat and mouse samples. |
| Purification: | Affinity purified on immobilized antigen. |

Target Details

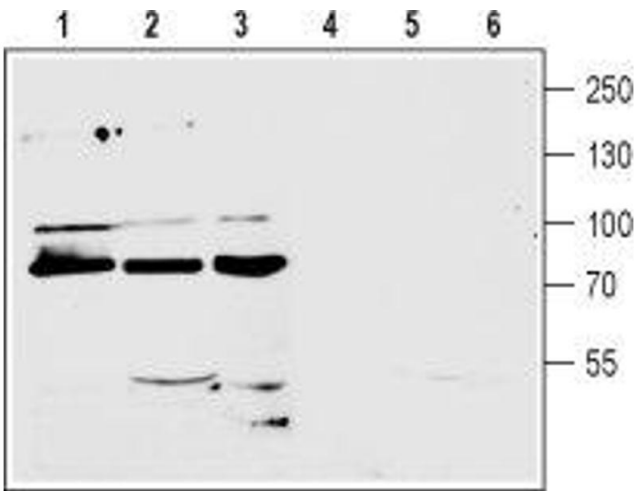
| | |
|-------------------|--|
| Target: | GRM7 |
| Alternative Name: | mGluR7 (GRM7 Products) |
| Background: | Alternative names: mGluR7, Metabotropic glutamate receptor 7, GRM7, mGlu7, Gprc1g |
| Gene ID: | 81672 |
| NCBI Accession: | NM_000844 |
| UniProt: | P35400 |
| Pathways: | Sensory Perception of Sound , cAMP Metabolic Process , Feeding Behaviour |

Application Details

| | |
|--------------------|--|
| Application Notes: | Optimal working dilution should be determined by the investigator. |
| Restrictions: | For Research Use only |

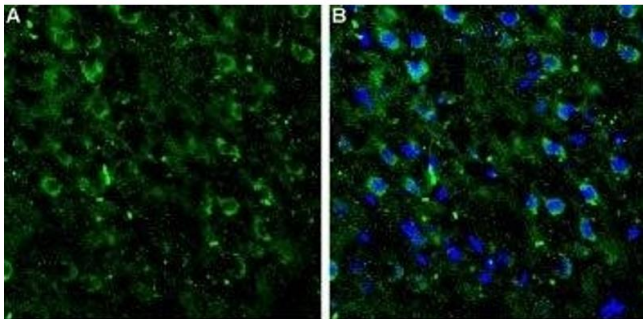
Handling

| | |
|--------------------|--|
| Format: | Lyophilized |
| Reconstitution: | 25 µL, 50 µL or 0.2 mL double distilled water (DDW), depending on the sample size. |
| Concentration: | 0.8 mg/mL |
| Buffer: | Reconstituted antibody contains phosphate buffered saline (PBS), pH 7.4, 1 % BSA, 0.05 % Sodium azide. |
| Preservative: | Sodium azide |
| Precaution of Use: | This product contains Sodium azide: a POISONOUS AND HAZARDOUS SUBSTANCE which should be handled by trained staff only. |
| Storage: | RT,4 °C,-20 °C |
| Storage Comment: | <p>Storage before reconstitution: The antibody ships as a lyophilized powder at room temperature. Upon arrival, it should be stored at -20°C.</p> <p>Storage after reconstitution: The reconstituted solution can be stored at 4°C for up to 1 week. For longer periods, small aliquots should be stored at -20°C. Avoid multiple freezing and thawing. Centrifuge all antibody preparations before use (10000 x g 5 min).</p> |



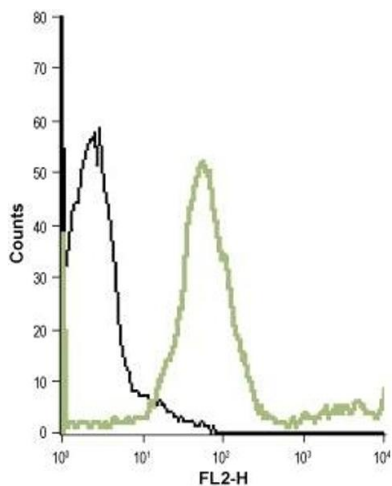
Western Blotting

Image 1. Western blot analysis of mouse (lanes 1 and 4) and rat (lanes 2 and 5) brain membranes and human CCF-STTG1 astrocytoma (lanes 3 and 6) cell line lysate (1:200): - 1-3. Anti-mGluR7 (extracellular) Antibody (ABIN7043255, ABIN7044346 and ABIN7044347), (1:200). 4-6. Anti-mGluR7 (extracellular) Antibody, preincubated with mGluR7 (extracellular) Blocking Peptide (#BLP-GC017).



Immunohistochemistry

Image 2. Expression of mGluR7 in rat neocortex - Immunohistochemical staining of rat neocortex frozen sections using Anti-mGluR7 (extracellular) Antibody (ABIN7043255, ABIN7044346 and ABIN7044347). A. mGluR7 staining (green) appears in several neocortical neurons. B. Merge image showing mGluR7 staining together with cell nuclei (blue).



Flow Cytometry

Image 3. Cell surface detection of mGluR7 in live intact human T cell leukemia (Jurkat) cell line: (black line) Unstained cells + goat-anti-rabbit-PE. (green line) Cells + Anti-mGluR7 (extracellular) Antibody (ABIN7043255, ABIN7044346 and ABIN7044347), (1:20) + goat-anti-rabbit-PE.

Please check the [product details page](#) for more images. Overall 4 images are available for ABIN7043255.