



[Go to Product page](#)

Datasheet for ABIN7043256

anti-GRM8 antibody (Extracellular, N-Term)

2 Images

Overview

Quantity:	50 µL
Target:	GRM8
Binding Specificity:	AA 365-377, Extracellular, N-Term
Reactivity:	Human, Mouse, Rat
Host:	Rabbit
Clonality:	Polyclonal
Conjugate:	This GRM8 antibody is un-conjugated
Application:	Western Blotting (WB), Immunohistochemistry (IHC), Immunofluorescence (IF)

Product Details

Immunogen:	Immunogen: Synthetic peptide Immunogen Sequence: (C)ENFG(S)KLGSHGKR, corresponding to amino acid residues 365-377 of rat mGluR8
Isotype:	IgG
Characteristics:	Anti-mGluR8 (extracellular) Antibody is directed against an extracellular epitope of rat mGluR8. Anti-mGluR8 (extracellular) Antibody (ABIN7043256 and ABIN7044363)) can be used in western blot and immunohistochemistry applications. It has been designed to recognize mGluR8 from rat, mouse and human samples.
Purification:	Affinity purified on immobilized antigen.

Target Details

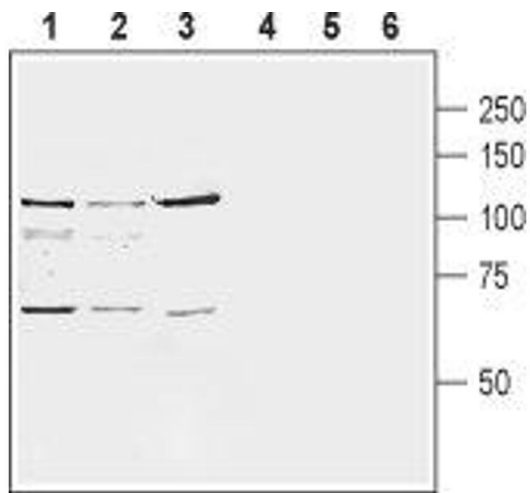
Target:	GRM8
Alternative Name:	mGluR8 (GRM8 Products)
Background:	Alternative names: mGluR8, Metabotropic glutamate receptor 8, GRM8, mGlu8, GPRC1H
Gene ID:	60590
NCBI Accession:	NM_000845
UniProt:	P70579
Pathways:	cAMP Metabolic Process , Synaptic Membrane

Application Details

Application Notes:	Optimal working dilution should be determined by the investigator.
Restrictions:	For Research Use only

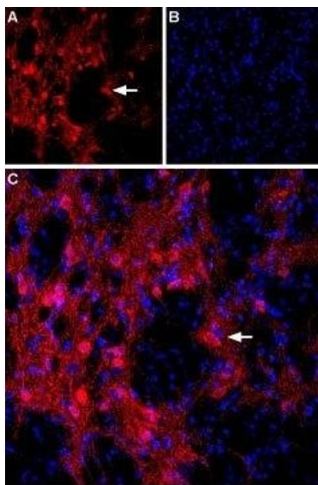
Handling

Format:	Lyophilized
Reconstitution:	50 µL or 0.2 mL double distilled water (DDW), depending on the sample size.
Concentration:	0.8 mg/mL
Buffer:	Reconstituted antibody contains phosphate buffered saline (PBS), pH 7.4, 1 % BSA, 0.05 % Sodium azide.
Preservative:	Sodium azide
Precaution of Use:	This product contains Sodium azide: a POISONOUS AND HAZARDOUS SUBSTANCE which should be handled by trained staff only.
Storage:	RT, 4 °C, -20 °C
Storage Comment:	<p>Storage before reconstitution: The antibody ships as a lyophilized powder at room temperature. Upon arrival, it should be stored at -20°C.</p> <p>Storage after reconstitution: The reconstituted solution can be stored at 4°C for up to 1 week. For longer periods, small aliquots should be stored at -20°C. Avoid multiple freezing and thawing. Centrifuge all antibody preparations before use (10000 x g 5 min).</p>



Western Blotting

Image 1. Western blot analysis of rat brain membranes (lanes 1 and 4), mouse brain membranes (lanes 2 and 5) and human SH-SY5Y neuroblastoma cell line lysate (lanes 3 and 6): - 1-3. Anti-mGluR8 (extracellular) Antibody (ABIN7043256 and ABIN7044363), (1:400). 4-6. Anti-mGluR8 (extracellular) Antibody, preincubated with mGluR8 (extracellular) Blocking Peptide (#BLP-GC028).



Immunohistochemistry

Image 2. Expression of mGluR8 in rat globus pallidus - Immunohistochemical staining of immersion-fixed, free floating rat brain frozen sections using Anti-mGluR8 (extracellular) Antibody (ABIN7043256 and ABIN7044363), (1:100). A. Staining reveals expression of mGluR8 (red) in globus pallidus neurons (arrow) and their dendrites. B. The same section was also stained with DAPI (blue) revealing cell nuclei. C. Merge of the two images.