



[Go to Product page](#)

Datasheet for ABIN7043257

## anti-GLRA1 antibody (2nd Cytoplasmic Loop)

### 2 Images

#### Overview

Quantity:	25 µL
Target:	GLRA1
Binding Specificity:	2nd Cytoplasmic Loop, AA 350-362
Reactivity:	Mouse, Rat
Host:	Rabbit
Clonality:	Polyclonal
Conjugate:	This GLRA1 antibody is un-conjugated
Application:	Western Blotting (WB), Immunohistochemistry (IHC), Immunofluorescence (IF)

#### Product Details

Immunogen:	Immunogen: Synthetic peptide Immunogen Sequence: (C)RHHKSPMLNLFQD, corresponding to amino acid residues 350-362 of rat GlyRalpha1
Isotype:	IgG
Characteristics:	Anti-Glycine Receptor alpha1 Antibody is directed against an epitope of the rat glycine receptor $\alpha 1$ . Anti-Glycine Receptor $\alpha 1$ Antibody (ABIN7043257, ABIN7044394 and ABIN7044395) can be used in western blot and immunohistochemical staining. It has been designed to recognize GlyRa1 from rat, mouse and human samples.
Purification:	Affinity purified on immobilized antigen.

## Target Details

---

Target:	GLRA1
Alternative Name:	Glycine Receptor alpha1 ( <a href="#">GLRA1 Products</a> )
Background:	Alternative names: Glycine Receptor alpha1, Glycine receptor subunit alpha-1, Glycine receptor 48 kDa subunit, Glycine receptor strychnine-binding subunit, GLRA1, Glycer
Gene ID:	25674
NCBI Accession:	<a href="#">NM_000171</a>
UniProt:	<a href="#">P07727</a>
Pathways:	<a href="#">Synaptic Membrane</a>

## Application Details

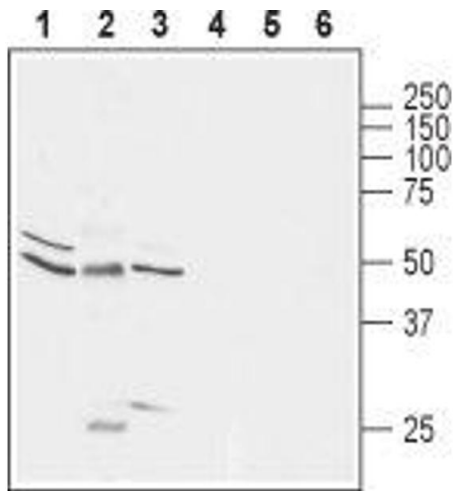
---

Application Notes:	Optimal working dilution should be determined by the investigator.
Restrictions:	For Research Use only

## Handling

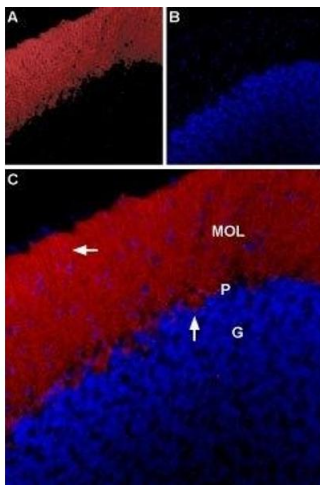
---

Format:	Lyophilized
Reconstitution:	25 µL, 50 µL or 0.2 mL double distilled water (DDW), depending on the sample size.
Concentration:	0.8 mg/mL
Buffer:	Reconstituted antibody contains phosphate buffered saline (PBS), pH 7.4, 1 % BSA, 0.05 % Sodium azide.
Preservative:	Sodium azide
Precaution of Use:	This product contains Sodium azide: a POISONOUS AND HAZARDOUS SUBSTANCE which should be handled by trained staff only.
Storage:	RT, 4 °C, -20 °C
Storage Comment:	Storage before reconstitution: The antibody ships as a lyophilized powder at room temperature. Upon arrival, it should be stored at -20°C. Storage after reconstitution: The reconstituted solution can be stored at 4°C for up to 1 week. For longer periods, small aliquots should be stored at -20°C. Avoid multiple freezing and thawing. Centrifuge all antibody preparations before use (10000 x g 5 min).



### Western Blotting

**Image 1.** Western blot analysis of rat DRG (lanes 1 and 4), mouse brain (lanes 2 and 5) and rat brain (lanes 3 and 6) lysates: - 1-3. Anti-Glycine Receptor  $\alpha$ 1 Antibody (ABIN7043257, ABIN7044394 and ABIN7044395), (1:400). 4-6. Anti-Glycine Receptor  $\alpha$ 1 Antibody, preincubated with Glycine Receptor  $\alpha$ 1 Blocking Peptide (#BLP-GR001).



### Immunohistochemistry

**Image 2.** Expression of GlyR  $\alpha$ 1 in rat cerebellum - Immunohistochemical staining of rat cerebellum using Anti-Glycine receptor  $\alpha$ 1 Antibody (ABIN7043257, ABIN7044394 and ABIN7044395), (1:100). A. GlyR $\alpha$ 1 staining (red) is revealed in the molecular layer (MOL), Bergmann glia (horizontal arrow) and in Purkinje cells (a vertical arrow). B. Nuclear staining using DAPI as the counterstain (blue). C. Merged images of A and B.