

Datasheet for ABIN7043259

anti-GLRA4 antibody (Extracellular, N-Term)[Go to Product page](#)**2** Images

Overview

Quantity:	25 µL
Target:	GLRA4
Binding Specificity:	AA 28-42, Extracellular, N-Term
Reactivity:	Human, Mouse, Rat
Host:	Rabbit
Clonality:	Polyclonal
Conjugate:	This GLRA4 antibody is un-conjugated
Application:	Western Blotting (WB), Immunocytochemistry (ICC), Immunofluorescence (IF), Live Cell Imaging (LCI)

Product Details

Immunogen:	Immunogen: Synthetic peptide Immunogen Sequence: (C)KEDVKSGLKGSQPMS, corresponding to amino acid residues 28-42 of mouse GlyRalpha4
Isotype:	IgG
Characteristics:	Anti-Glycine Receptor alpha4 (extracellular) Antibody is directed against an extracellular epitope of the mouse glycine receptor α4. Anti-Glycine Receptor α4 (extracellular) Antibody (ABIN7043259, ABIN7044404 and ABIN7044405)) can be used in western blot and live cell imagine applications. The antibody recognizes an extracellular epitope and thus is ideal for detecting GlyRa4 in living cells. It has been designed to recognize GlyRa4 from human, rat and mouse samples.

Product Details

Purification: Affinity purified on immobilized antigen.

Target Details

Target: GLRA4

Alternative Name: Glycine Receptor alpha4 ([GLRA4 Products](#))

Background: Alternative names: Glycine Receptor alpha4 , Glycine receptor subunit alpha-4, GLRA4

Gene ID: 14657

NCBI Accession: [NR_164162](#)

UniProt: [Q61603](#)

Application Details

Application Notes: Optimal working dilution should be determined by the investigator.

Restrictions: For Research Use only

Handling

Format: Lyophilized

Reconstitution: 25 µL, 50 µL or 0.2 mL double distilled water (DDW), depending on the sample size.

Concentration: 0.58 mg/mL

Buffer: Reconstituted antibody contains phosphate buffered saline (PBS), pH 7.4, 1 % BSA, 0.05 % Sodium azide.

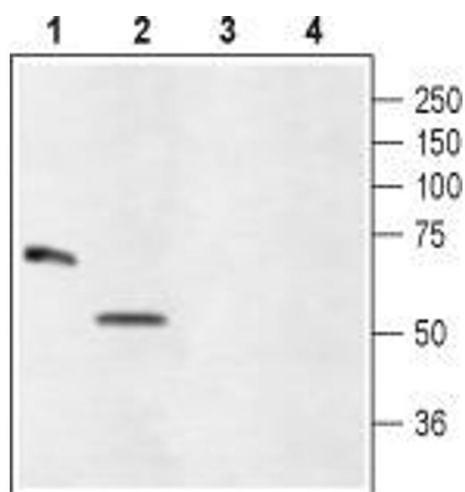
Preservative: Sodium azide

Precaution of Use: This product contains Sodium azide: a POISONOUS AND HAZARDOUS SUBSTANCE which should be handled by trained staff only.

Storage: RT, 4 °C, -20 °C

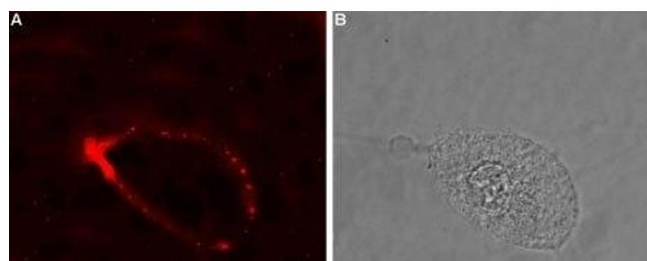
Storage Comment: Storage before reconstitution: The antibody ships as a lyophilized powder at room temperature. Upon arrival, it should be stored at -20°C.

Storage after reconstitution: The reconstituted solution can be stored at 4°C for up to 1 week. For longer periods, small aliquots should be stored at -20°C. Avoid multiple freezing and thawing. Centrifuge all antibody preparations before use (10000 x g 5 min).



Western Blotting

Image 1. Western blot analysis of rat eye (lanes 1 and 3) and ARPE-19 (lanes 2 and 4) lysates: - 1,2. Anti-Glycine Receptor $\alpha 4$ (extracellular) Antibody (ABIN7043259, ABIN7044404 and ABIN7044405), (1:500).3,4. Anti-Glycine Receptor $\alpha 4$ (extracellular) Antibody, preincubated with Glycine Receptor $\alpha 4$ (extracellular) Blocking Peptide (#BLP-GR015).



Immunocytochemistry

Image 2. Expression of GlyR $\alpha 4$ in human retinal epithelium (ARPE-19) - Cell surface detection of GlyR $\alpha 4$ in intact living human ARPE-19 cells. A. Extracellular staining of cells using Anti-Glycine Receptor $\alpha 4$ (extracellular) Antibody (ABIN7043259, ABIN7044404 and ABIN7044405), (1:50) followed by goat anti-rabbit-AlexaFluor-594 secondary antibody. B. Merge image of A and live view of the cells.