

Datasheet for ABIN7043261

anti-GLYT1 antibody (2nd Extracellular Loop)



[Go to Product page](#)

1 Image

Overview

Quantity:	50 µL
Target:	GLYT1
Binding Specificity:	2nd Extracellular Loop, AA 202-214
Reactivity:	Human, Rat, Mouse
Host:	Rabbit
Clonality:	Polyclonal
Conjugate:	This GLYT1 antibody is un-conjugated
Application:	Western Blotting (WB)

Product Details

Immunogen:	Immunogen: Synthetic peptide Immunogen Sequence: (C)RLYVLKLSDDIGD, corresponding to amino acid residues 202-214 of rat GlyT1
Isotype:	IgG
Characteristics:	Anti-GlyT1 (SLC6A9) (extracellular) Antibody (ABIN7043261, ABIN7044473 and ABIN7044474)) is a highly specific antibody directed against an epitope of the rat glycine transporter 1. The antibody can be used in western blot analysis. The antibody recognizes an extracellular epitope and can thus potentially recognize GlyT1 in living cells. It has been designed to recognize GlyT1 from rat, mouse, and human samples.
Purification:	Affinity purified on immobilized antigen.

Target Details

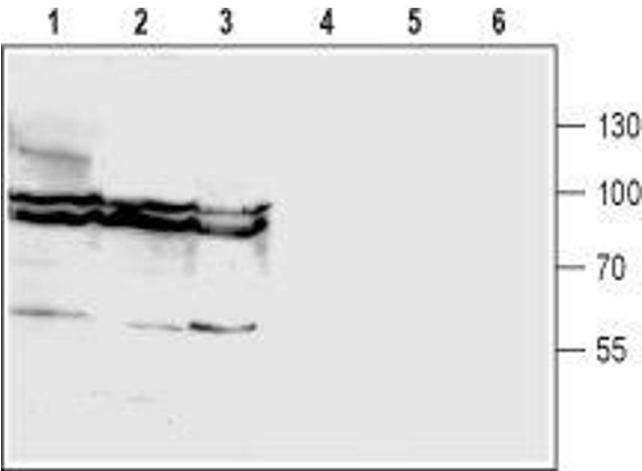
Target:	GLYT1
Alternative Name:	GlyT1 (SLC6A9) (GLYT1 Products)
Background:	Alternative names: GlyT1 (SLC6A9), Na+/Cl--dependent glycine transporter 1
Gene ID:	116509
NCBI Accession:	NM_201649
UniProt:	P28572

Application Details

Application Notes:	Optimal working dilution should be determined by the investigator.
Restrictions:	For Research Use only

Handling

Format:	Lyophilized
Reconstitution:	25 µL, 50 µL or 0.2 mL double distilled water (DDW), depending on the sample size.
Concentration:	0.8 mg/mL
Buffer:	Reconstituted antibody contains phosphate buffered saline (PBS), pH 7.4, 1 % BSA, 0.05 % Sodium azide.
Preservative:	Sodium azide
Precaution of Use:	This product contains Sodium azide: a POISONOUS AND HAZARDOUS SUBSTANCE which should be handled by trained staff only.
Storage:	RT,4 °C,-20 °C
Storage Comment:	<p>Storage before reconstitution: The antibody ships as a lyophilized powder at room temperature. Upon arrival, it should be stored at -20°C.</p> <p>Storage after reconstitution: The reconstituted solution can be stored at 4°C for up to 1 week. For longer periods, small aliquots should be stored at -20°C. Avoid multiple freezing and thawing. Centrifuge all antibody preparations before use (10000 x g 5 min).</p>



Western Blotting

Image 1. Western blot analysis of rat brain (lanes 1 and 4), mouse brain (lanes 2 and 5) and human U87-MG glioma cell (lanes 3 and 6) lysates: - 1-3. Anti-GlyT1 (SLC6A9) (extracellular) Antibody (ABIN7043261, ABIN7044473 and ABIN7044474), (1:200).4-6. Anti-GlyT1 (SLC6A9) (extracellular) Antibody, preincubated with GlyT1/SLC6A9 (extracellular) Blocking Peptide (#BLP-GT011).