

Datasheet for ABIN7043264
anti-GHSR antibody (2nd Extracellular Loop)

4 Images

[Go to Product page](#)

Overview

Quantity:	25 µL
Target:	GHSR
Binding Specificity:	2nd Extracellular Loop, AA 197-207
Reactivity:	Human, Mouse, Rat
Host:	Rabbit
Clonality:	Polyclonal
Conjugate:	This GHSR antibody is un-conjugated
Application:	Western Blotting (WB), Immunohistochemistry (IHC), Immunocytochemistry (ICC), Immunofluorescence (IF), Live Cell Imaging (LCI)

Product Details

Immunogen:	Immunogen: Synthetic peptide Immunogen Sequence: CRATEFAVRSG, corresponding to amino acid residues 197-207 of rat Ghrelin receptor
Isotype:	IgG
Characteristics:	Anti-Ghrelin Receptor (GHSR) (extracellular) Antibody (ABIN7043264, ABIN7044417 and ABIN7044418)) is a highly specific antibody directed against an epitope of the rat protein. The antibody can be used in western blot, immunohistochemistry, live cell imaging, and immunocytochemistry applications. It has been designed to recognize GHSR from human, mouse, and rat samples.
Purification:	Affinity purified on immobilized antigen.

Target Details

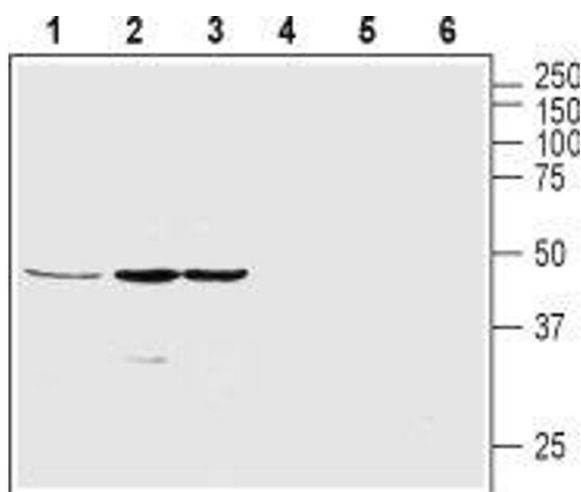
Target:	GHSR
Alternative Name:	Ghrelin Receptor (GHSR) (GHSR Products)
Background:	Alternative names: Ghrelin Receptor (GHSR), Growth hormone secretagogue receptor type 1, GHS-R, GH-releasing peptide receptor, GHRP
Gene ID:	84022
NCBI Accession:	NM_004122
UniProt:	O08725
Pathways:	Hormone Transport , Negative Regulation of Hormone Secretion , Feeding Behaviour

Application Details

Application Notes:	Optimal working dilution should be determined by the investigator.
Restrictions:	For Research Use only

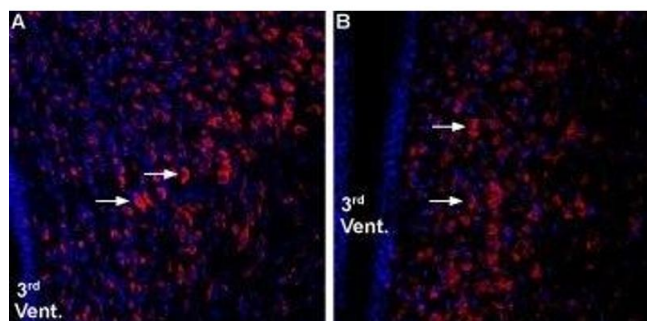
Handling

Format:	Lyophilized
Reconstitution:	25 µL, 50 µL or 0.2 mL double distilled water (DDW), depending on the sample size.
Concentration:	1 mg/mL
Buffer:	Reconstituted antibody contains phosphate buffered saline (PBS), pH 7.4, 1 % BSA, 0.05 % Sodium azide.
Preservative:	Sodium azide
Precaution of Use:	This product contains Sodium azide: a POISONOUS AND HAZARDOUS SUBSTANCE which should be handled by trained staff only.
Storage:	RT, 4 °C, -20 °C
Storage Comment:	<p>Storage before reconstitution: The antibody ships as a lyophilized powder at room temperature. Upon arrival, it should be stored at -20°C.</p> <p>Storage after reconstitution: The reconstituted solution can be stored at 4°C for up to 1 week. For longer periods, small aliquots should be stored at -20°C. Avoid multiple freezing and thawing. Centrifuge all antibody preparations before use (10000 x g 5 min).</p>



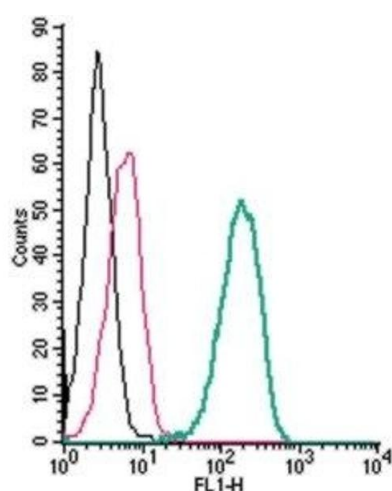
Western Blotting

Image 1. Western blot analysis of rat pancreas (lanes 1 and 4), SH-SY5Y (lanes 2 and 5) and MS1 (lanes 3 and 6) lysates: - 1-3. Anti-Ghrelin Receptor (GHSR) (extracellular) Antibody (ABIN7043264, ABIN7044417 and ABIN7044418), (1:200). 4-6. Anti-Ghrelin Receptor (GHSR) (extracellular) Antibody, preincubated with Ghrelin Receptor/GHSR (extracellular) Blocking Peptide (#BLP-GR031).



Immunohistochemistry

Image 2. Expression of Ghrelin receptor in rat and mouse hypothalamus - Immunohistochemical staining of rat and mouse hypothalamic paraventricular nucleus (PVN) using Anti-Ghrelin Receptor (GHSR) (extracellular) Antibody (ABIN7043264, ABIN7044417 and ABIN7044418), (1:800). A. Ghrelin receptor 1 staining (red) in mouse appears in cells of the PVN (arrows). B. Ghrelin receptor staining in rat is similar. Nuclear staining using DAPI as the counterstain (blue).



Flow Cytometry

Image 3. Cell surface detection of Ghrelin Receptor by indirect flow cytometry in live intact human THP-1 monocytic leukemia cells: (black line) Cells. (red line) Cells + goat-anti-rabbit-FITC. (green line) Cells + Anti-Ghrelin Receptor (GHSR) (extracellular) Antibody (ABIN7043264, ABIN7044417 and ABIN7044418), (2.5 µg) + goat-anti-rabbit-FITC.

Please check the [product details page](#) for more images. Overall 4 images are available for ABIN7043264.