

[Go to Product page](#)

Datasheet for ABIN7043265

anti-GHSR antibody (2nd Extracellular Loop) (FITC)**2** Images

Overview

Quantity:	50 µL
Target:	GHSR
Binding Specificity:	2nd Extracellular Loop, AA 197-207
Reactivity:	Human, Mouse, Rat
Host:	Rabbit
Clonality:	Polyclonal
Conjugate:	This GHSR antibody is conjugated to FITC
Application:	Flow Cytometry (FACS)

Product Details

Immunogen:	Immunogen: Synthetic peptide Immunogen Sequence: CRATEFAVRSG, corresponding to amino acid residues 197-207 of rat Ghrelin receptor
Isotype:	IgG
Characteristics:	Anti-Ghrelin Receptor (GHSR) (extracellular) Antibody (ABIN7043264, ABIN7044417 and ABIN7044418)) is a highly specific antibody directed against an epitope of the rat protein. The antibody can be used in western blot, immunohistochemistry, live cell imaging, and immunocytochemistry applications. It has been designed to recognize GHSR from human, mouse, and rat samples. \nAnti-Ghrelin Receptor (GHSR) (extracellular)-FITC Antibody (ABIN7043264, ABIN7044417 and ABIN7044418)-F) is directly conjugated to fluorescein isothiocyanate (FITC). The antibody can be used in immunofluorescent applications such as direct live cell flow cytometry.

Product Details

Purification: Affinity purified on immobilized antigen.

Target Details

Target: GHSR

Alternative Name: Ghrelin Receptor (GHSR) ([GHSR Products](#))

Background: Alternative names: Ghrelin Receptor (GHSR), Growth hormone secretagogue receptor type 1, GHS-R, GH-releasing peptide receptor, GHRP

Gene ID: 84022

NCBI Accession: [NM_004122](#)

UniProt: [O08725](#)

Pathways: [Hormone Transport](#), [Negative Regulation of Hormone Secretion](#), [Feeding Behaviour](#)

Application Details

Application Notes: Optimal working dilution should be determined by the investigator.

Restrictions: For Research Use only

Handling

Format: Lyophilized

Reconstitution: 50 µL double distilled water (DDW).

Concentration: 1 mg/mL

Buffer: Reconstituted antibody contains phosphate buffered saline (PBS), pH 7.4, 1 % BSA, 0.05 % Sodium azide.

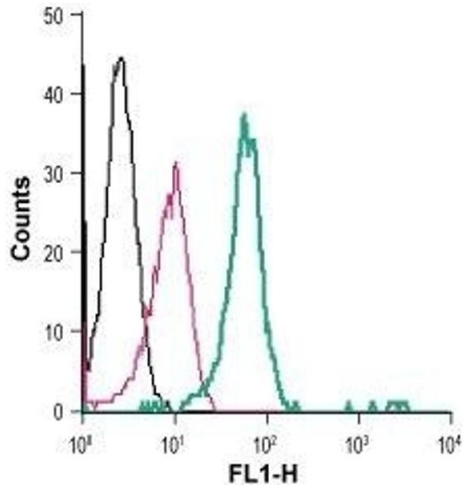
Preservative: Sodium azide

Precaution of Use: This product contains Sodium azide: a POISONOUS AND HAZARDOUS SUBSTANCE which should be handled by trained staff only.

Storage: RT, 4 °C, -20 °C

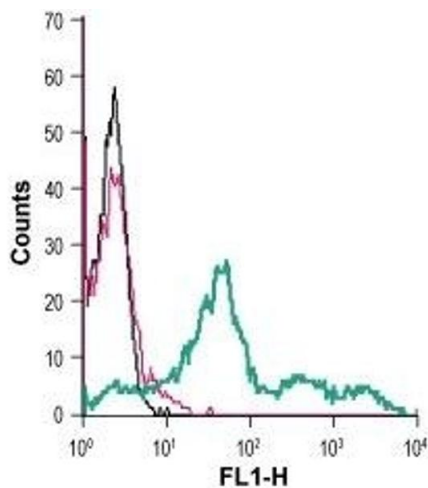
Storage Comment: Storage before reconstitution: The antibody ships as a lyophilized powder at room temperature. Upon arrival, it should be stored at -20°C.
Storage after reconstitution: The reconstituted solution can be stored at 4°C, protected from the light, for up to 1 week. For longer periods, small aliquots should be stored at -20°C. Avoid

multiple freezing and thawing. Centrifuge all antibody preparations before use (10000 x g 5 min).



Flow Cytometry

Image 1. Cell surface detection of Ghrelin receptor in live intact human THP-1 monocytic leukemia cells: (black line) Cells.(red line) Cells + Rabbit IgG isotype control-FITC.(green line) Cells + Anti-Ghrelin Receptor (GHSR) (extracellular)-FITC Antibody (ABIN7043265, ABIN7045535, ABIN7045536 and ABIN7045537), (5 µg).



Flow Cytometry

Image 2. Cell surface detection of Ghrelin receptor in live intact mouse TK-1 T-cell lymphoma cells: (black line) Cells.(red line) Cells + Rabbit IgG isotype control-FITC.(green line) Cells + Anti-Ghrelin Receptor (GHSR) (extracellular)-FITC Antibody (ABIN7043265, ABIN7045535, ABIN7045536 and ABIN7045537), (2.5 µg).