



Datasheet for ABIN7043266  
**anti-GSG1-Like antibody (C-Term, Intracellular)**



[Go to Product page](#)

3 Images

Overview

Quantity:	0.2 mL
Target:	GSG1-Like (GSG1L)
Binding Specificity:	AA 283-295, C-Term, Intracellular
Reactivity:	Human, Mouse, Rat
Host:	Rabbit
Clonality:	Polyclonal
Conjugate:	This GSG1-Like antibody is un-conjugated
Application:	Immunohistochemistry (IHC), Western Blotting (WB), Immunofluorescence (IF)

Product Details

Immunogen:	Immunogen: Synthetic peptide Immunogen Sequence: CRHERYPTRHQPH, corresponding to amino acid residues 283 - 295 of rat GSG1L
Isotype:	IgG
Characteristics:	Anti-GSG1L Antibody (ABIN7043266, ABIN7044390 and ABIN7044391)) is a highly specific antibody directed against an epitope of the rat protein. The antibody can be used in western blot and immunohistochemistry applications. It has been designed to recognize GSG1L from human, rat, and mouse samples.
Purification:	Affinity purified on immobilized antigen.

## Target Details

---

Target:	GSG1-Like (GSG1L)
Alternative Name:	GSG1L ( <a href="#">GSG1L Products</a> )
Background:	Alternative names: Germ Cell-Specific Gene 1-Like Protein, GSG1-Like Protein
Gene ID:	499263
NCBI Accession:	<a href="#">NM_144675</a>
UniProt:	<a href="#">D3ZK93</a>

## Application Details

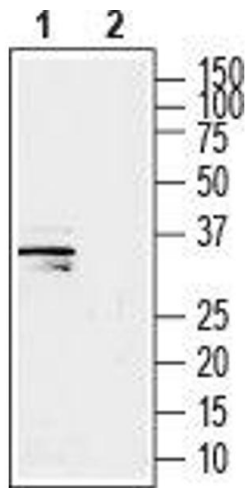
---

Application Notes:	Optimal working dilution should be determined by the investigator.
Restrictions:	For Research Use only

## Handling

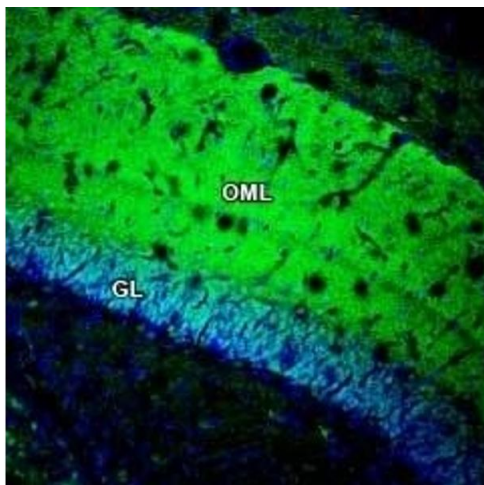
---

Format:	Lyophilized
Reconstitution:	25 µL, 50 µL or 0.2 mL double distilled water (DDW), depending on the sample size.
Concentration:	0.8 mg/mL
Buffer:	Reconstituted antibody contains phosphate buffered saline (PBS), pH 7.4, 1 % BSA, 0.05 % Sodium azide.
Preservative:	Sodium azide
Precaution of Use:	This product contains Sodium azide: a POISONOUS AND HAZARDOUS SUBSTANCE which should be handled by trained staff only.
Storage:	RT, 4 °C, -20 °C
Storage Comment:	Storage before reconstitution: The antibody ships as a lyophilized powder at room temperature. Upon arrival, it should be stored at -20°C. Storage after reconstitution: The reconstituted solution can be stored at 4°C for up to 1 week. For longer periods, small aliquots should be stored at -20°C. Avoid multiple freezing and thawing. Centrifuge all antibody preparations before use (10000 x g 5 min).



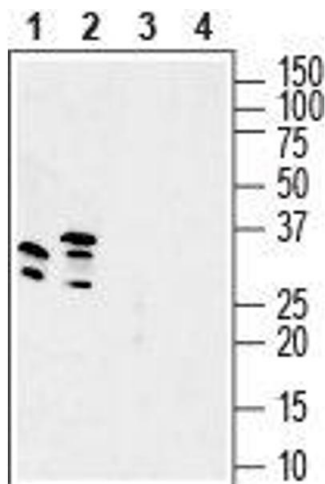
### Western Blotting

**Image 1.** Western blot analysis of human SH-SY5Y neuroblastoma cell line lysate: - 1. Anti-GSG1L Antibody (ABIN7043266, ABIN7044390 and ABIN7044391), (1:200). 2. Anti-GSG1L Antibody, preincubated with GSG1L Blocking Peptide (#BLP-GC048).



### Immunohistochemistry

**Image 2.** Expression of GSG1L in rat hippocampus - Immunohistochemical staining of perfusion-fixed frozen rat brain sections with Anti-GSG1L Antibody (ABIN7043266, ABIN7044390 and ABIN7044391), (1:200), followed by goat anti-rabbit-AlexaFluor-488. GSG1L immunoreactivity (green) appears in the outer molecular layer (OML) and in the granule layer (GL) of the hippocampal dentate gyrus. Cell nuclei are stained with DAPI (blue).



### Western Blotting

**Image 3.** Western blot analysis of mouse brain lysate (lanes 1 and 3) and rat brain membranes (lanes 2 and 4): - 1, 2. Anti-GSG1L Antibody (ABIN7043266, ABIN7044390 and ABIN7044391), (1:200). 3, 4. Anti-GSG1L Antibody, preincubated with GSG1L Blocking Peptide (#BLP-GC048).