

Datasheet for ABIN7043267
anti-ChT antibody (4th Extracellular Loop)

3 Images

[Go to Product page](#)

Overview

Quantity:	50 µL
Target:	ChT
Binding Specificity:	4th Extracellular Loop, AA 299-311
Reactivity:	Human, Mouse, Rat
Host:	Rabbit
Clonality:	Polyclonal
Conjugate:	This ChT antibody is un-conjugated
Application:	Western Blotting (WB), Immunohistochemistry (IHC), Immunocytochemistry (ICC), Immunofluorescence (IF), Live Cell Imaging (LCI)

Product Details

Immunogen:	Immunogen: Synthetic peptide Immunogen Sequence: (C)DWNQTAYGYDPK, corresponding to amino acid residues 299-311 of mouse Choline transporter
Isotype:	IgG
Characteristics:	Anti-Choline Transporter (SLC5A7) (extracellular) Antibody is directed against an epitope of mouse CHT. Anti-Choline Transporter (SLC5A7) (extracellular) Antibody (ABIN7043267 and ABIN7044218)) can be used in western blot, immunohistochemistry and immunocytochemistry applications. It has been designed to recognize CHT from rat, mouse and human samples.
Purification:	Affinity purified on immobilized antigen.

Target Details

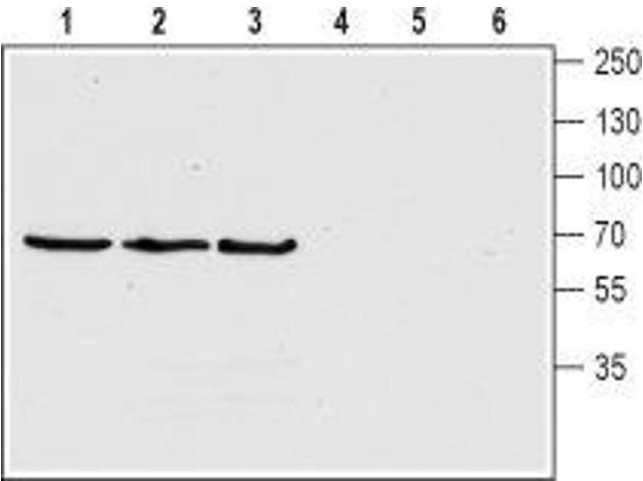
Target:	ChT
Alternative Name:	Choline Transporter (SLC5A7) (ChT Products)
Background:	Alternative names: Choline Transporter (SLC5A7), Na ⁺ /Cl ⁻ -Dependent high affinity choline transporter 1, Hemicholinium-3-sensitive choline transporter, CHT, CHT1
Gene ID:	63993
NCBI Accession:	NM_001305005
UniProt:	Q8BGY9

Application Details

Application Notes:	Optimal working dilution should be determined by the investigator.
Restrictions:	For Research Use only

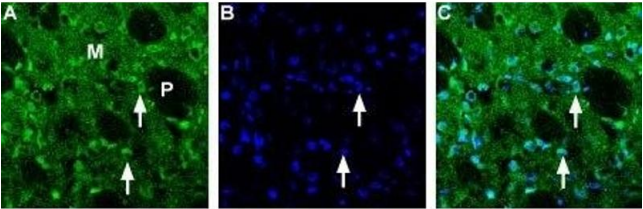
Handling

Format:	Lyophilized
Reconstitution:	50 µL or 0.2 mL double distilled water (DDW), depending on the sample size.
Concentration:	0.8 mg/mL
Buffer:	Reconstituted antibody contains phosphate buffered saline (PBS), pH 7.4, 1 % BSA, 0.05 % Sodium azide.
Preservative:	Sodium azide
Precaution of Use:	This product contains Sodium azide: a POISONOUS AND HAZARDOUS SUBSTANCE which should be handled by trained staff only.
Storage:	RT, 4 °C, -20 °C
Storage Comment:	<p>Storage before reconstitution: The antibody ships as a lyophilized powder at room temperature. Upon arrival, it should be stored at -20°C.</p> <p>Storage after reconstitution: The reconstituted solution can be stored at 4°C for up to 1 week. For longer periods, small aliquots should be stored at -20°C. Avoid multiple freezing and thawing. Centrifuge all antibody preparations before use (10000 x g 5 min).</p>



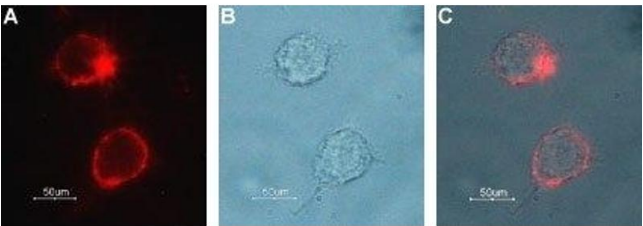
Western Blotting

Image 1. Western blot analysis of human SH-5YSY neuroblastoma cell lysate (lanes 1 and 4), rat (lanes 2 and 5) and mouse (lanes 3 and 6) brain lysates: - 1-3. Anti-Choline Transporter (SLC5A7) (extracellular) Antibody (ABIN7043267 and ABIN7044218), (1:200). 4-6. Anti-Choline Transporter (SLC5A7) (extracellular) Antibody, preincubated with Choline Transporter/SLC5A7 (extracellular) Blocking Peptide (#BLP-CT001).



Immunohistochemistry

Image 2. Expression of Choline transporter in rat striatum - Immunohistochemical staining of rat frozen brain sections using Anti-Choline Transporter (SLC5A7) (extracellular) Antibody (ABIN7043267 and ABIN7044218) (1:200). A. CHT expression (green) is detected in the matrix (M) but not in the patches (P). B. DAPI (blue) staining provides general cellular staining. C. merge of A and B shows that CHT appears in a subset of striatal neurons (arrows).



Immunocytochemistry

Image 3. Expression of Choline transporter in rat PC12 cells - Cell surface detection of CHT in live intact rat pheochromocytoma PC12 cells. A. Cells were stained with Anti-Choline Transporter (SLC5A7) (extracellular) Antibody (ABIN7043267 and ABIN7044218), (1:100), followed by goat anti-rabbit-AlexaFluor-594 secondary antibody (red). B. Live view of the cells. C. Merge of the two images.