

Datasheet for ABIN7043274
anti-HOMER2 antibody (C-Term, Intracellular)



[Go to Product page](#)

3 Images

Overview

Quantity:	25 µL
Target:	HOMER2
Binding Specificity:	AA 302-316, C-Term, Intracellular
Reactivity:	Human, Rat, Mouse
Host:	Rabbit
Clonality:	Polyclonal
Conjugate:	This HOMER2 antibody is un-conjugated
Application:	Western Blotting (WB), Immunohistochemistry (IHC), Immunofluorescence (IF)

Product Details

Immunogen:	Immunogen: Synthetic peptide Immunogen Sequence: (C)EDKVRSLKTDIEESK, corresponding to amino acid residues 302-316 of rat Homer2
Isotype:	IgG
Characteristics:	Anti-Homer2 Antibody (ABIN7043274, ABIN7045170 and ABIN7045171)) is a highly selective antibody directed against an epitope of the rat protein. The antibody can be used in western blot and immunohistochemistry applications. It has been designed to recognize Homer2 from human, mouse, and rat samples.
Purification:	Affinity purified on immobilized antigen.

Target Details

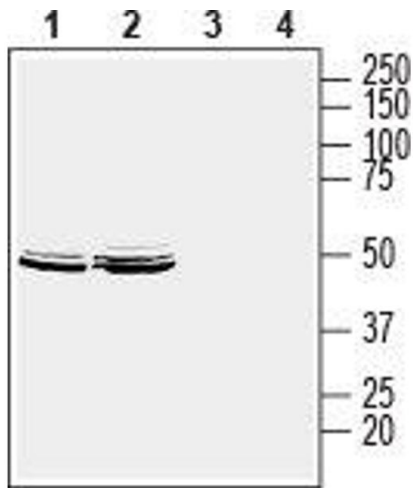
Target:	HOMER2
Alternative Name:	Homer2 (HOMER2 Products)
Background:	Alternative names: Homer2, Homer protein homolog 2, Cupidin, Vesl-2
Gene ID:	29547
NCBI Accession:	NM_004839
UniProt:	O88801
Pathways:	Synaptic Membrane, Regulation of G-Protein Coupled Receptor Protein Signaling

Application Details

Application Notes:	Optimal working dilution should be determined by the investigator.
Restrictions:	For Research Use only

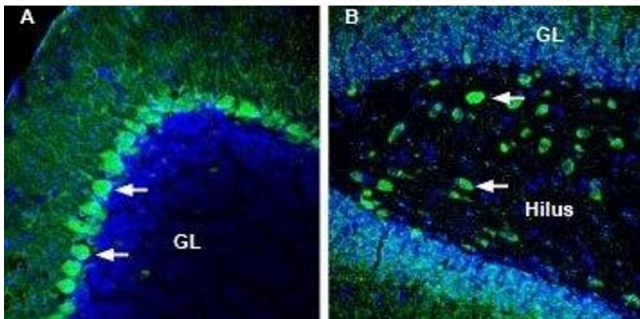
Handling

Format:	Lyophilized
Reconstitution:	25 µL, 50 µL or 0.2 mL double distilled water (DDW), depending on the sample size.
Concentration:	0.8 mg/mL
Buffer:	Reconstituted antibody contains phosphate buffered saline (PBS), pH 7.4, 1 % BSA, 0.05 % Sodium azide.
Preservative:	Sodium azide
Precaution of Use:	This product contains Sodium azide: a POISONOUS AND HAZARDOUS SUBSTANCE which should be handled by trained staff only.
Storage:	RT, 4 °C, -20 °C
Storage Comment:	<p>Storage before reconstitution: The antibody ships as a lyophilized powder at room temperature. Upon arrival, it should be stored at -20°C.</p> <p>Storage after reconstitution: The reconstituted solution can be stored at 4°C for up to 1 week. For longer periods, small aliquots should be stored at -20°C. Avoid multiple freezing and thawing. Centrifuge all antibody preparations before use (10000 x g 5 min).</p>



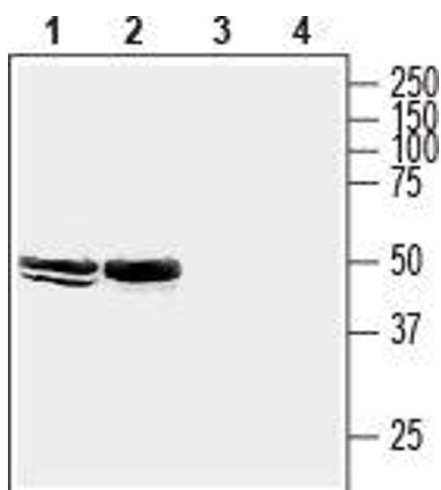
Western Blotting

Image 1. Western blot analysis of human MCF-7 breast adenocarcinoma cell lysate (lanes 1 and 3) and human LNCaP prostate adenocarcinoma cell lysate (lanes 2 and 4): - 1,2. Anti-Homer2 Antibody (ABIN7043274, ABIN7045170 and ABIN7045171), (1:200).3,4. Anti-Homer2 Antibody, preincubated with Homer2 Blocking Peptide (#BLP-PZ027).



Immunohistochemistry

Image 2. Expression of Homer2 in mouse cerebellum and rat hippocampus - Immunohistochemical staining of perfusion-fixed frozen mouse and rat brain sections with Anti-Homer2 Antibody (ABIN7043274, ABIN7045170 and ABIN7045171), (1:200), followed by goat-anti-rabbit-AlexaFluor-488. A. Homer2 staining (green) in mouse cerebellum is observed in Purkinje cells (arrows) and their dendrites. B. Homer2 staining (green) in rat hippocampal dentate gyrus region is detected granule layer (GL) and interneurons in the hilus (arrows). Cell nuclei are stained with DAPI (blue).



Western Blotting

Image 3. Western blot analysis of mouse brain membranes (lanes 1 and 3) and rat hippocampus lysate (lanes 2 and 4): - 1,2. Anti-Homer2 Antibody (ABIN7043274, ABIN7045170 and ABIN7045171), (1:200).3,4. Anti-Homer2 Antibody, preincubated with Homer2 Blocking Peptide (#BLP-PZ027).