



[Go to Product page](#)

Datasheet for ABIN7043287

anti-ITPR1 antibody (C-Term, Intracellular)

2 Images

Overview

Quantity:	25 µL
Target:	ITPR1
Binding Specificity:	AA 2732-2750, C-Term, Intracellular
Reactivity:	Human, Mouse, Rat
Host:	Rabbit
Clonality:	Polyclonal
Conjugate:	This ITPR1 antibody is un-conjugated
Application:	Immunohistochemistry (IHC), Western Blotting (WB), Immunofluorescence (IF), Immunoprecipitation (IP), Immunocytochemistry (ICC)

Product Details

Immunogen:	Immunogen: Synthetic peptide Immunogen Sequence: (C)RIGLLGHPPHMNVNPQQA, corresponding to amino acid residues 2732-2750 of rat IP3R1
Isotype:	IgG
Characteristics:	Anti-IP3 Receptor-1 (ITPR1) Antibody (ABIN7043287, ABIN7043972 and ABIN7043973)) is a highly specific antibody directed against an epitope of the rat protein. The antibody can be used in western blot, immunohistochemistry, and immunocytochemistry applications. It has been designed to recognize IP3R1 from human, rat, and mouse samples.
Purification:	Affinity purified on immobilized antigen.

Target Details

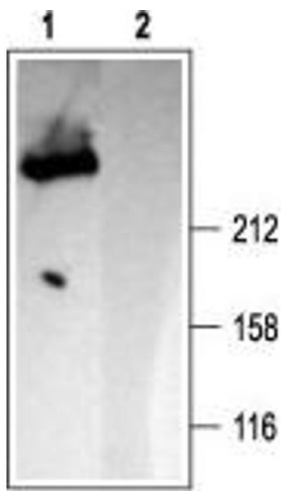
Target:	ITPR1
Alternative Name:	IP3 Receptor-1 (ITPR1) (ITPR1 Products)
Background:	Alternative names: IP3 Receptor-1 (ITPR1), Inositol 1,4,5-trisphosphate receptor type 1, IP3R1, InsP3R1
Gene ID:	25262
NCBI Accession:	NM_002222
UniProt:	P29994
Pathways:	Fc-epsilon Receptor Signaling Pathway , EGFR Signaling Pathway , Neurotrophin Signaling Pathway , Thyroid Hormone Synthesis , Myometrial Relaxation and Contraction , Synaptic Membrane , G-protein mediated Events , Interaction of EGFR with phospholipase C-gamma

Application Details

Application Notes:	Optimal working dilution should be determined by the investigator.
Restrictions:	For Research Use only

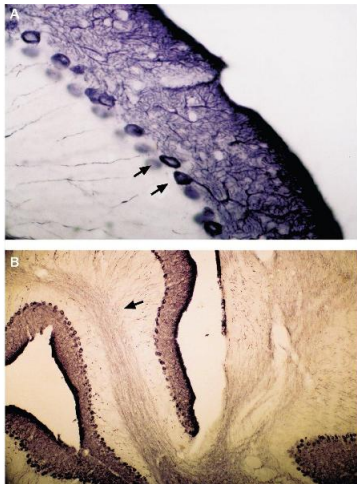
Handling

Format:	Lyophilized
Reconstitution:	25 µL, 50 µL or 0.2 mL double distilled water (DDW), depending on the sample size.
Concentration:	0.3 mg/mL
Buffer:	Reconstituted antibody contains phosphate buffered saline (PBS), pH 7.4, 1 % BSA, 0.05 % Sodium azide.
Preservative:	Sodium azide
Precaution of Use:	This product contains Sodium azide: a POISONOUS AND HAZARDOUS SUBSTANCE which should be handled by trained staff only.
Storage:	RT, 4 °C, -20 °C
Storage Comment:	Storage before reconstitution: The antibody ships as a lyophilized powder at room temperature. Upon arrival, it should be stored at -20°C. Storage after reconstitution: The reconstituted solution can be stored at 4°C for up to 1 week. For longer periods, small aliquots should be stored at -20°C. Avoid multiple freezing and thawing. Centrifuge all antibody preparations before use (10000 x g 5 min).



Western Blotting

Image 1. Western blot analysis of rat brain membranes: - 1. Anti-IP3 Receptor-1 (ITPR1) Antibody (ABIN7043287, ABIN7043972 and ABIN7043973), (1:2000). 2. Anti-IP3 Receptor-1 (ITPR1) Antibody, preincubated with IP3 Receptor-1/ITPR1 Blocking Peptide (#BLP-CC019).



Immunohistochemistry

Image 2. Expression of IP3R1 in mouse cerebellum - Immunohistochemical staining of mouse cerebellum with Anti-IP3 Receptor-1 (ITPR1) Antibody (ABIN7043287, ABIN7043972 and ABIN7043973). Immunoreactivity appears in Purkinje cells (arrows in A) and their dendritic trees. In addition, axonal processes coursing through cerebellar white matter are visualized (arrow in B).