

Datasheet for ABIN7043293

anti-KIDINS220 antibody (C-Term, Intracellular)**2** Images[Go to Product page](#)

Overview

Quantity:	25 µL
Target:	KIDINS220
Binding Specificity:	AA 1335-1348, C-Term, Intracellular
Reactivity:	Human, Rat, Mouse
Host:	Rabbit
Clonality:	Polyclonal
Conjugate:	This KIDINS220 antibody is un-conjugated
Application:	Western Blotting (WB), Immunohistochemistry (IHC), Immunofluorescence (IF)

Product Details

Immunogen:	Immunogen: Synthetic peptide Immunogen Sequence: (C)PRHSNLSWQSQTRR, corresponding to amino acid residues 1335-1348 of rat Kidins220
Isotype:	IgG
Characteristics:	Anti-Kidins220 Antibody (ABIN7043293, ABIN7045160 and ABIN7045161)) is a highly specific antibody directed against an epitope of the rat protein. The antibody can be used in western blot and immunohistochemistry applications. It has been designed to recognize Kidins220 from human, mouse, and rat samples.
Purification:	Affinity purified on immobilized antigen.

Target Details

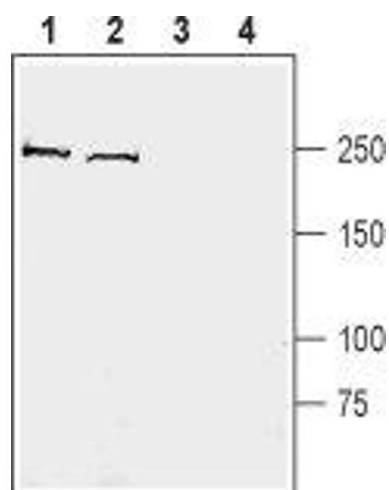
Target:	KIDINS220
Alternative Name:	Kidins220 (KIDINS220 Products)
Background:	Alternative names: Kidins220, Kinase D-interacting substrate of 220 kDa, Ankyrin repeat-rich membrane-spanning protein, ARMS
Gene ID:	116478
NCBI Accession:	NM_020738
UniProt:	Q9EQG6

Application Details

Application Notes:	Optimal working dilution should be determined by the investigator.
Restrictions:	For Research Use only

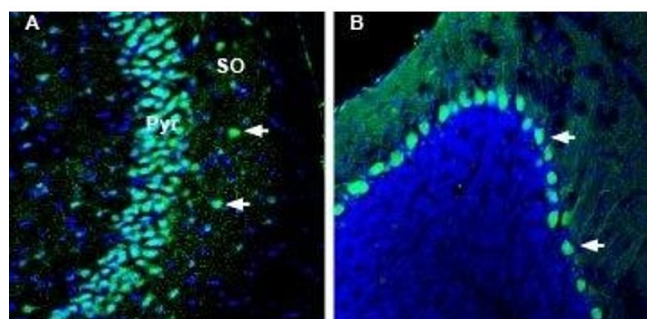
Handling

Format:	Lyophilized
Reconstitution:	25 µL, 50 µL or 0.2 mL double distilled water (DDW), depending on the sample size.
Concentration:	0.8 mg/mL
Buffer:	Reconstituted antibody contains phosphate buffered saline (PBS), pH 7.4, 1 % BSA, 0.05 % Sodium azide.
Preservative:	Sodium azide
Precaution of Use:	This product contains Sodium azide: a POISONOUS AND HAZARDOUS SUBSTANCE which should be handled by trained staff only.
Storage:	RT, 4 °C, -20 °C
Storage Comment:	<p>Storage before reconstitution: The antibody ships as a lyophilized powder at room temperature. Upon arrival, it should be stored at -20°C.</p> <p>Storage after reconstitution: The reconstituted solution can be stored at 4°C for up to 1 week. For longer periods, small aliquots should be stored at -20°C. Avoid multiple freezing and thawing. Centrifuge all antibody preparations before use (10000 x g 5 min).</p>



Western Blotting

Image 1. Western blot analysis of mouse brain membranes (lanes 1 and 3) and rat brain synaptosomal fraction (lanes 2 and 4): - 1,2. Anti-Kidins220 Antibody (ABIN7043293, ABIN7045160 and ABIN7045161), (1:200).3,4. Anti-Kidins220 Antibody, preincubated with Kidins220 Blocking Peptide (#BLP-PZ017).



Immunohistochemistry

Image 2. Expression of Kidins220 in mouse hippocampus and cerebellum - Immunohistochemical staining of perfusion-fixed frozen mouse brain sections with Anti-Kidins220 Antibody (ABIN7043293, ABIN7045160 and ABIN7045161), (1:1000), followed by goat-anti-rabbit-AlexaFluor-488. A. Kidins220 staining (green) in hippocampal sections is seen in neurons in the pyramidal layer (Pyr) and stratum oriens (OR) (arrows). B. Staining in cerebellum sections shows labeling (green) in neurons in the Purkinje cell layer (horizontal arrows). Cell nuclei are stained with DAPI (blue).