

Datasheet for ABIN7043298

## anti-LINGO1 antibody (Extracellular, N-Term)



[Go to Product page](#)

### 3 Images

#### Overview

Quantity:	25 µL
Target:	LINGO1
Binding Specificity:	AA 507-521, Extracellular, N-Term
Reactivity:	Human, Mouse, Rat
Host:	Rabbit
Clonality:	Polyclonal
Conjugate:	This LINGO1 antibody is un-conjugated
Application:	Western Blotting (WB), Immunohistochemistry (IHC), Immunofluorescence (IF)

#### Product Details

Immunogen:	Immunogen: Synthetic peptide Immunogen Sequence: (C)HVRSYSPDWPHQPNK, corresponding to amino acid residues 507-521 of mouse LINGO-1
Isotype:	IgG
Characteristics:	Anti-LINGO-1 (extracellular) Antibody is directed against an extracellular epitope of mouse LINGO-1. Anti-LINGO-1 (extracellular) Antibody (ABIN7043298, ABIN7044790 and ABIN7044791)) can be used in western blot and immunohistochemistry applications. The antibody recognizes an extracellular epitope, and is thus ideal for detecting the protein in living cells. It has been designed to recognize LINGO-1 from human, mouse, and rat samples.
Purification:	Affinity purified on immobilized antigen.

## Target Details

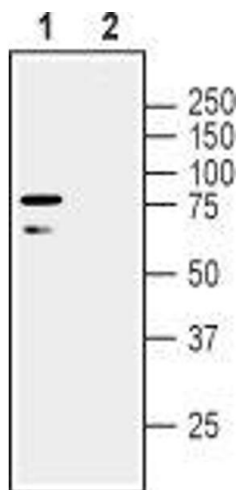
Target:	LINGO1
Alternative Name:	LINGO-1 ( <a href="#">LINGO1 Products</a> )
Background:	Alternative names: LINGO-1, Leucine-rich repeat and immunoglobulin-like domain-containing nogo receptor-interacting protein 1, Leucine-rich repeat neuronal protein 1, Leucine-rich repeat neuronal protein 6A, LRRN6A, LERN1
Gene ID:	235402
NCBI Accession:	<a href="#">NM_032808</a>
UniProt:	<a href="#">Q9D1T0</a>

## Application Details

Application Notes:	Optimal working dilution should be determined by the investigator.
Restrictions:	For Research Use only

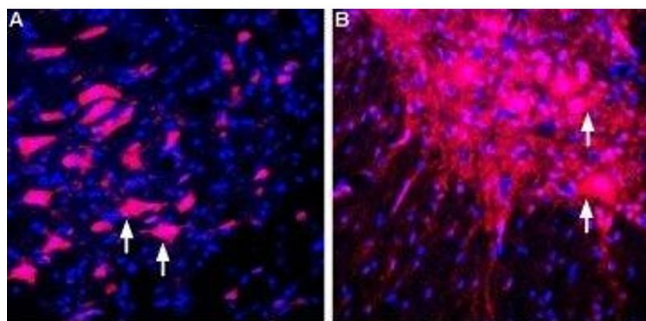
## Handling

Format:	Lyophilized
Reconstitution:	25 µL, 50 µL or 0.2 mL double distilled water (DDW), depending on the sample size.
Concentration:	0.8 mg/mL
Buffer:	Reconstituted antibody contains phosphate buffered saline (PBS), pH 7.4, 1 % BSA, 0.05 % Sodium azide.
Preservative:	Sodium azide
Precaution of Use:	This product contains Sodium azide: a POISONOUS AND HAZARDOUS SUBSTANCE which should be handled by trained staff only.
Storage:	RT, 4 °C, -20 °C
Storage Comment:	<p>Storage before reconstitution: The antibody ships as a lyophilized powder at room temperature. Upon arrival, it should be stored at -20°C.</p> <p>Storage after reconstitution: The reconstituted solution can be stored at 4°C for up to 1 week. For longer periods, small aliquots should be stored at -20°C. Avoid multiple freezing and thawing. Centrifuge all antibody preparations before use (10000 x g 5 min).</p>



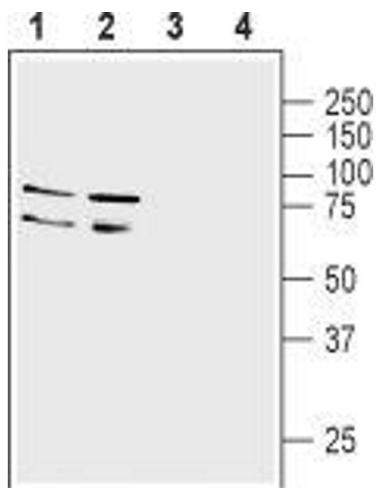
#### Western Blotting

**Image 1.** Western blot analysis of human SH-SY5Y neuroblastoma cell line lysate: - 1. Anti-LINGO-1 (extracellular) Antibody (ABIN7043298, ABIN7044790 and ABIN7044791), (1:500).2. Anti-LINGO-1 (extracellular) Antibody, preincubated with LINGO-1 (extracellular) Blocking Peptide (#BLP-NT032).



#### Immunohistochemistry

**Image 2.** Expression of LINGO-1 in rat brain and spinal cord - Immunohistochemical staining of perfusion-fixed frozen rat brain sections using Anti-LINGO-1 (extracellular) Antibody (ABIN7043298, ABIN7044790 and ABIN7044791), (1:400), followed by donkey-anti-rabbit-Cy3. A. LINGO-1 staining (red) is detected in sections of rat substantia nigra, in nigral neurons (arrows). B. Staining of rat spinal cord shows LINGO-1 labeling in ventral horn neurons (arrows). Cell nuclei are stained with DAPI (blue).



#### Western Blotting

**Image 3.** Western blot analysis of rat (lanes 1 and 3) and mouse (lanes 2 and 4) brain membranes: - 1,2. Anti-LINGO-1 (extracellular) Antibody (ABIN7043298, ABIN7044790 and ABIN7044791), (1:200).3,4. Anti-LINGO-1 (extracellular) Antibody, preincubated with LINGO-1 (extracellular) Blocking Peptide (#BLP-NT032).