

Datasheet for ABIN7043299

anti-LRRC26 antibody (C-Term, Intracellular)[Go to Product page](#)**2** Images

Overview

Quantity:	25 µL
Target:	LRRC26
Binding Specificity:	AA 301-314, C-Term, Intracellular
Reactivity:	Mouse, Rat
Host:	Rabbit
Clonality:	Polyclonal
Conjugate:	This LRRC26 antibody is un-conjugated
Application:	Western Blotting (WB)

Product Details

Immunogen:	Immunogen: Synthetic peptide
	Immunogen Sequence: (C)RRTTVRHLIRRQPD, corresponding to amino acid residues 301-314 of rat LRRC26
Isotype:	IgG
Cross-Reactivity (Details):	Won't recognize human LRRC26.
Characteristics:	Anti-LRRC26 Antibody (ABIN7043299, ABIN7044982 and ABIN7044983)) is a highly specific antibody directed against an epitope of the rat protein. The antibody can be used in western blot analysis. It has been designed to recognize LRRC26 from rat and mouse samples. It does not recognize the protein from human samples.
Purification:	Affinity purified on immobilized antigen.

Target Details

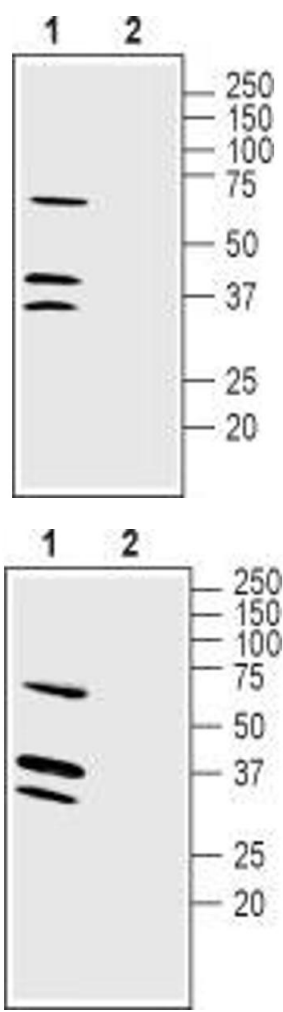
Target:	LRRC26
Alternative Name:	LRRC26 (LRRC26 Products)
Background:	Alternative names: LRRC26, Leucine-rich repeat-containing protein 26, BK channel auxiliary gamma subunit LRRC26, Cytokeratin-associated protein in cancer, CAPC
Gene ID:	311803
NCBI Accession:	NM_001013653
UniProt:	Q6P7C4

Application Details

Application Notes:	Optimal working dilution should be determined by the investigator.
Restrictions:	For Research Use only

Handling

Format:	Lyophilized
Reconstitution:	25 µL, 50 µL or 0.2 mL double distilled water (DDW), depending on the sample size.
Concentration:	0.8 mg/mL
Buffer:	Reconstituted antibody contains phosphate buffered saline (PBS), pH 7.4, 1 % BSA, 0.05 % Sodium azide.
Preservative:	Sodium azide
Precaution of Use:	This product contains Sodium azide: a POISONOUS AND HAZARDOUS SUBSTANCE which should be handled by trained staff only.
Storage:	RT, 4 °C, -20 °C
Storage Comment:	<p>Storage before reconstitution: The antibody ships as a lyophilized powder at room temperature. Upon arrival, it should be stored at -20°C.</p> <p>Storage after reconstitution: The reconstituted solution can be stored at 4°C for up to 1 week. For longer periods, small aliquots should be stored at -20°C. Avoid multiple freezing and thawing. Centrifuge all antibody preparations before use (10000 x g 5 min).</p>



Western Blotting

Image 1. Western blot analysis of rat brain membranes: - 1. Anti-LRRC26 Antibody (ABIN7043299, ABIN7044982 and ABIN7044983), (1:200). 2. Anti-LRRC26 Antibody, preincubated with LRRC26 Blocking Peptide (#BLP-PC070).

Western Blotting

Image 2. Western blot analysis of mouse brain membranes: - 1. Anti-LRRC26 Antibody (ABIN7043299, ABIN7044982 and ABIN7044983), (1:400). 2. Anti-LRRC26 Antibody, preincubated with LRRC26 Blocking Peptide (#BLP-PC070).