

Datasheet for ABIN7043300

**anti-LRRC4B antibody (Extracellular, N-Term)****3** Images[Go to Product page](#)

## Overview

Quantity:	50 µL
Target:	LRRC4B
Binding Specificity:	AA 498-511, Extracellular, N-Term
Reactivity:	Mouse, Rat
Host:	Rabbit
Clonality:	Polyclonal
Conjugate:	This LRRC4B antibody is un-conjugated
Application:	Western Blotting (WB), Immunohistochemistry (IHC), Immunofluorescence (IF)

## Product Details

Immunogen:	Immunogen: Synthetic peptide
	Immunogen Sequence: (C)PGEEAQQPRGTEKE, corresponding to amino acid residues 498-511 of mouse NGL-3
Isotype:	IgG
Characteristics:	Anti-NGL-3/LRRC4B (extracellular) Antibody (ABIN7043300, ABIN7044736 and ABIN7044737)) is a highly specific antibody directed against an epitope of the mouse protein. The antibody can be used in western blot and immunohistochemistry applications. It recognizes an extracellular epitope and can potentially detect the protein in living cells. It has been designed to recognize LRRC4B from rat, mouse, and human samples.
Purification:	Affinity purified on immobilized antigen.

## Target Details

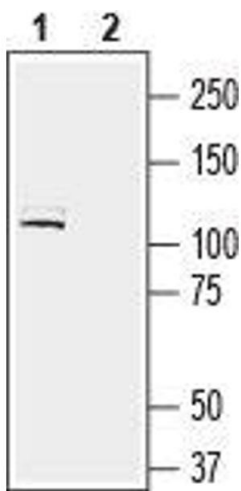
Target:	LRRC4B
Alternative Name:	NGL-3/LRRC4B ( <a href="#">LRRC4B Products</a> )
Background:	Alternative names: NGL-3/LRRC4B, Netrin-G ligand 3, Netrin-G3 ligand, Leucine-rich repeat-containing protein 4B, LRIG4
Gene ID:	272381
NCBI Accession:	<a href="#">NM_001080457</a>
UniProt:	<a href="#">P0C192</a>
Pathways:	<a href="#">Synaptic Membrane</a>

## Application Details

Application Notes:	Optimal working dilution should be determined by the investigator.
Restrictions:	For Research Use only

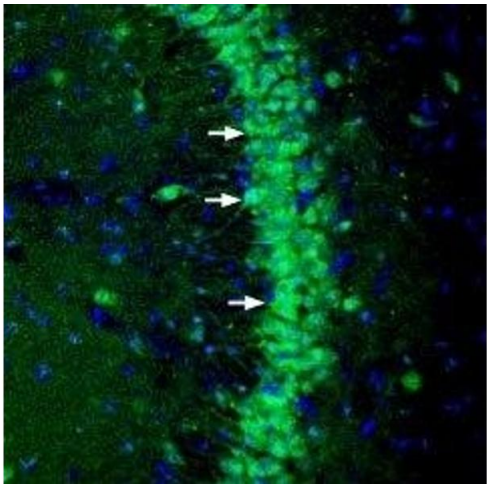
## Handling

Format:	Lyophilized
Reconstitution:	25 µL, 50 µL or 0.2 mL double distilled water (DDW), depending on the sample size.
Concentration:	0.8 mg/mL
Buffer:	Reconstituted antibody contains phosphate buffered saline (PBS), pH 7.4, 1 % BSA, 0.05 % Sodium azide.
Preservative:	Sodium azide
Precaution of Use:	This product contains Sodium azide: a POISONOUS AND HAZARDOUS SUBSTANCE which should be handled by trained staff only.
Storage:	RT, 4 °C, -20 °C
Storage Comment:	<p>Storage before reconstitution: The antibody ships as a lyophilized powder at room temperature. Upon arrival, it should be stored at -20°C.</p> <p>Storage after reconstitution: The reconstituted solution can be stored at 4°C for up to 1 week. For longer periods, small aliquots should be stored at -20°C. Avoid multiple freezing and thawing. Centrifuge all antibody preparations before use (10000 x g 5 min).</p>



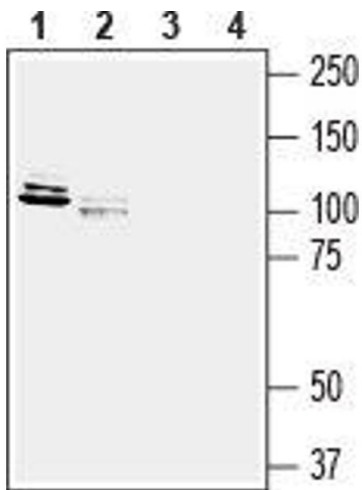
#### Western Blotting

**Image 1.** Western blot analysis of mouse brain lysate: - 1. Anti-NGL-3/LRRC4B (extracellular) Antibody (ABIN7043300, ABIN7044736 and ABIN7044737), (1:200). 2. Anti-NGL-3/LRRC4B (extracellular) Antibody, preincubated with NGL-3/LRRC4B (extracellular) Blocking Peptide (#BLP-NR163).



#### Immunohistochemistry

**Image 2.** Expression of NGL-3 in mouse hippocampus - Immunohistochemical staining of perfusion-fixed frozen mouse brain sections with Anti-NGL-3/LRRC4B (extracellular) Antibody (ABIN7043300, ABIN7044736 and ABIN7044737), (1:200), followed by goat anti-rabbit-AlexaFluor-488. NGL-3 immunoreactivity (green) is detected in the pyramidal layer (arrows). Cell nuclei are stained with DAPI (blue).



#### Western Blotting

**Image 3.** Western blot analysis of rat new born brain membranes (lanes 1 and 3) and rat brain lysate (lanes 2 and 4): - 1,2. Anti-NGL-3/LRRC4B (extracellular) Antibody (ABIN7043300, ABIN7044736 and ABIN7044737), (1:200). 3,4. Anti-NGL-3/LRRC4B (extracellular) Antibody, preincubated with NGL-3/LRRC4B (extracellular) Blocking Peptide (#BLP-NR163).