



Datasheet for ABIN7043301

anti-LRRC8A antibody (1st Extracellular Loop)



[Go to Product page](#)

4 Images

Overview

Quantity:	50 µL
Target:	LRRC8A
Binding Specificity:	1st Extracellular Loop, AA 91-104
Reactivity:	Human, Mouse, Rat
Host:	Rabbit
Clonality:	Polyclonal
Conjugate:	This LRRC8A antibody is un-conjugated
Application:	Western Blotting (WB), Immunohistochemistry (IHC), Flow Cytometry (FACS), Immunofluorescence (IF)

Product Details

Immunogen:	Immunogen: Synthetic peptide Immunogen Sequence: (C)DTGPTGIKYDLDRH, corresponding to amino acid residues 91-104 of human LRRC8A
Isotype:	IgG
Characteristics:	Anti-LRRC8A (extracellular) Antibody (ABIN7043301, ABIN7043886 and ABIN7043887)) is a highly specific antibody directed against an epitope of the human protein. The antibody can be used in western blot and immunohistochemistry applications. It recognizes an extracellular epitope and can potentially be used for detecting the protein in living cells. It has been designed to recognize SWELL1 from rat, mouse, and human samples.
Purification:	Affinity purified on immobilized antigen.

Target Details

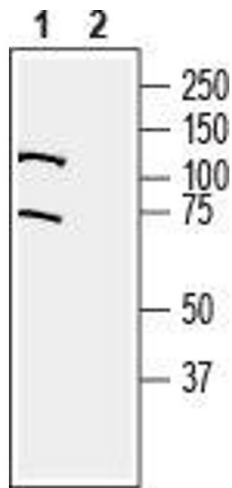
Target:	LRRRC8A
Alternative Name:	LRRRC8A (LRRRC8A Products)
Background:	Alternative names: LRRRC8A, Leucine-rich repeat-containing protein 8A, Volume-regulated anion channel subunit LRRRC8A, LRRRC8, Swelling protein 1, SWELL1
Gene ID:	56262
NCBI Accession:	NM_019594
UniProt:	Q8IWT6

Application Details

Application Notes:	Optimal working dilution should be determined by the investigator.
Restrictions:	For Research Use only

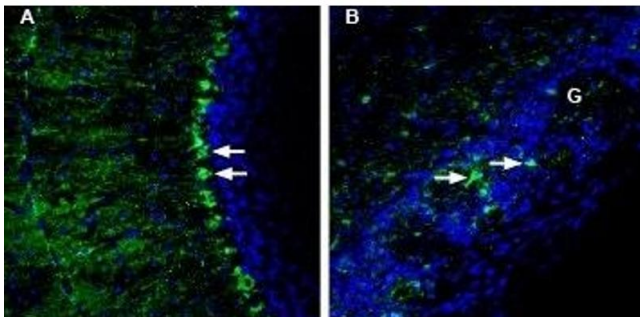
Handling

Format:	Lyophilized
Reconstitution:	25 µL, 50 µL or 0.2 mL double distilled water (DDW), depending on the sample size.
Concentration:	0.8 mg/mL
Buffer:	Reconstituted antibody contains phosphate buffered saline (PBS), pH 7.4, 1 % BSA, 0.05 % Sodium azide.
Preservative:	Sodium azide
Precaution of Use:	This product contains Sodium azide: a POISONOUS AND HAZARDOUS SUBSTANCE which should be handled by trained staff only.
Storage:	RT, 4 °C, -20 °C
Storage Comment:	Storage before reconstitution: The antibody ships as a lyophilized powder at room temperature. Upon arrival, it should be stored at -20°C. Storage after reconstitution: The reconstituted solution can be stored at 4°C for up to 1 week. For longer periods, small aliquots should be stored at -20°C. Avoid multiple freezing and thawing. Centrifuge all antibody preparations before use (10000 x g 5 min).



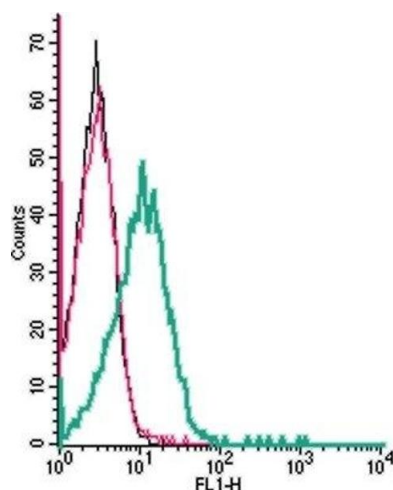
Western Blotting

Image 1. Western blot analysis of rat lung membranes: - 1. Anti-LRRC8A (extracellular) Antibody (ABIN7043301, ABIN7043886 and ABIN7043887), (1:200). 2. Anti-LRRC8A (extracellular) Antibody, preincubated with LRRC8A (extracellular) Blocking Peptide (#BLP-AC001).



Immunohistochemistry

Image 2. Expression of LRRC8A in mouse cerebellum and olfactory bulb - Immunohistochemical staining of perfusion-fixed frozen mouse brain sections with Anti-LRRC8A (extracellular) Antibody (ABIN7043301, ABIN7043886 and ABIN7043887), (1:200), followed by goat-anti-rabbit-AlexaFluor-488. A. LRRC8A staining in mouse cerebellum (green) shows intensely positive cells (arrows) with Bergmann glia morphology and localization. B. Staining in mouse olfactory bulb shows intensely positive cells (arrows) with glial morphology in some glomeruli (G). Cell nuclei are stained with DAPI (blue).



Flow Cytometry

Image 3. Cell surface detection of LRRC8A by indirect flow cytometry in live intact human Jurkat T-cell leukemia cells: (black line) Cells. (red line) Cells + goat-anti-rabbit-FITC. (green line) Cells + Anti-LRRC8A (extracellular) Antibody (ABIN7043301, ABIN7043886 and ABIN7043887), (5 µg) + goat-anti-rabbit-FITC.

Please check the [product details page](#) for more images. Overall 4 images are available for ABIN7043301.