

Datasheet for ABIN7043302

**anti-LRRTM1 antibody (Extracellular, N-Term)**[Go to Product page](#)**2** Images

## Overview

Quantity:	50 µL
Target:	LRRTM1
Binding Specificity:	AA 334-346, Extracellular, N-Term
Reactivity:	Mouse, Rat
Host:	Rabbit
Clonality:	Polyclonal
Conjugate:	This LRRTM1 antibody is un-conjugated
Application:	Western Blotting (WB), Immunohistochemistry (IHC), Immunofluorescence (IF)

## Product Details

Immunogen:	Immunogen: Synthetic peptide Immunogen Sequence: (C)GRYDANLQ(S)ASPE, corresponding to amino acid residues 334-346 of mouse LRRTM1
Isotype:	IgG
Characteristics:	Anti-LRRTM1 (extracellular) Antibody (ABIN7043302, ABIN7044730 and ABIN7044731)) is a highly specific antibody directed against an epitope of the mouse protein. The antibody can be used in western blot and immunohistochemistry applications. It recognizes an extracellular epitope and can potentially detect the protein in living cells. It has been designed to recognize LRRTM1 from human, rat, and mouse samples.
Purification:	Affinity purified on immobilized antigen.

## Target Details

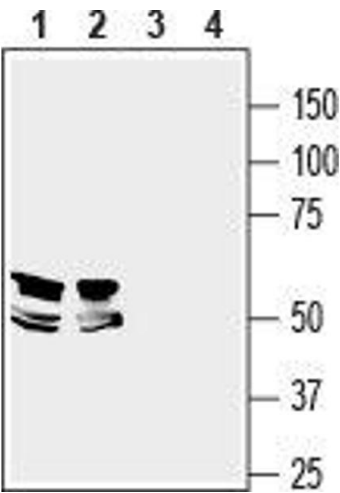
Target:	LRRTM1
Alternative Name:	LRRTM1 ( <a href="#">LRRTM1 Products</a> )
Background:	Alternative names: LRRTM1, Leucine-rich repeat transmembrane neuronal protein 1
Gene ID:	74342
NCBI Accession:	<a href="#">NM_178839</a>
UniProt:	<a href="#">Q8K377</a>
Pathways:	<a href="#">Synaptic Membrane</a>

## Application Details

Application Notes:	Optimal working dilution should be determined by the investigator.
Restrictions:	For Research Use only

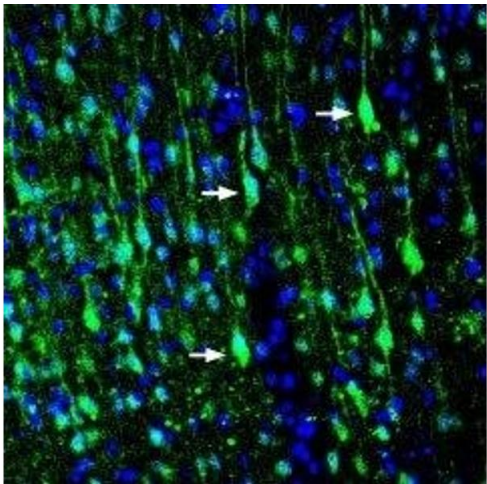
## Handling

Format:	Lyophilized
Reconstitution:	25 µL, 50 µL or 0.2 mL double distilled water (DDW), depending on the sample size.
Concentration:	0.8 mg/mL
Buffer:	Reconstituted antibody contains phosphate buffered saline (PBS), pH 7.4, 1 % BSA, 0.05 % Sodium azide.
Preservative:	Sodium azide
Precaution of Use:	This product contains Sodium azide: a POISONOUS AND HAZARDOUS SUBSTANCE which should be handled by trained staff only.
Storage:	RT, 4 °C, -20 °C
Storage Comment:	<p>Storage before reconstitution: The antibody ships as a lyophilized powder at room temperature. Upon arrival, it should be stored at -20°C.</p> <p>Storage after reconstitution: The reconstituted solution can be stored at 4°C for up to 1 week. For longer periods, small aliquots should be stored at -20°C. Avoid multiple freezing and thawing. Centrifuge all antibody preparations before use (10000 x g 5 min).</p>



#### Western Blotting

**Image 1.** Western blot analysis of mouse brain (lanes 1 and 3) and rat hippocampus (lanes 2 and 4) lysates: - 1,2. Anti-LRRTM1 (extracellular) Antibody (ABIN7043302, ABIN7044730 and ABIN7044731), (1:400).3,4. Anti-LRRTM1 (extracellular) Antibody, preincubated with LRRTM1 (extracellular) Blocking Peptide (#BLP-NR141).



#### Immunohistochemistry

**Image 2.** Expression of LRRTM1 in rat cortex - Immunohistochemical staining of perfusion-fixed frozen rat brain sections with Anti-LRRTM1 (extracellular) Antibody (ABIN7043302, ABIN7044730 and ABIN7044731), (1:200), followed by goat-anti-rabbit-AlexaFluor-488. LRRTM1 staining (green) in rat temporal cortex is detected in neuronal profiles (arrows). Cell nuclei are stained with DAPI (blue).